

European Solar and Energy Storage Solutions

Yingli Photovoltaic Solar Panels



Overview

Who is Yingli Energy Technology Group?

Yingli Energy Technology Group is one of the world's leading providers of BIPV products and integrated photovoltaic solutions, which aims to provide clean energy for all and built a Zero-carbon world.

Are Yingli solar panels a good choice?

Yingli Solar has modules that range from 315 - 450 watt solar panels, which is a solid range to choose from. Either one of Yingli's residential solar panels will provide enough power to keep your home's electricity running. A solar panel's efficiency rating represents the amount of energy absorbed that will be turned into electricity.

Who manufactures Yingli solar panels?

Yingli is one of the world's largest solar panel manufacturers (NYSE:YGE), and at its peak has been the largest panel supplier. The company produces over 4 GW of solar panels every year. It has grown rapidly over the years and has shipped more than 24 GW of panels to over 100 countries.

What is Yingli Green Energy?

Yingli Green Energy is a module manufacturing company founded in Baoding, China, in 1998. It is one of the world's largest solar panel manufacturers and has been the largest panel supplier at its peak. Yingli Green Energy is a publicly-traded company (NYSE:YGE) and has shipped more than 24 GW of panels to over 100 countries.

What are Yingli bifacial solar modules?

Yingli's premium, bifacial modules are named Panda. Their most important feature is the N-type solar cells. Unlike regular, P-type modules, N-type modules experience lower losses due to Light Induced Degradation (LID). In other words, the N-type modules have even better energy output, especially

in the mornings and evenings.

What is Yingli Solar power rating?

The positive power rating for Yingli solar panels is listed at 0/+5 W, meaning that the panels will not produce less than their power rating but they might produce as much as 5 W more than their highest rated wattage. What is the Yingli Solar warranty?

Yingli Photovoltaic Solar Panels



Solar panel efficiency explained: most efficient solar panels 2024

High-efficiency solar panels can add about \$2,000 to the cost of a solar installation. Solar panel efficiency is impacted by the solar cells used, how the panels are installed, and local climate ...

Yingli releases 435 W n-type TOPCon solar panel with ...

Yingli is offering six versions of its 108-cell Panda 3.0 PRO modules, with power outputs ranging from 410 W to 435 W and efficiencies ranging from 21.0% to 22.28%. Yingli Solar has unveiled



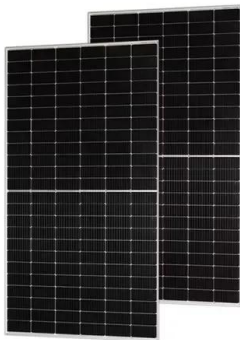
Yingli Energy Technology Group-Yingli Energy Technology Group

Yingli Energy Technology Group is one of the world's leading providers of BIPV products and integrated photovoltaic solutions, which aims to provide clean energy for all and built a Zero ...

Yingli Energy Technology Group-Yingli Energy ...

Integrated photovoltaic solutions. Yingli Energy

Technology Group is one of the world's leading providers of BIPV products and integrated photovoltaic solutions, which aims to provide clean energy for all and built a Zero-carbon world.



Yingli Solar YL250P-29b Solar Panel Wholesale Discount

Yingli YL250P-29b Solar Module. Part of the YGE 60 Cell Series, the YL250P-29b features high efficiency, polycrystalline solar cells with high-transmission textured glass delivering a module series efficiency of up to 15.3%, ...

Yingli 400W Solar Panel 108 Cell All Black YL400D-37e-1/2

...

Solar PV panels29 Articles. Batteries11 Articles. Solar inverters9 Articles. Charge controllers6 Articles. PV system design20 Articles. A substantial 12-year product warranty is ...



Yingli Solar Panel 2024 Review

As of January 2022, Yingli Solar offers three types of monocrystalline solar modules on their website, but only two of them are built for use on residential homes. Let's review the cost of Yingli panels and compare the warranty they ...

Yingli Solar Panels: An independent review by Solar ...

Yingli's latest solar panel to drop in Australia in early 2024 is the Panda 3.0 Pro. This is a 440W bifacial solar panel which utilises N-type monocrystalline cell technology. The panel dimensions are 1.76m by 1.13m ...



Contact Us

For catalog requests, pricing, or partnerships, please visit:
<https://www.ssab-proiect.eu>