

European Solar and Energy Storage Solutions

Will photovoltaic panel installation affect snowfall



Overview

Solar panels continue to work well in the winter as long as they don't stay covered in snow. Snow will naturally melt off of panels or slide off over time as they are installed at an angle.

Solar panels continue to work well in the winter as long as they don't stay covered in snow. Snow will naturally melt off of panels or slide off over time as they are installed at an angle.

Heavy snowfall can completely cover solar panels, leading to significant reductions in energy output. Properly designed and installed solar panel systems can withstand heavy snowfall.

Solar panels are designed to withstand various weather conditions, including snow loads, but heavy snowfall can exert additional stress on the panels and their mounting systems.

Most snow will melt quickly off PV systems or be blown off by wind. Heavier snow or extreme winter weather, however, pose a greater risk to the resilience and longevity of PV installations.

Solar panels are designed to work throughout all four seasons, including in snowy conditions. However, the amount and type of snow can impact their efficiency. How does snow affect solar panels?

A dusting of snow has little impact on solar panels because the wind can easily blow it off. Light is able to forward scatter through a sparse coating, reaching the panel to produce electricity. It's a different story when heavy snow accumulates, which prevents PV panels from generating power.

Do solar panels remove snow?

Yes, automatic solar panel snow removal devices such as heated panels are available. These systems reduce the need for manual labor and lower the risk of damaging your solar panels. How does the angle of solar panel installation affect snow accumulation?

Can solar panels generate solar energy if it is covered in snow?

Solar panels cannot generate solar energy if they are covered in snow. The good news is that you can eliminate this issue by either waiting for gravity to do its job and having the snow fall off or waiting for it to melt. Another option is cleaning them off yourself.

How does snow affect PV panels?

Light is able to forward scatter through a sparse coating, reaching the panel to produce electricity. It's a different story when heavy snow accumulates, which prevents PV panels from generating power. Once the snow starts to slide, though, even if it only slightly exposes the panel, power generation is able to occur again.

Does snow affect solar photovoltaic system performance?

Solar photovoltaic (PV) systems are frequently installed in climates with significant snowfall. To better understand the effects of snowfall on the performance of PV systems, a multi-angle, multi-technology PV system was commissioned and monitored over two winters.

Can solar panels withstand heavy snow?

Don't Ignore Heavy Snow: Do not let heavy snow accumulate on your solar panels for too long, as it can significantly reduce efficiency and potentially cause damage. Your solar panels rely on photovoltaic (PV) cells, located in the front layers, to capture sunlight and convert it into electricity.

Will photovoltaic panel installation affect snowfall



Solar Photovoltaic Hardening for Resilience - Winter ...

Most snow will melt quickly off PV systems or be blown off by wind. Heavier snow or extreme winter weather, however, pose a greater risk to the resilience and longevity of PV installations. During severe snowstorms, the weight of ...

Snow on Solar Panels: What You Need To Do - Forbes ...

Because heat can actually cause the photovoltaic cells that make up the panels to perform suboptimally, colder temperatures (especially colder temperatures without snowfall) are ideal for

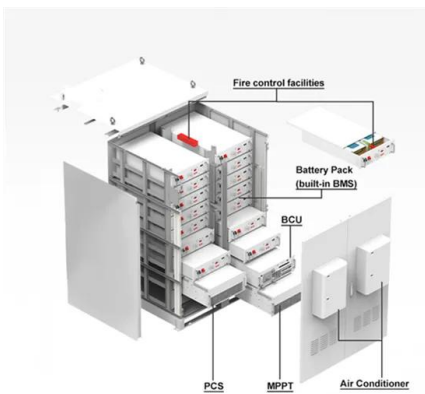


Do You Need To Install Snow Guards for Solar Panels?

Keep an eye on the snow buildup. When possible, brush off excess snow to expose the panels to more sunlight. Install tilted panels or adjust the angle of your existing panels. This allows snow to slide off more easily, ...

7 New Solar Panel Technologies Shaping the Future of ...

Recent advancements in bifacial solar panel technology have contributed to their growing market share in the renewable energy sector. The global bifacial solar panel market has witnessed notable growth due to factors ...

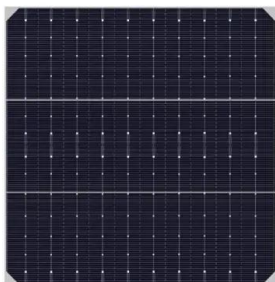


How PV panel tilt affects solar plant performance -- ...

Solar panel backtracking uses a motor and tracking control program that adjusts the tilt of the panels as the sun moves across the sky throughout the day and the year. This maximizes the direct sunlight that ...

How Weather Affects Solar Panel Efficiency and Output

This guide delves into how different weather conditions affect solar panel efficiency and offers insights into maximizing your solar investment regardless of the climate. In regions where ...



How to Keep Your Solar Panels Running During Winter Weather

Installing solar panels can be a move toward long-term energy savings for a lot of people. Though inflation is cooling, energy costs have increased for a lot of people over the past two years

Snow on solar panels: will solar panels work in the ...

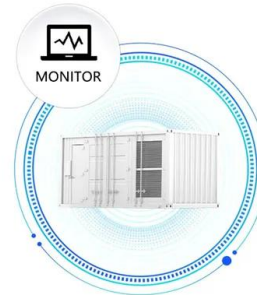
Solar panels cannot generate solar energy if they are covered in snow. The good news is that you can eliminate this issue by either waiting for gravity to do its job and having the snow fall off or waiting for it to melt. Another option is cleaning ...



Snow on solar panels: will solar panels work in the winter?

Key takeaways. Solar panels work well in cold weather. While it is true that they do not work if there is snow on top of them, the snow usually slides off or melts pretty quickly.. Living ...

SUPPORT REAL-TIME ONLINE
MONITORING OF SYSTEM STATUS



Do Solar Panels Work in Winter? What You Need to ...

Allowing snow to collect on the surface of PV panels can have this masking effect. A light snowfall typically won't affect your solar panels, especially if they're positioned at an angle where the snow can slide off. ...



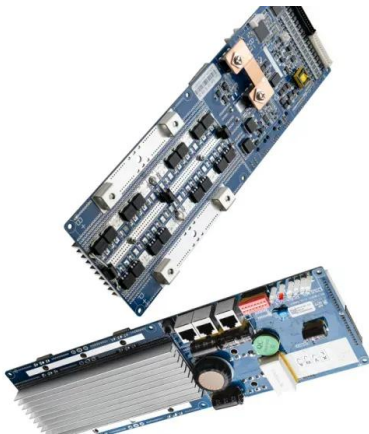
A Full Guide to Photovoltaic Panel Installation and ...

Regular maintenance tasks for photovoltaic panels include cleaning the panels to remove dust, debris or snow, inspecting the mounting system, checking the wiring and connections, monitoring energy production, ...



A Bifacial Solar Panel Installation Guide

Ground-mounted bifacial solar installations: Bifacial panels are well-suited for ground-mounted solar systems as they can capture sunlight reflected from the ground, increasing energy production. These systems allow ...



How Does Snow Affect Solar Panels and What Can You Do About it?

How Does Snow Effect Your Energy Output? A light dusting of snow will not affect your panels' ability to collect energy. If the snow is thick, then it will block the sun. But you have to remember that the goal of your system is ...

Let it Snow: How Solar Panels Can Thrive in Winter ...

A dusting of snow has little impact on solar panels because the wind can easily blow it off. Light is able to forward scatter through a sparse coating, reaching the panel to produce electricity. It's a different story when ...



Contact Us

For catalog requests, pricing, or partnerships, please visit:
<https://www.ssab-proiect.eu>