

European Solar and Energy Storage Solutions

What kind of glue should be used to glue photovoltaic panels



Overview

When reinstalling them, use silicon glue or adhesive tape to hold everything in place. If there is already some edge protection around the glass enclosure, silicon glue should be enough. Can you use adhesive on solar panels?

I strongly urge you to avoid using any adhesive for solar panels. Keep in mind that flexible solar panels don't last long. You will probably need to replace them every couple of years. That will be a challenge with them glued in place. For rigid panels, the best adhesive would be M6 bolts.

What is a solar adhesive?

An adhesive is a substance that unites or bonds surfaces together. In the solar industry, adhesives are used throughout the process of manufacturing and installation. Henkel's adhesive Loctite 3388P enables high-strength ingot bonding in solar applications.

Are solar adhesives weather resistant?

Weather resistance is a primary concern with the adhesives used to install solar panels, so solar manufacturers and installers should investigate how long the adhesives are going to last in the harsh conditions of a typical solar installation. An introduction to solar adhesives from our 2012 Renewable Energy Handbook.

Do thin film solar panels need adhesive?

Thin-film solar panels (see page 296), in particular, need adhesives around the edges because they typically don't have frames to protect them. They need an additional moisture barrier called a side or edge seal. Many manufacturers use butyl, either in a liquid or tape form. Butyl-casting resins provide water vapor-tight sealing.

How much adhesive do I need for a solar panel bracket?

If you're using adhesive you want as much surface area connection between

the bracket and the roof. A couple inches of bracket may not be enough. Using adhesive under Unistrut that matches the full length of the solar panels is much better. But I'm a lot more comfortable with actual fasteners.

What is the best adhesive for rigid panels?

For rigid panels, the best adhesive would be M6 bolts. These are rigid panels being mounted on aluminium brackets. I'll actually be replacing one of the factory panels and notice they only use adhesive. M6 bolts make sense for strength, my concern is they introduce an entry point for moisture.

What kind of glue should be used to glue photovoltaic panels



What is the best board to install behind a glue up tub surround?

Most use standard drywall. If you feel better using dens shield or another WP drywall that would be fine tub surround adhesive must be used to avoid discoloring bleed through on the ...

A DIYer's Guide Glue and Adhesives , The Family ...

It's used for bonding subfloors to joists, wall panels to studs and much more. It comes in a tube that fits in a caulk gun. It may contain acrylic resin, polyurethane monomers, styrene-butadene rubber or a combination of ...



Best Glue for Vinyl - Evaluating the Best Adhesives ...

It works just as well on vinyl planks for panels and comes in a convenient squeeze bottle which makes it easy to apply. After gluing your surface will be ready for traffic in less than an hour. Because vinyl is such a ...



What adhesive should I use to glue rigid polystyrene ...

What kind of glue should I use for insulation to

wood? 3. Should I remove old wood glue before reinstalling a board on a table, and how? 0. Which glue/grab adhesive type to use with OSB 3 boards and joists for shed + ...



 LFP 12V 200Ah

How to Seal Solar Panels (Must Know!)

When reinstalling them, use silicon glue or adhesive tape to hold everything in place. If there is already some edge protection around the glass enclosure, silicon glue should be enough. If you did not protect the glass ...

How To Choose And Use Solar Panel Junction Box?

It provides users with a combination connection scheme of solar panels. As a kind of solar panel connector, the main function of the solar photovoltaic junction box is to export the power generated by the solar cell ...



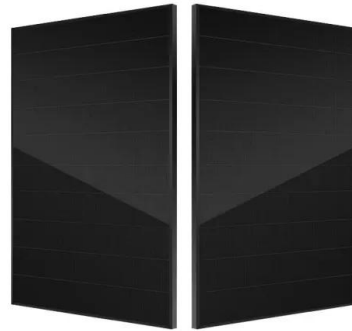
The Ultimate Guide to Choosing the Best Glue for Wall ...

To give you a general idea, we've compiled a table below regarding the drying time for some of the common types of glue used for wall panels: Type of Glue Drying Time; Liquid Nails: 24 hours; Epoxy: 24-48 hours; Contact Cement: 15 ...

How to Install Glue Up Shower Walls: A Step-by-Step Guide

Cut Your Panels: Use a circular saw to make straight cuts and a jigsaw for curved cuts. Make sure to cut along the pencil marks precisely to ensure a tight fit. Cut each panel one at a time,

...



Exploring Solar Panel Adhesive Tape

The best adhesive for solar panels depends on various factors, such as the type of surface, environmental conditions, and specific requirements of the solar panel manufacturer. Very High Bond (VHB) tape is commonly used and highly ...

How to Glue Body Repair Panels: A Comprehensive Guide

When it comes to auto body repair, there are several types of glue that can be used to bond body panels. Choosing the right glue is crucial to ensure that the bond is strong and durable. Here

...



Contact Us

For catalog requests, pricing, or partnerships, please visit:
<https://www.ssab-proiect.eu>