

## European Solar and Energy Storage Solutions

# What is the photovoltaic panel backplane line



## Overview

---

The photovoltaic backplane of a solar module, also known as the backsheet, plays a crucial role in the overall performance, durability, and safety of the module. While it might seem like a relatively small component, the backsheet serves several important functions:.

The photovoltaic backplane of a solar module, also known as the backsheet, plays a crucial role in the overall performance, durability, and safety of the module. While it might seem like a relatively small component, the backsheet serves several important functions:.

A crucial component within photovoltaic systems, the solar backplane serves multiple purposes. Its primary function is to provide structural stability and physical protection to solar cells from environmental influences like moisture, UV light, and mechanical stress.

The photovoltaic backplane can make the solar panel work normally for a long time in the harsh environment, and its most basic functions include insulation, water resistance, and weather resistance. Photovoltaic backsheets are divided into organic polymer film backsheets and glass backsheets according to their materials.

The energy output of a PV panel changes based on the angle between the panel and the sun. The angle at which the sun hits a PV panel determines its efficiency and is what engineers use in the design of an efficient PV array for a specific location. Solar tracking systems designed by engineers help optimize the amount of sunlight that hits a PV .

Solar manufacturing encompasses the production of products and materials across the solar value chain. While some concentrating solar-thermal manufacturing exists, most solar manufacturing in the United States is related to photovoltaic (PV) systems. Those systems are comprised of PV modules, racking and wiring, power electronics, and system . How does photovoltaic (PV) technology work?

Photovoltaic (PV) materials and devices convert sunlight into electrical energy.

What is photovoltaic (PV) technology and how does it work?

PV materials and devices convert sunlight into electrical energy. A single PV device is known as a cell. An individual PV cell is usually small, typically producing about 1 or 2 watts of power.

Are co-extruded backsheets based on pp suitable for PV modules?

Summarized, co-extruded backsheets based on PP show great potential to be a valid replacement of standard PET based backsheets in PV modules. On the one hand, the PP backsheet so far proved excellent stability, exhibiting no severe material degradation after extended exposure to temperature, humidity and irradiation.

What is a crystalline silicon photovoltaic (PV) module?

A present-day crystalline silicon photovoltaic (PV) module is a multi-layer composite, where each layer has to fulfil special requirements. The main purpose of this layered encapsulation structure is mechanical stability and high functionality combined with optimized power output and electrical safety [ , , ].

What is a solar panel front cover?

The front cover is the part of the solar panel that has the function of protecting the solar panel from weather conditions and atmospheric agents. Again, tempered glass with low iron content is used since it offers good protection against impacts and is an excellent transmitter of solar radiation.

What is the angle of a PV panel?

This angle is only measured in the horizontal plane; in other words, it neglects the height of the sun. Angle of Incidence,  $\theta$ : This is the angle between the line that points to the sun and the angle that points straight out of a PV panel (also called the line that is normal to the surface of the panel). This is the most important angle.

What are the components of a solar panel?

The most crucial component of the solar panels is the photovoltaic (PV) cells responsible for producing electricity from solar radiation. The rest of the elements that are part of a solar panel protect and give firmness and functionality to the whole. The structure of a solar panel is divided into

different parts or components.

## What is the photovoltaic panel backplane line



### Solar panel production equipment and machinery

To the machinery and solar panel production equipment are then added a series of services provided by the equipment supplier, such as training activities prior to delivery of the line, the preparation of the layout with ...

### In-depth analysis of the photovoltaic backplane ...

The photovoltaic backplane can make the solar panel work normally for a long time in the harsh environment, and its most basic functions include insulation, water resistance, and weather resistance. Photovoltaic ...



### Long Solar Cable Run? Here's How to Minimize Line ...

Understanding Line Loss in Solar Power Systems. Understanding line loss is crucial when setting up your solar power system. When electricity flows through a wire, some of it gets lost along the way, impacting ...

### Photovoltaic Efficiency: Solar Angles & Tracking Systems

The energy output of a PV panel changes based

on the angle between the panel and the sun. The angle at which the sun hits a PV panel determines its efficiency and is what engineers use ...



## Solar Photovoltaic Manufacturing Basics

Power electronics for PV modules, including power optimizers and inverters, are assembled on electronic circuit boards. This hardware converts direct current (DC) electricity, which is what a solar panel generates, to alternating current ...



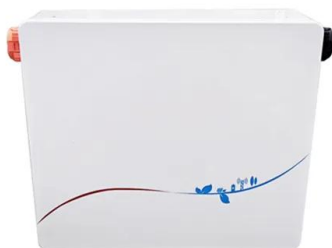
## Processes for the assembly and production of solar panels

The usual structure from top to bottom includes: PV glass, EVA, cells, EVA, backplane/PV glass, and aluminium alloy frame and junction box. However, creating a high-quality solar panel ...



## Solar Photovoltaic System Design Basics

Solar Photovoltaic System Design Basics. Solar photovoltaic modules are where the electricity gets generated, but are only one of the many parts in a complete photovoltaic (PV) system. In order for the generated electricity to be useful in ...



## Solar panel components, the structure of PV panels

The most crucial component of the solar panels is the photovoltaic (PV) cells responsible for producing electricity from solar radiation. The rest of the elements that are part of a solar panel protect and give ...



## The Complete Guide for Solar Panel Connectors

Solar panel connectors are one of the most underestimated components in photovoltaic (PV) installations, but they are one of the most essential. Tyco Electronics also designs all types of solar connectors under ...

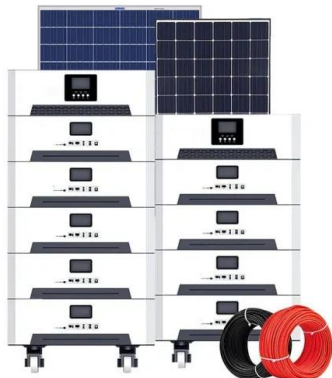
## DuPont(TM) Tedlar® Backsheets for photovoltaic modules

Backsheets are the outermost "layer" for a solar panel, the first line of defense for solar cells. They play a critical role in protecting solar panels from harsh, varying environmental conditions over ...



## How efficient are solar panels? Top brands compared ...

A solar panel's efficiency measures its ability to convert sunlight into usable electricity. If the sun shines on a solar panel with a 20% efficiency rating, 20% of the sun's energy will convert to solar energy in ideal conditions.



## How to identify solar backplane , NenPower

A crucial component within photovoltaic systems, the solar backplane serves multiple purposes. Its primary function is to provide structural stability and physical protection to solar cells from environmental influences ...



## Solar Photovoltaic Technology Basics

What is photovoltaic (PV) technology and how does it work? PV materials and devices convert sunlight into electrical energy. A single PV device is known as a cell. An individual PV cell is usually small, typically producing about 1 or 2 ...

## Contact Us

For catalog requests, pricing, or partnerships, please visit:  
<https://www.ssab-proiect.eu>