

European Solar and Energy Storage Solutions

What is the length and width of the 620 photovoltaic panel assembly



Overview

What are the different sizes of solar panels?

There are 3 standardized sizes of solar panels, namely: 60-cell solar panels size. The dimensions of 60-cell solar panels are as follows: 66 inches long, and 39 inches wide. That's basically a 66×39 solar panel. But what is the wattage?

That is unfortunately not listed at all. 72-cell solar panel size.

How big is a 96 cell solar panel?

96-cell solar panel size. The dimensions of 96-cell solar panels are as follows: 41.5 inches long, and 63 inches wide. That's a 63×41.5 solar panel. This form is a bit shorter but wider. This is the typical classification of solar panel sizes (based on the solar cell size). It's a bit theoretical and quite useless for most calculations.

How big is a 60 cell solar panel?

The area of a residential 60 cell solar panel is 17.62 square feet, and the area of a commercial 72 cell solar panel is 21.13 square feet. Solar panel installation companies will measure the area of your roof to determine how many panels can be installed safely. [Compare Quotes From Top-rated Solar Panel Installers.](#)

What is the difference between a 60-cell and 72-cell solar panel?

A 72-cell solar panel By comparing their dimensions, you can observe that the two solar panels differ mostly in length since they are identical in breadth. The thickness of a solar panel is typically 40 mm, and this is true for both 60-cell and 72-cell panels.

What are solar panel dimensions in cm?

The solar panel dimensions in cm are determined by the output of the manufacturer. The size of a solar panel is often not affected by the output. As

discussed, there are two sizes of solar panels, Hence the solar panel dimensions in centimeters would be around, Standard Solar Panel Dimensions in Feet.

How big are residential solar panels?

Most residential solar panels are 1.7m tall x 1.0m wide (or 1.7 m²), with a maximum power output of around 330W. Solar panels also come with 72 solar cells, which are larger to accommodate the additional cells. They are around 30% larger than residential solar panels, measuring approximately 2.1m tall x 1.1m wide (or 2.3 m²).

What is the length and width of the 620 photovoltaic panel assembly

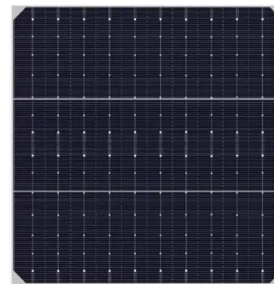


Solar Panel Sizes and Wattage Explained

Solar Panel Size. It focuses on maximum electricity generation and overall capacity rather than the quantity of panels. To calculate the required system size, multiply the number of panels by the output. For example, a 6.6 ...

Solar Panel Sizes and Wattage: A Comprehensive ...

Solar panels come in various sizes depending on their wattage or power output. A common residential solar panel size is approximately 65 inches by 39 inches, and typically has a power output of around 300 watts. ...



How-To Determining Solar String Size (Examples + Calculator)

3. Calculate the Maximum String Size. Take your inverter's maximum DC input voltage. Divide it by your adjusted Voc. This gives you the maximum number of panels you can have in a string. ...

What is the Size of a Solar Panel?

The average size of a solar panel is

approximately 65 inches long and 39 inches wide. This solar panel size comes with around 60 photovoltaic (PV) cells, a depth of 1.5 to 2 inches, and a square foot area of 17.62 feet.



Solar Panel Size And Weight: A Comprehensive Guide

These panels cover an area of 17.62 square feet and weigh around 40 pounds, excluding the weight of frames and mounting equipment. On the other hand, commercial solar panels typically feature 72

How to Properly Size Solar for Lighting and Power Projects

Learn how to size a solar power system for a lighting or power project correctly, and you will never worry about your system failing you for 20+ years SC, you will need a solar panel assembly ...



What Is the Average Size of a Solar Panel?

The size of a solar panel will depend on the size of your roof and also the brand. Generally, the size of the panel will range around 5 feet and may go up to 6 feet as well. Usually, 6 feet tall solar panels get installed at commercial buildings ...

Solar Panel Wire Size (Cable Gauge + Calculations Chart)

Solar Panel Wire Size (Cable Gauge + Calculations Chart) September 8, 2023
September 12, 2022 by Elliot Bailey. and PV technology becomes more widely used. The cost of wiring with the best quality cables of ...



A Guide to Solar Panel Dimensions

39x--66 inches. 3.25x--5.5 feet. A 72-cell solar panel. 39x--77 inches. 3.25x--6.42 feet. By comparing their dimensions, you can observe that the two solar panels differ mostly in length since they are identical in breadth. The ...

Chapter 6 Special Equipment: Special Equipment, Minnesota

620 Elevators, Dumbwaiters, Escalators, Moving Walks, Platform Lifts, and Stairway Chairlifts
Wiring from a photovoltaic panel or wiring external to the PV sign body shall be permitted as ...



Contact Us

For catalog requests, pricing, or partnerships, please visit:
<https://www.ssab-proiect.eu>