

European Solar and Energy Storage Solutions

What is the attenuation of ordinary photovoltaic panels



Overview

The attenuation rate of solar panels refers to the reduction in their efficiency and power output over time. Typically, solar panels degrade at a rate of about 0.5% to 1% per year, which means their energy production capacity diminishes gradually with age.

The attenuation rate of solar panels refers to the reduction in their efficiency and power output over time. Typically, solar panels degrade at a rate of about 0.5% to 1% per year, which means their energy production capacity diminishes gradually with age.

In recent years, the frequent occurrence of hazy weather has seriously influence on the output power of PV panels, aiming at this problem, output power attenuation characteristic test is implemented for PV panels with dust deposition, by taking PM accumulated concentration and installation angle as input variables, a output power attenuation .

PV cells are electrically connected in a packaged, weather-tight PV panel (sometimes called a module). PV panels vary in size and in the amount of electricity they can produce. Electricity-generating capacity for PV panels increases with the number of cells in the panel or in the surface area of the panel. PV panels can be connected in groups .

This report presents a performance analysis of 75 solar photovoltaic (PV) systems installed at federal sites, conducted by the Federal Energy Management Program (FEMP) with support from National Renewable Energy Laboratory and Lawrence Berkeley National Laboratory.

This article examines how the efficiency of a solar photovoltaic (PV) panel is affected by the ambient temperature. You'll learn how to predict the power output of a PV panel at different temperatures andWhat is the photovoltaic effect?

This conversion is called the photovoltaic effect. We'll explain the science of silicon solar cells, which comprise most solar panels. A photovoltaic cell is the most critical part of a solar panel that allows it to convert sunlight into

electricity. The two main types of solar cells are monocrystalline and polycrystalline.

What are photovoltaic (PV) solar cells?

In this article, we'll look at photovoltaic (PV) solar cells, or solar cells, which are electronic devices that generate electricity when exposed to photons or particles of light. This conversion is called the photovoltaic effect. We'll explain the science of silicon solar cells, which comprise most solar panels.

What is a PV panel?

PV cells are electrically connected in a packaged, weather-tight PV panel (sometimes called a module). PV panels vary in size and in the amount of electricity they can produce. Electricity-generating capacity for PV panels increases with the number of cells in the panel or in the surface area of the panel.

How many photovoltaic cells are in a solar panel?

There are many photovoltaic cells within a single solar module, and the current created by all of the cells together adds up to enough electricity to help power your home. A standard panel used in a rooftop residential array will have 60 cells linked together.

What is the efficiency of a PV cell?

The efficiency of a PV cell is the amount of electrical power that's coming out of the cell compared to the energy from the light shining on it. This number demonstrates how effective the cell is at converting energy.

How does photovoltaic (PV) technology work?

Photovoltaic (PV) materials and devices convert sunlight into electrical energy. What is photovoltaic (PV) technology and how does it work?

PV materials and devices convert sunlight into electrical energy. A single PV device is known as a cell. An individual PV cell is usually small, typically producing about 1 or 2 watts of power.

What is the attenuation of ordinary photovoltaic panels



What is the cause of the solar photovoltaic panels light attenuation?

This kind of phenomenon is mainly caused by the light of the battery to attenuation. In this paper, the system and briefly describe the light induced attenuation phenomenon. Photovoltaic ...

Output power attenuation rate prediction for photovoltaic panels

Photovoltaic (PV) power prediction is a key technology to improve the control and scheduling performance of PV power plant and ensure safe and stable grid operation with high-ratio PV ...



Solar Panel Efficiency

What are the most efficient residential solar panels in 2024? Residential solar panels range from 13 to 22.8% efficiency, with most panels hovering around the 20% mark. There are advantages to having high-efficiency solar panels, ...

Why Is Solar Cell Efficiency Low?

The problem with solar cell efficiency lies in the

physical conversion of sunlight. In 1961, William Shockley and Hans Queisser defined the fundamental principle of the solar photovoltaic industry. Their physical theory ...



What Is A Solar Panel? How does a solar panel work?

A Solar panels (also known as "PV panels") is a device that converts light from the sun, which is composed of particles of energy called "photons", into electricity that can be used to power ...

Solar Photovoltaic Technology Basics

What is photovoltaic (PV) technology and how does it work? PV materials and devices convert sunlight into electrical energy. A single PV device is known as a cell. An individual PV cell is usually small, typically producing about 1 or 2 ...



How do solar cells work? Photovoltaic cells explained

Solar cells are wired together and installed on top of a substrate like metal or glass to create solar panels, which are installed in groups to form a solar power system to produce the energy for a home. A typical residential ...

Solar Cell: Working Principle & Construction (Diagrams Included)

Key learnings: Solar Cell Definition: A solar cell (also known as a photovoltaic cell) is an electrical device that transforms light energy directly into electrical energy using the ...



Output power attenuation rate prediction for photovoltaic panels

In recent years, the frequent occurrence of hazy weather has seriously influence on the output power of PV panels, aiming at this problem, output power attenuation characteristic test is ...

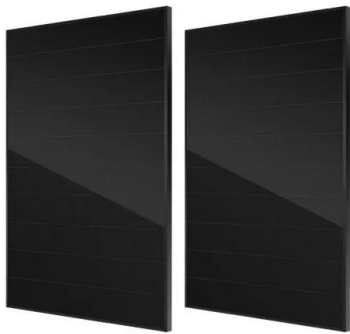
Solar Performance and Efficiency , Department of Energy

The conversion efficiency of a photovoltaic (PV) cell, or solar cell, is the percentage of the solar energy shining on a PV device that is converted into usable electricity. Improving this conversion efficiency is a key goal of ...



Bifacial Solar Panels: Everything You Need to Know

What Is a Bifacial Solar Panel. As the name implies, a bifacial solar panel is a module that has photovoltaic cells on both the front and back sides, designed to capture sunlight from both sides of the panel. Unlike ...



A study of solar photovoltaic systems and its applications in

...

This research contributes to the understanding of operating principles for PV panels under the steady state and the dynamic state. Secondly, based on complete PV output characteristics, ...



What Is A Solar Panel? How does a solar panel work?

A Solar panels (also known as "PV panels") is a device that converts light from the sun, which is composed of particles of energy called "photons", into electricity that can be used to power electrical loads. Solar panels can be used for a wide ...

How do Solar Panels Work? - Working of ...

The solar panel system is a photovoltaic system that uses solar energy to produce electricity. A typical solar panel system consists of four main components: solar panels, an inverter, an AC breaker panel, and a net meter. ...

 **TAX FREE**    

Product Model
HJ-ESS-215A(100KW/215KWh)
HJ-ESS-115A(50KW 115KWh)

Dimensions
1600*1280*2200mm
1600*1200*2000mm

Rated Battery Capacity
215KWH/115KWH

Battery Cooling Method
Air Cooled/Liquid Cooled





What are heterojunction technology (HJT) solar ...

HJT's latest headline grab came in May when REC Group announced the industry's most powerful 60-cell solar panel at 380 W, a feat made possible by HJT processes perfected by equipment manufacturer Meyer ...

Contact Us

For catalog requests, pricing, or partnerships, please visit:
<https://www.ssab-proiect.eu>