

European Solar and Energy Storage Solutions

What are the sizes of photovoltaic panels



Overview

There are three main sizes of solar panels to know: 60-cell, 72-cell, and 96-cell. What are the different sizes of solar panels?

There are 3 standardized sizes of solar panels, namely: 60-cell solar panels size. The dimensions of 60-cell solar panels are as follows: 66 inches long, and 39 inches wide. That's basically a 66x39 solar panel. But what is the wattage?

That is unfortunately not listed at all. 72-cell solar panel size.

How much does a solar panel weigh?

Most home solar panels are about 5.5 feet x 3 feet and weigh roughly 40 pounds each. Most of the time, you won't see the size of solar panels expressed in feet. Instead, you'll see it's listed as the number of solar cells within a panel, with the most common solar panel sizes being 60-cell and 72-cell.

What are the characteristics of a solar panel?

Solar Panel Structure: The solar panel dimension, composition, and photovoltaic (PV) technology. **Average Solar Panel Size:** Available roof space, solar panels size, and the load your roof can support. **Solar Irradiance:** Earth has many places with different sunlight hours and sums of solar energy.

How big is A 72-cell solar panel?

The average 72-cell solar panel size measures 3.25 feet by 6.42 feet and is laid out as a 6 x 12 grid, making them almost a foot taller than the 60-cell standard size panels. Given their large physical size, 72-cell solar panels may be awkward to carry, which is why two people are often required for installation.

What is a solar panel size calculator?

Their solar panel size calculator tool makes it easier to determine the best PV

system for your home by collecting household data and system preferences. Solar Calculator provides useful data by estimating storage requirements and surplus energy availability.

How big are commercial solar panels?

On the other hand, commercial solar panels typically feature 72 cells, with dimensions of approximately 3.25 feet by 6.5 feet. These panels cover an area of 21.13 square feet and weigh about 50 pounds. These larger panels are often chosen for more extensive solar projects.

What are the sizes of photovoltaic panels

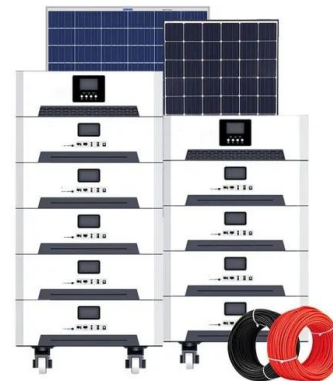


What's the Average Solar Panel Size and Weight?

Each panel contains a few dozen solar cells that measure roughly 6 inches by 6 inches. Most residential solar panels contain about 60 cells in a 6-by-10 grid configuration. The frame and space between cells add a few ...

Solar Panel Sizes & Dimensions (UK): Simply Explained

Solar panel sizes: Fundamentals. Understanding the arrangement and sizing of solar panels, known as the solar array, is crucial. What do we mean by solar panel sizes? So, when we talk ...



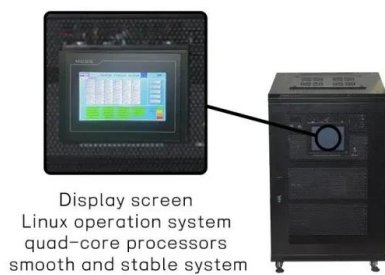
Small Solar Panels: Types, Size, & Benefits

Solar Panel Size: What Are The Typical Dimensions for Solar Panels. The typical dimensions for solar panels vary as per their wattage capacity. Ideally, solar panels are categorized based on the number of solar ...

Solar Cell Size: The Ultimate Guide to Choosing the ...

Residential and Commercial Solar Panel Sizes.

Solar panel sizes vary greatly depending on their use. A residential solar panel is typically smaller, aiming for around 65 inches by 39 inches in size. Meanwhile, ...



Solar Panels Size & Weight (Including Commercial ...

Using the average solar panel size of 6 feet by 3.25 feet, and assuming you leave minimal space between the panels, your rooftop solar system would measure roughly 4,875 square feet. Now, let's consider the weight of ...

Commercial Solar Panel Sizes: An In-Depth Guide to ...

When it comes to commercial solar panel sizes, you will find that the average dimension is about 77 inches by 39 inches. But more than just physical dimensions, the efficiency, material, and power output affect the ...



Solar Panel Sizing and Design

Solar Panel Sizing and Design. The amount of solar Tesla recommends for your home is based on several factors, including your roof size and your average monthly electric bill. You can see your recommended system size for your ...

Solar Panel Sizes and Wattage Explained

Solar Panel Size. It focuses on maximum electricity generation and overall capacity rather than the quantity of panels. To calculate the required system size, multiply the number of panels by the output. For example, a 6.6 ...



Energy storage(KWh)

102.4kWh

Nominal voltage(Vdc)

512V

Outdoor All-in-one ESS cabinet



Solar Panel Size & Weight Guide [+ Charts] - Solartap

Solar panel dimensions depend on how many cells are in each panel, as cell size is pretty uniform across all brands of residential solar panels. Each cell is usually 156 millimeters by 156 millimeters, or 6 inches long and 6 ...

How big is a solar panel? A guide to the different sizes and dimensions

For example, the equivalent of a 60 cell solar panel is a 120 half-cut cell solar panel. The equivalent of a 72 cell solar panel is a 144 half-cut cell solar panel. 120 half-cut cell ...



How big is a solar panel? A guide to the different ...

For example, the equivalent of a 60 cell solar panel is a 120 half-cut cell solar panel. The equivalent of a 72 cell solar panel is a 144 half-cut cell solar panel. 120 half-cut cell solar panels are roughly the same size as 60 ...



Solar Panel Size And Weight: A Comprehensive Guide

An average solar panel system requires between 15 to 19 solar panels and takes up 260 to 340 square feet of space. Solar panel efficiency, output, a good warranty, and a trusted brand are more important than focusing on solar panel ...

FLEXIBLE SETTING OF MULTIPLE WORKING MODES



4kW solar panel systems , Costs & output [UK, 2024]

5 ???· A 4kW solar panel system is a standard size for a household with three or four bedrooms, and can massively cut your electricity bills. However, most homes don't align with ...

Solar Panel Dimensions and Sizes: Complete Guide

How big is a solar panel? There are three main sizes of solar panels to know: 60-cell, 72-cell, and 96-cell. For commercial and residential solar panels, the 60-cell and 72-cell solar panels size are most commonly used as the 96-cell ...



Contact Us

For catalog requests, pricing, or partnerships, please visit:
<https://www.ssab-proiect.eu>