

## European Solar and Energy Storage Solutions

# What are the dimensions of the photovoltaic panels



## Overview

---

These panels typically measure: Length: Approximately 66 inches (5.5 feet) Width: About 39 inches (3.25 feet).

Standard residential solar panels measure 66 inches by 40 inches, or a little over 5 feet long and 3 feet wide. Each panel therefore takes up around 18 square feet.

Residential solar panels are rectangular and measure approximately 2-meters tall by 1-meter wide. They are typically between 3 and 5cm deep, although all dimensions vary by brand.

On average, 60 cell solar panels are 65 inches (1.65m) long, 40 inches (1m) wide, and about 1.5 inches (38mm) thick. The area of a 60 cell solar panel is generally about 18 ft<sup>2</sup> (1.68m<sup>2</sup>). What are the different sizes of solar panels?

There are 3 standardized sizes of solar panels, namely: 60-cell solar panels size. The dimensions of 60-cell solar panels are as follows: 66 inches long, and 39 inches wide. That's basically a 66×39 solar panel. But what is the wattage?

That is unfortunately not listed at all. 72-cell solar panel size.

What are the characteristics of a solar panel?

**Solar Panel Structure:** The solar panel dimension, composition, and photovoltaic (PV) technology. **Average Solar Panel Size:** Available roof space, solar panels size, and the load your roof can support. **Solar Irradiance:** Earth has many places with different sunlight hours and sums of solar energy.

How big are residential solar panels?

Most residential solar panels are 1.7m tall x 1.0m wide (or 1.7 m<sup>2</sup>), with a maximum power output of around 330W. Solar panels also come with 72 solar cells, which are larger to accommodate the additional cells. They are around

30% larger than residential solar panels, measuring approximately 2.1m tall x 1.1m wide (or 2.3 m<sup>2</sup>).

How much do solar panels weigh?

Solar panel weight varies by manufacturer, but standard 60 cell solar panels weigh about 40 pounds. Commercial solar panels weigh around 50 pounds. Frames and mounting equipment for both panels weigh about the same amount. It is also important to consider the weight of installing solar panels on your rooftop.

How big is A 72-cell solar panel?

The average 72-cell solar panel size measures 3.25 feet by 6.42 feet and is laid out as a 6 x 12 grid, making them almost a foot taller than the 60-cell standard size panels. Given their large physical size, 72-cell solar panels may be awkward to carry, which is why two people are often required for installation.

How big are commercial solar panels?

On the other hand, commercial solar panels typically feature 72 cells, with dimensions of approximately 3.25 feet by 6.5 feet. These panels cover an area of 21.13 square feet and weigh about 50 pounds. These larger panels are often chosen for more extensive solar projects.

## What are the dimensions of the photovoltaic panels

---

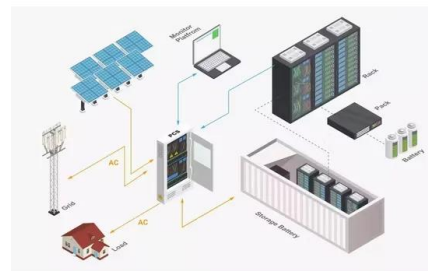


### What's the Average Solar Panel Size and Weight?

Solar panel dimensions vary based on brand, panel type, and total wattage. Here's an overview of key factors that affect solar panel size and weight: Brand: Different brands prioritize different technologies that impact ...

### How Big Are Solar Panels? Here's Their Typical Size and Weight

The ideal size for a solar panel system will be individual to you and your home. While the average system is about 20 to 25 panels, you need to understand what your energy needs are,



#### GRADE A BATTERY

LiFePO4 battery will not burn when overcharged over discharged, overcurrent or short circuit and can withstand high temperatures without decomposition.



### Solar Panel Sizes And Wattage , Sizing, Dimensions

The size or dimensions of the solar panels, measured in height by width, will determine the number of solar panels that will fit on your roof and the wattage of solar panels installed. And the power produced or wattage ...

### Solar Panel Dimensions and Sizes: Complete Guide

What is the typical size of a solar panel? There

are three solar panel sizes, including 60-cell, 72-cell, and 96-cell solar panels. How much do solar panels weigh? The weight of the panel, depending on the solar cell structure, ...



## Solar Panel Size and Weight Explained: How Big Are Solar Panels?

What is a standard solar panel size? The standard size for a solar panel is about 65 inches by 39 inches. An easier estimation of size is 5 feet by 3 feet. Solar panels differ in ...



## Solar Panel Sizes, Dimensions & Weight

Standard residential solar panels contain 60 solar cells (or 120 half-cut solar cells) and typically generate anywhere from 350W to 500W of electricity. The size of these panels can range from 1.6m tall x 1.0m wide, to ...



## Solar Panel Sizes (Energy Use & Dimensions Guide)

There are two common configurations, namely the 60-solar cell and the 72-solar cell per panel configuration. A 60-cell model is what's used in a 6 by 10 grid, while a 72-cell panel on a 6 by ...



## Solar Panel Sizes and Wattage Explained

Solar Panel Size. It focuses on maximum electricity generation and overall capacity rather than the quantity of panels. To calculate the required system size, multiply the number of panels by the output. For example, a 6.6 ...

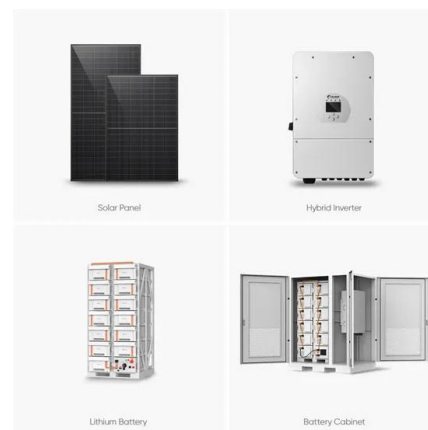


## How big is a solar panel? A guide to the different ...

On average, 60 cell solar panels are 65 inches (1.65m) long, 40 inches (1m) wide, and about 1.5 inches (38mm) thick. The area of a 60 cell solar panel is generally about 18 ft<sup>2</sup> (1.68m<sup>2</sup>).

## Solar Panels Size & Weight (Including Commercial ...

Residential Solar Panel Dimensions. A single residential solar panel typically has 60 PV solar cells and measures 5.4 feet by 3.25 feet (65 inches long by 39 inches wide). The panels are between 1.5 to 2 inches deep. ...



## What's the Average Solar Panel Size and Weight?

A typical home solar panel is 65 inches by 39 inches, or 5.5 feet by 3.25 feet, and weighs about 42 pounds. Panels may vary in size and weight depending on their total power output, type, and brand.



## Solar Panel Dimensions & Weight in Australia: The Ultimate Guide

The variation in output will usually not change the size of a single solar panel. The standard size of a 250W solar panel is approximately 1.7m x 1.0m, with slight variations ...



51.2V 150AH, 7.68KWH

## Solar Panel Dimensions & Weight in Australia: The ...

The variation in output will usually not change the size of a single solar panel. The standard size of a 250W solar panel is approximately 1.7m x 1.0m, with slight variations depending on the manufacturer. The ...



## Solar Panel Size And Weight: A Comprehensive Guide

Solar panel size varies from brand to brand, but you can expect your residential panels to measure around 5.5 feet by 3 feet and weigh about 40 to 50 pounds. Commercial solar panels tend to be about a foot longer than ...



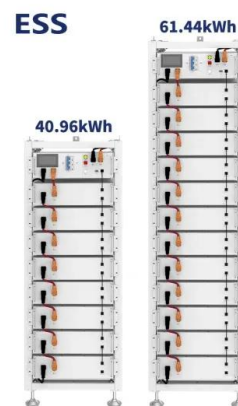


## Complete guide to solar panel size

An average solar panel system requires between 15 to 19 solar panels and takes up 260 to 340 square feet of space. Solar panel efficiency, output, a good warranty, and a trusted brand are more important than focusing on solar panel ...

### How Big Is A Solar Panel? Dimensions And Sizes

The solar panel industry showcases a dynamic interplay between panel size and efficiency, a relationship that fundamentally shapes the performance and practicality of photovoltaic systems. Panel size refers to the ...



## Contact Us

---

For catalog requests, pricing, or partnerships, please visit:  
<https://www.ssab-proiect.eu>