

## European Solar and Energy Storage Solutions

# What are double-glass photovoltaic panels



✓ 100KWH/215KWH

✓ LIQUID/AIR COOLING

✓ IP54/IP55

✓ BATTERY 6000 CYCLES



## Overview

---

There is a clear distinction between single and double glass solar panels. This difference should be clear by this- .

The front surface of double glass mono solar cells has an emitter layer and the back side has a dark covering. Passivated Emitter and Rear Cell.

Typically, solar panels have a front glass panel and a back plastic sheet. These single-sided glass panels are supported by frames across the entire construction. Manufacturers have.

What are Double Glass Solar Panels: In double glass solar panels, glass is put on both the sides of the solar panel.

What are Double Glass Solar Panels: In double glass solar panels, glass is put on both the sides of the solar panel.

Glass-glass module structures (Dual Glass or Double Glass) is a technology that uses a glass layer on the back of the modules instead of the traditional polymer backsheet.

In contrast, dual-glass solar panels replace the backsheet with a second layer of tempered glass on the rear side of the module.

## What are double-glass photovoltaic panels



### The comparison of Trombe wall systems with single glass, double glass ...

The measured data were used in modeling the Trombe wall systems with single glass, double glass and PV panels and simulating the temperature distribution and the air flow ...

### What advantages does double glass solar photovoltaic panels ...

SOLAR Photovoltaic Panels Double-sided modules are photovoltaic modules that can generate electricity on both sides. When the sun shines on double-sided modules, part of the direct ...



### Bifacial solar panels 580W - Jinko Solar Tiger Neo 72HL4-BDV 560 ...

Jinko Solar Tiger Neo 72HL4-BDV 560-580W is a bifacial solar panel with double glass technology. This panel is designed to capture sunlight from both sides, making it more efficient than ...

### Why Dual-Glass is the best solar panel technology for ...

Thus, using dual-glass solar PV modules for

rooftops offers the opportunity to increase the energy efficiency of commercial and residential buildings. What are dual-glass solar modules? Tempered glass effectively ...



 LFP 48V 100Ah



## Bifacial Solar Panels: Everything You Need to Know

The front side operates like a traditional solar panel, converting direct sunlight into electricity. The innovation lies in the panel's rear side, which is designed to absorb reflected and diffused light from the surrounding ...

## Renesola RS6-560-580NBG-E3 double glass

Bifacial photovoltaic panels 580W - Renesola RS6-560-580NBG-E3 double glass Bifacial photovoltaic panels are a cutting-edge solar technology that is becoming increasingly popular in the renewable energy industry. These panels can ...



## What are bifacial solar modules and how do they ...

The one thing that is constant is that power is produced from both sides. There are frameless, dual-glass modules that expose the backside of cells but are not bifacial. True bifacial modules have contacts/busbars on both the ...



## What is the Double Glass Photovoltaic Solar Panel?

Glass-glass module structures (Dual Glass or Double Glass) is a technology that uses a glass layer on the back of the modules instead of the traditional polymer backsheets. Originally double-glass solar panels were heavy and expensive, ...



## Hit czy kit? Moduły PV z podwójną szybą (dual glass)

Zacznijmy od podstaw, które pozwolą lepiej zrozumieć budowę i działanie szklanych modułów nazywanych również modułami glass-glass, double glass lub dual glass. Typowy moduł PV. ...

CE UN38.3 MSDS



## Double Glass Solar Panels Half Cell Mono PERC Panel

Besides, Coulee's dual-glass solar panel design is based on the IEC standard 1500V system, with a 30-year performance warranty, that is, no more than 2.5% power degradation in the first year and subsequent linear ...

Support Customized Product



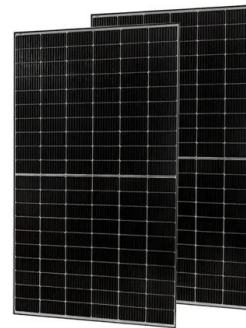
## Bifacial solar panels 670W - Renesola RS9-650-670MBG-E1 double glass

The Renesola RS9-650-670MBG-E1 is a bifacial double-glass solar panel with a maximum power output of 670 watts. Bifacial solar panels generate electricity from both the front and rear ...



## Glass-Glass Solar Panel Technology

Double glass solar panels. Double-glass modules are characterized by increased reliability, especially for large-scale photovoltaic projects. They include better resistance to higher temperatures, humidity and UV conditions, and have ...



## Bifacial solar panels: Benefits & Installation Scenarios (2024)

Typically, more affordable than glass/glass panel. 3.Glass/backsheet: Similar to its bifacial counterparts, it has a glass front-side and a non-transparent backsheet on the back. Maysun's ...



## Solar panels 465W - Renesola RS3-445-465MG-E2 ...

The Renesola RS3-445-465MG-E2 double glass solar panel is a high-efficiency photovoltaic module designed for residential and commercial use. With a positive power tolerance of 0~+3%, this panel delivers maximum power output and ...



## Contact Us

---

For catalog requests, pricing, or partnerships, please visit:  
<https://www.ssab-proiect.eu>