

## European Solar and Energy Storage Solutions

# Wfi storage and distribution system Austria



## Overview

---

What is a WFI cold water storage & distribution system?

The first one protects the system against excessive increase of temperature, cooling it to 15°C - 30°C. The second is used in the process of periodically heating water to a high temperature in order to sterilize the system. Another WFI cold water storage and distribution solution is a system with one P-line exchanger, which fulfills both functions.

What is a water for injection (WFI) storage and distribution system?

One of the implementations of a water for injection (WFI) storage and distribution system is storing the water at a constant temperature of approximately 80°C - 85°C. This temperature is maintained by a P-line heat exchanger, where the technical steam or water is supplied in the shell side.

What is a WFI Handbook?

Specifically, the publication examines risk based on: The Handbook includes many tables, diagrams, pictures, and references. It can support pharmaceutical companies around the world in setting up a suitable control strategy for ambient WFI systems.

Can WFI be produced Cold?

For a long time, the Ph. Eur. prescribed distillation as the only method for the production of WFI. Recently this was expanded – as it was in other pharmacopoeia as well – to include cold production procedures for the production of WFI.

Is distillation the final step in WFI production?

Prior to this revision, distillation was the final step in WFI production. The European Medicines Agency also published a Q&A document that incorporates additional requirements on the production of ambient WFI systems.

What is WFI pharmacology?

WFI is the critical raw material for pharmaceutical production. The qualities at the Point of Use are regulated in the international pharmacopoeia, such as USP, Ph. Eur. and JP. For a long time, the Ph. Eur. prescribed distillation as the only method for the production of WFI.

## Wfi storage and distribution system Austria

---



### Installing Purified Water Storage & Distribution Systems

The WFI storage and distribution systems may also be sterilised using superheated water or pure steam. Sanitization Procedures. So you've completed the design and installation stages of your water storage and distribution system. Hoping to put your feet up as the machines take over the work? If you don't want to be in hot water, you

### Design of Purified Water and Water For Injection Systems

PUW/ WFI Storage and Distribution

- o Ensure that it stays as PUW/ WFI
- o Minimise microbial growth
- o Keep it moving
- o Heat, chilling or ozonation
- o Regular sanitisation
- o Polished surfaces: ...



### Broschüre PWS MWFI v07 digital en

Storage and distribution system for cold WFI The safe storage and distribution of cold-generated WFI is the biggest challenge and requires a consistent hygienic design. The generated WFI is distributed from the storage tank to the consumers via a hygienic pump. Various measurement sensors ensure fully automatic and safe operation. Hygienic

## D/A/CH Affiliate: WFI Handbook (English Translation)

The ISPE D/A/CH water experts created this Handbook to give clear advice on good control strategies for ambient WFI systems. The Handbook includes: Regulatory Requirements; Production of Water for Injection; Discussion of Risks; Measurement Technology; Storage and Distribution; Sanitization; Qualification and Validation; Monitoring and Controls

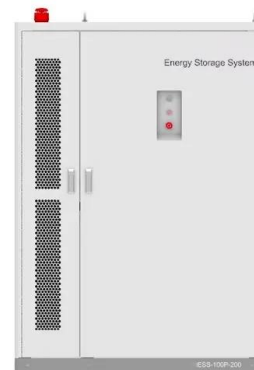


## Water For Injection Systems

can use the WFI cold, then a Genesys WFI system coupled with a WFI distribution system, using either regular hot water sanitisation or continuous ozone sanitisation system, will allow you the benefits of robust production of WFI along with reduced capital and operating costs. Water for injections The ultimate in water for injection generation

## PW/WFI Storage & Distribution System

To complete your plant water utility, Hiflux Systems also provides Purified water storage and distribution system. Precise analysis of client requirement is done for the plant design. The generated Purified water/ WFI is stored in the SS 316L Tank and then it is fed to the consumer by the process loop pump via Loop system.



## BWT WFI

Regular servicing ensures the safety, availability and value of BWT ultrapure water and WFI systems, avoiding costly repairs and expensive breakdowns. It pays to invest in BWT systems. BWT is a leading supplier of systems for the

generation, storage and distribution of Purified Water and Water for Injections (WFI).



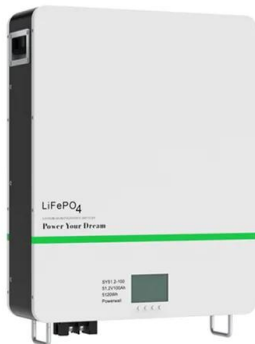
## WFI storage tank , Modernizing WFI production

ZETA provided the customer with a system for modernizing its WFI production. This included a 30,000 L storage tank, two distribution pumps and five WFI loops with 100 tapping points (hot and cold), which were combined into a main loop.



## Design of Purified Water and Water For Injection Systems

PUW/ WFI Storage and Distribution o Ensure that it stays as PUW/ WFI o Minimise microbial growth oKeep it moving oHeat, chilling or ozonation oRegular sanitisation oPolished surfaces: Ra < 0.5 6m is common o Prevent any contamination from entering oSealed system with 0.2 6m vent filters for breathing



## Storage & Distribution Systems

PW and WFI storage and distribution systems. The pharmaceutical water distribution system is usually organized in form of a circulation loop, assuring turbulent water motion in the pipes 24 hours a day and 7 days a week. In case of Purified Water, most often, the loop works in a

cold mode, at temperature in the range of 15 - 25 °C.



## D/A/CH Affiliate: WFI Handbook (English Translation)

The ISPE D/A/CH water experts created this Handbook to give clear advice on good control strategies for ambient WFI systems. The Handbook includes: Regulatory Requirements; Production of Water for Injection; Discussion of ...

## Storage and Distribution System for PW WFI , Sterinox Systems

Storage & Distribution System is required to store and distribute the PW / WFI within the plant. The system ensures stringent quality parameters of Pharmaceutical / Biotech industry. The distribution system is a closed loop system. Closed loop system ensures integrity of the PW & ...



## WATER FOR INJECTION STORAGE AND DISTRIBUTION

The smart design for hot or cold WFI storage and distribution includes various components and online monitoring instruments to ensure that the appropriate water quality is maintained. Dead leg free & 1:100 slope loop installation ensures

the complete drainability and microbial free WFI throughout the system and at user points. Send business



## Solution

Purified water and WFI storage and distribution skids. Puretech ensures that the equipment which comes into contact with the purified water is comprised of 316L stainless steel, ideally with internal surfaces polished to below 0.8 µm (ASME BPE).



## WFI and Pure Steam in Best Quality

STORAGE AND DISTRIBUTION INCLUDED WFI must be stored and distributed in a way that assures its quality is preserved. A challenge that you can easily leave to BWT's integrated storage and distribution system. The solution is called LOOPO. The system analyzes, sanitizes, monitors, con-trols and documents the complete process - fully automatic.

## WFI cold storage and distribution , Hexonic

Cold water for injection (WFI) storage and distribution systems typically have two P-line series exchangers installed. The first one protects the system against excessive increase of temperature, cooling it to 15°C - 30°C. The

second is used in the process of periodically heating water to a high temperature in order to sterilize the system.



## **WFI hot storage and distribution , Hexonic**

One of the implementations of a water for injection (WFI) storage and distribution system is storing the water at a constant temperature of approximately 80°C - 85°C. This temperature is maintained by a P-line heat exchanger, where the technical steam or ...



## **High Purity Water Systems, Purified Water Generation Systems, ...**

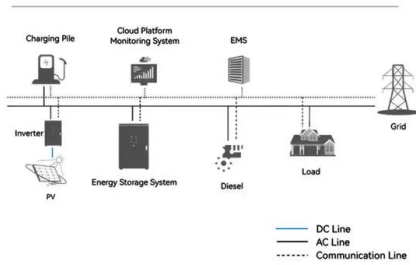
Manufacturers and Suppliers of High Purity Water Systems, Purified Water Generation Systems, Pure Steam Sampler, Water Storage and Distribution Systems in Mumbai, India. Search. [sales@technohipurity](mailto:sales@technohipurity) ; 022-26864489 / 7400067876; (WFI) Generation System and Distribution System, Pure Steam Generation and Distribution System and Process



## **WFI cold storage and distribution , Hexonic**

Cold water for injection (WFI) storage and distribution systems typically have two P-line series exchangers installed. The first one

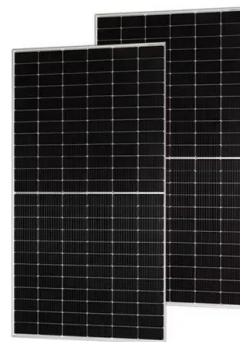
**System Topology**



protects the system against excessive increase of temperature, cooling it to 15°C - 30°C. The second is ...

**ISPE Guidance Documents**

The ISPE D/A/CH water experts created this Handbook to give clear advice on good control strategies for ambient WFI systems. The Handbook includes: Regulatory Requirements; Production of Water for Injection; Discussion of Risks; Measurement Technology; Storage and Distribution; Sanitization; Qualification and Validation; Monitoring and Controls



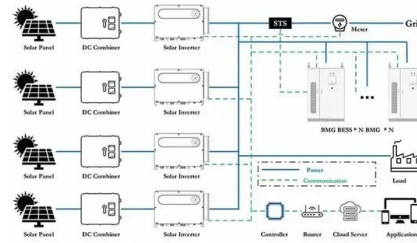
**PHARMACEUTICAL Pure Water Guide**

system from the feedwater, any openings in the system, or through the point of use. They will grow as biofilms on all the wetted surfaces of water purification components, including storage tanks and the plumbing of a distribution system. A biofilm is a layer composed mostly of glycoproteins and heteropolysaccharides in which

**LOOPO H**

The LOOPO H maintains the temperature in the entire storage and distribution system at the desired level. Cold withdrawals are provided with tap coolers if required. Service for WFI distribution systems with hot storage. Professional, preventative service is of the

utmost importance for long-term safety, reliability, and value retention.



## ISPE Guidance Documents

8.5 Storage and Distribution; 8.6 Sanitization; 8.7 Upgrading HPW Systems to WFI Systems; 8.8 Requalification of a Cold WFI System; 9 Monitoring and Controls; 9.1 Sampling Methods, Locations and Frequencies; 9.2 Sample Volumes; 9.3 Objectionable Microorganisms; 9.4 Warning and Action Limits; 9.5 Trending & Statistics; 10 Economic Aspect; 11

## URS For Water For Injection Storage and Distribution System

The document provides requirements for a water for injection storage and distribution system. It outlines specifications for the system including its purpose of storing and distributing water for injection, desired capacity, required utilities, process control needs, instrumentation requirements, GMP compliance standards, safety features, documentation requirements, automation ...



## Purified Water Storage And Distribution System, WFI ...

The storage and distribution system of pharmaceutical water includes storage unit,



distribution unit and water point pipe network unit. WFI storage and distribution systems must be sterilized regularly. Automatic control mode is ...

## Storage and Distribution System for PW WFI , Sterinox

...

Storage & Distribution System is required to store and distribute the PW / WFI within the plant. The system ensures stringent quality parameters of Pharmaceutical / Biotech industry. The distribution system is a closed loop ...



## Broschüre PWS MWF1 v06 final en

Storage and distribution system for cold WFI The safe storage and distribution of cold-generated WFI is the biggest challenge and requires a consistent hy-gienic design. The generated WFI is distributed from the storage tank to the consumers via a hygienic pump. Various measurement sensors ensure fully automatic and safe operation.

## WFI/PW Storage and Distribution System , WFI/PW Loop System

The WFI storage and distribution system like any other system in the pharmaceutical industry is suitable for handling physical, chemical and

microbiological properties of the water for injection. We aim for our customers' satisfaction and thereby achieve long-lasting association with them. Most of our pharmaceutical machineries are trendsetters in the market and PW storage and ...



## Contact Us

---

For catalog requests, pricing, or partnerships, please visit:  
<https://www.ssab-proiect.eu>