

European Solar and Energy Storage Solutions

U S Outlying Islands leoch lithium battery



Overview

What is a Leoch lithium battery?

With the core technologies of energy storage integration and application, the Leoch lithium battery focuses on household energy storage, network energy, power energy storage, intelligent energy, and more fields. Leoch has a professional BMS research and development team to meet the diversified energy demands of customers.

Are Leoch batteries suitable for SLI applications?

Leoch provides batteries specifically designed for SLI applications offering high power, increased cold cranking performance, very good charging acceptance performance and long cycle life. Leoch manufactures a comprehensive range of batteries which vary in technology and capacity for motorcycle, jet-skis, ATVs and other similar applications.

What makes Leoch batteries special?

Leoch manufactures Premium Lithium-Ion batteries with exceptional endurance during cyclic usage, long-life and high energy density to cover any renewable and energy storage requirement.

Who is Leoch lithium?

Leoch Lithium is thrilled to invite you to join us at The Battery Show. Discover how Leoch's lithium motive batteries can empower your sports and transportation. Leoch Lithium mainly produces reserve power batteries, SLI batteries and motive power batteries for a broad range of industries!.

Who is Leoch battery?

LEOCH BATTERY is your trusted partner for industrial and commercial energy storage solutions. Our expertise covers every aspect of the industry, from cutting-edge research and development to top-notch manufacturing, robust sales, and comprehensive services. We proudly serve clients in over 150

countries and regions worldwide.

Who does Leoch supply power battery solutions to?

The solutions are mainly supplied to the mainstream manufacturers in the industry. Leoch has the world's most advanced production equipment and power battery technology research and development equipment.

U S Outlying Islands leoch lithium battery

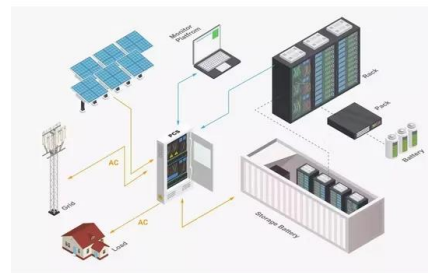


Products Center

US. EUR. UK. SG. IN. AU. About Lithium. Solutions. Products. Download. Technology & Services. Products Center. Lithium; Cell and battery system; 48V Communication Lithium Battery. Product features. Main application areas. Telecom - Maintenance. 1. High energy density. 2. Easy to install and upgrade E-mail: info.lithium@leoch Address

LEOCH

LEOCH BATTERY is your trusted partner for industrial and commercial energy storage solutions. Our expertise covers every aspect of the industry, from cutting-edge research and development to top-notch manufacturing, robust sales, and comprehensive services.



24V Lithium Iron Phosphate (LiFePO4) Batteries

LEOCH® 24V LFELI Series, Lithium Iron Phosphate (LiFePO4) batteries, are a "drop-in" replacement for traditional lead acid batteries offering 20x longer cycle life at 40% of the weight. These batteries get up to 5,000 cycles at 50% DOD while offering flexibility in configurations - supporting both series and parallel connection.

Products Center

Adopt lithium iron phosphate batteries with safe and long life cycle. 3. Maximum charge/discharge up to 1C PV off-grid backup power, off-island backup power. LW51.2-200 Specification.pdf. LW51.2-100 Specification.pdf. Specification. Model: Nominal Voltage: Capacity: E-mail: info.lithium@leoch Address:152 Beach Road #22-01/04



48V Pure Lead VRLA AGM Batteries

Leoch Lithium Exhibits at The Battery Show. Leoch Lithium is thrilled to invite you to join us at The Battery Show. Discover how Leoch's lithium motive batteries can empower your sports and transportation. Learn more. LEOCH ENERGY CORPORATION 10350 Brockwood, Dallas, TX 75238

HPL Lithium-Ion Battery Energy Storage System

Product Vertiv(TM) HPL Lithium-Ion Battery Energy Storage System. Designed by data center experts for data center users, the Vertiv(TM) HPL battery cabinet brings you cutting edge lithium-ion battery technology to provide compelling savings on total cost of ownership, with longer battery life, lower maintenance needs, easier installation and services, safe operations and ...



Leoch Lithium Battery (48Volts)

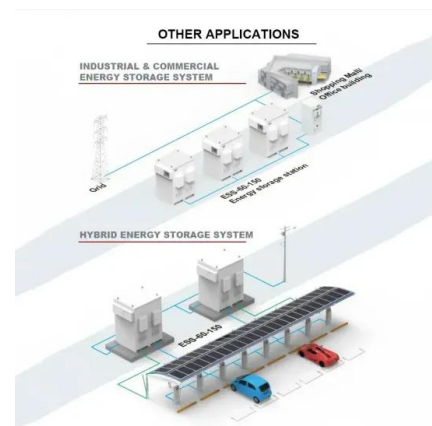
Key Features of the Leoch Lithium Battery. Nominal Voltage and Capacity: With a nominal voltage of 48V and a capacity of 100Ah, this battery provides a substantial energy output of



4.8kWh, making it ideal for various energy storage needs. Wall-Mount Design: The battery's wall-mount design allows for easy installation and space-efficient placement, making it suitable for both ...

Battery Energy Storage System

Leoch Lithium is thrilled to invite you to join us at The Battery Show. Discover how Leoch's lithium motive batteries can empower your sports and transportation. Learn more. LEOCH ENERGY CORPORATION 10350 Brockwood, Dallas, TX 75238 Tel: +972-688-6988 lec@leoch . About us.



Products Center

Lithium; Cell and battery system; Residential Energy Storage Battery (Rack-mounted) Product features. Main application areas. 1. Suitable for standard 19-inch cabinet with rack-mounted design. 2. Adopt lithium iron phosphate batteries with safe and long life cycle. 3. Maximum charge/discharge up to 1C . 4. Friendly human-machine interface. 5.

24V Lithium Iron Phosphate (LiFePO4) Batteries

LEOCH ® 24V LFELI Series, Lithium Iron Phosphate (LiFePO4) batteries, are a "drop-in" replacement for traditional lead acid batteries offering 20x longer cycle life at 40% of the weight. These batteries get up to 5,000 cycles at 50% DOD while offering flexibility in

configurations - supporting both series and parallel connection.

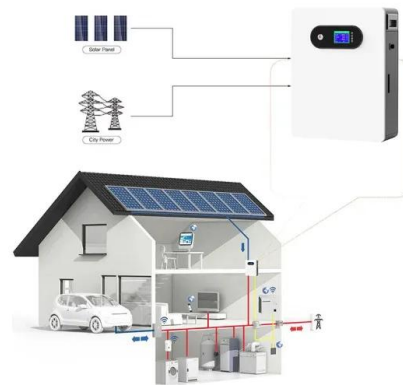


24V Lithium Iron Phosphate (LiFePO4) Batteries

LEOCH® 24V LFELI Series, Lithium Iron Phosphate (LiFePO4) batteries, are a "drop-in" replacement for traditional lead acid batteries offering 20x longer cycle life at 40% of the weight. These batteries get up to 5,000 cycles at 50% DOD ...

Vertiv Announces New Lithium-Ion Battery Cabinet ...

Vertiv (TM) HPL rack-based system delivers seamless integration between batteries, monitoring system and UPS. Singapore [April 29, 2019] - Vertiv today introduced the Vertiv (TM) HPL lithium-ion battery cabinet, for use ...



Why LEOCH

LEOCH® is committed to exceeding our customers' expectations and ensuring the highest level of quality in our products and service. LEOCH® offers one of the most comprehensive ranges of battery technologies in the industry - from Advanced ...

Why LEOCH

LEOCH® is committed to exceeding our customers' expectations and ensuring the highest level of quality in our products and service. LEOCH® offers one of the most comprehensive ranges of battery technologies in the industry - from ...



Contact Us

For catalog requests, pricing, or partnerships, please visit:
<https://www.ssab-proiect.eu>