

European Solar and Energy Storage Solutions

The photovoltaic module bracket is not parallel



Overview

If you're using more than one solar panel, connecting each PV module together and to a portable power station or other balance of system is essential. Solar panels on their own are useless. It's when you connect a PV module to a solar inverter or charge controller to convert or store electricity that the magic happens.

In most modern solar panel arrays, the physical act of wiring multiple solar panels together is as simple as plugging in a cable. But, before you do so, there's one essential decision to make. Should you connect your solar panels.

If you've already purchased your solar panel array and balance of system and you'd like to install them yourself, here are seven basic steps that apply to most residential photovoltaic.

Connecting solar panels in series or parallel has its pros and cons. Can you have the best of both worlds?

Yes, many large solar panel installations combine series and parallel wiring in one array to maximize the product of.

The solar array of a can be mounted on , generally with a few inches gap and parallel to the surface of the roof. If the rooftop is horizontal, the array is mounted with each panel aligned at an angle. If the panels are planned to be mounted before the construction of the roof, the roof can be designed accordingly by installing support brackets for the panels before the materials f.

What is a photovoltaic mounting system?

Photovoltaic mounting systems (also called solar module racking) are used to fix solar panels on surfaces like roofs, building facades, or the ground. [1] These mounting systems generally enable retrofitting of solar panels on roofs or as part of the structure of the building (called BIPV). [2].

What are the requirements to connect PV modules in parallel?

Strings connected in parallel must have the same number of PV modules in

series and must be of the same technology. It is recommended that PV modules connected to the same MPPT are of the same model. The series connected PV modules in a particular string must have the same orientation within 5 (azimuth and tilt angle).

Is parallel wiring a good idea for solar panels?

Parallel wiring increases the sum output amperage of a solar panel array while keeping the voltage the same. The choice you make can have a significant impact on your system's overall performance. This article will examine the pros and cons of series and parallel connections between solar panels of the same rated power and model.

Should a fixed PV module be tilted at the same angle?

It is a common practice to tilt a fixed PV module (without solar tracker) at the same angle as the latitude of array's location to maximize the annual energy yield of module. For example, rooftop PV module at the tropics provides highest annual energy yield when inclination of panel surface is close to horizontal direction.

Does connecting solar panels in parallel affect wattage?

No. Connecting solar panels in serial or parallel does not impact how much wattage they produce in laboratory conditions. Connecting solar panels in parallel increases amperage and keeps voltage constant. Series connections produce higher voltage while maintaining amperage, regardless of how many panels you use.

Can you switch a microinverter PV module from series to parallel?

Typically, microinverter PV modules are available in series or parallel connection options. Because of how the panels are constructed, you can't switch a microinverter panel from series to parallel just by changing the wiring between terminals from module to module.

The photovoltaic module bracket is not parallel



Solar Panel Mounting Brackets

Elevate your solar installation with our versatile Solar Panel Mounting Brackets. Ideal for metal, flat, and corrugated roofs, our brackets offer sturdy support. Parallel with Fence. Packing Size. 290*156*95mm. Gross Weight. 1.4kg per ...

A novel MPPT algorithm considering solar photovoltaic

...

IEICE Electronics Express, Vol.17, No.11, 1-6 Fig. 4 Stereogram of the proposed single stage standalone SPV system. Table I Hardware specifications of the single stage standalone SPV

...



PV Bracket, Solar Clamp, Aluminium Frame, China ...

Jiangsu Goodsun New Energy Co. is the Manufacturer of Photovoltaic Bracket, Solar Module Frame and China PV Mounting System. ISO & OEM Available. Skip to content. Facebook LinkedIn-in Whatsapp +86 135 2442 5435 ? +86 172 ...



Necessary accessories for PV installation: brackets

The choice of bracket directly affects the operational safety, breakage rate and construction investment of PV modules. Choosing the right PV bracket will not only reduce the project cost, but also reduce the post maintenance cost.



Solar Panel Wiring Basics: Complete Guide & Tips to ...

There are three wiring types for PV modules: series, parallel, and series-parallel. Learning how to wire solar panels requires learning key concepts, choosing the right inverter, planning the configuration for the ...

The Ultimate Guide to Photovoltaic Modules , Solar ...

Market Trend of Solar PV Modules. When we consider the current market for solar PV technologies, there is an expected to grow to USD 345 billion by 2020. The main reasons for this projected growth are because ...



The Complete Guide to Solar Panel Wiring Diagrams

Generally speaking, PV module arrays with more than 2 or 3 solar panels are more likely to be wired in series rather than parallel. The physical act of wiring the panels together is virtually identical, but the impact on the ...

Calculation & Design of Solar Photovoltaic Modules & Array

When we connect N-number of solar cells in series then we get two terminals and the voltage across these two terminals is the sum of the voltages of the cells connected in series. For ...



Z Profiles and Purlins Brackets for Solar power systems

The utility model relates to a solar PV mounting purlins bracket comprises a plurality of beams for fixing the solar photovoltaic modules and roof purlins fixed with mounting pads, a plurality of ...

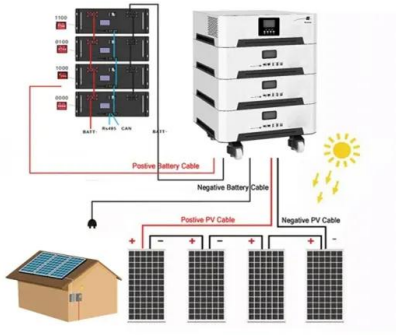
Connecting Solar Panels in Series or in Parallel: Which ...

This article will examine the pros and cons of series and parallel connections between solar panels of the same rated power and model. Mixing and matching PV modules with different specs or manufacturers is possible ...



Photovoltaic systems

As far as the roof-parallel or raised module mounting is concerned, our system-supplied solar brackets are a cost-efficient and quick method of module installation. Whether it is a new build, a renovation or retrofitting, we would be ...



Contact Us

For catalog requests, pricing, or partnerships, please visit:
<https://www.ssab-proiect.eu>