

European Solar and Energy Storage Solutions

The generator needs to be connected to natural wind



Overview

The wind turns the turbine's blades, which spin a shaft connected to a generator to make electricity.

The wind turns the turbine's blades, which spin a shaft connected to a generator to make electricity.

The energy in the wind turns two or three propeller-like blades around a rotor. The rotor is connected to the main shaft, which spins a generator to create electricity. Click NEXT to learn more. What is a wind turbine generator?

What is a wind turbine?

A wind turbine, or wind generator or wind turbine generator, is a device that converts the kinetic energy of wind (a natural and renewable source) into electricity. Whereas a ventilator or fan uses electricity to create wind, a wind turbine does the opposite: it harnesses the wind to make electricity.

How does a wind turbine generate electricity?

Unlike fans, which use electricity to move air, wind turbines use moving air to generate electricity. When the wind blows, its force turns the blades, which runs a generator and creates clean electricity. But some turbine designs can produce more clean energy than others.

How does a wind generator work?

Through the spinning blades, the rotor captures the kinetic energy of the wind and converts it into rotary motion to drive the generator, which produces either AC or wild AC (variable frequency, variable voltage), which is typically converted to grid-compatible AC electricity.

How do small wind energy systems work?

Small wind energy systems can be connected to the electricity distribution system. A grid-connected wind turbine can reduce your consumption of utility-

supplied electricity for lighting, appliances, and electric heat. If the turbine cannot deliver the amount of energy you need, the utility makes up the difference.

How do scientists use wind energy to generate electricity?

Scientists and engineers are using energy from the wind to generate electricity. Wind energy, or wind power, is created using a wind turbine. As renewable energy technology continues to advance and grow in popularity, wind farms like this one have become an increasingly common sight along hills, fields, or even offshore in the ocean.

Could a wind turbine be tethered to the ground?

Scientists and engineers are developing a wind turbine that would be tethered to the ground like a kite, but float thousands of meters in the air to capture jet streams' energy for electricity. Single wind turbines can be purchased by individuals to generate electricity for their home or business.

The generator needs to be connected to natural wind



Wind explained Electricity generation from wind

How wind turbines work. Wind turbines use blades to collect the wind's kinetic energy. Wind flows over the blades creating lift (similar to the effect on airplane wings), which causes the blades ...

Frequently Asked Questions about Wind Energy

The wind turns the turbine's blades, which spin a shaft connected to a generator to make electricity. Learn more about how a wind turbine works or view an interactive wind turbine animation to explore power plants, gearboxes, and ...



WINDEXchange: Small Wind Guidebook

Small wind energy systems can be connected to the electricity distribution system. A grid-connected wind turbine can reduce your consumption of utility-supplied electricity for lighting, appliances, and electric heat. If the turbine ...



Wind energy facts, advantages, and disadvantages

Wind energy is a small but fast-growing fraction of electricity production. It accounts for 5 percent of global electricity production and 8 percent of the U.S. electricity supply. Globally, wind ...



NEC Requirements for Generators and Standby Power Systems

Article 445, which covers generators, is one of the shortest. At first, this might not seem to make sense. But you don't need to size and protect conductors to a generator. You do need to size ...

Is it possible to add a wind turbine to my solar system?

In turn the wind generator needs to be matched with a mppt charger that needs to match the battery. I don't think this is all that difficult except that the necessary data to make these ...



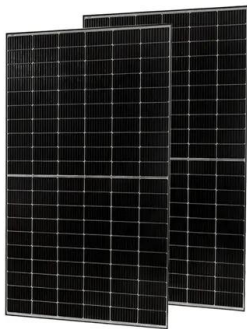
Wind energy facts, advantages, and disadvantages

Wind energy is a small but fast-growing fraction of electricity production. It accounts for 5 percent of global electricity production and 8 percent of the U.S. electricity supply. Globally, wind energy capacity surpasses 743 gigawatts, ...



How Do Wind Turbines Work? , Department of Energy

Wind turbines work on a simple principle: instead of using electricity to make wind--like a fan--wind turbines use wind to make electricity. Wind turns the propeller-like blades of a turbine around a rotor, which spins a generator, ...



Nature's Generator , 1800 Watt Solar Generator Home or Out Door

Dependable Power Solution: The Nature's Generator 1800 watt solar generator offers reliable energy, making it an ideal home battery backup and generator for RV, camping, or on-the-go ...

Wind power , Your questions answered , National Grid ...

Can wind farms really produce enough power to replace fossil fuels? The UK government's British energy security strategy sets ambitions for 50GW of offshore wind power generation - enough energy to power every ...



Energy 101: Wind

Wind turbines use wind to make electricity. Wind turns the propeller-like blades of a turbine around a rotor, which spins a generator, which creates electricity. The terms "wind energy" and "wind power" both describe the process by which the ...

Wind Energy Basics , NREL

Wind energy is one of the largest sources of clean, renewable energy in the United States, making it essential to a future carbon-free energy sector. Wind turbines do not release emissions that pollute our air or water, and they can ...



NEC Requirements for Generators and Standby Power ...

Article 445, which covers generators, is one of the shortest. At first, this might not seem to make sense. But you don't need to size and protect conductors to a generator. You do need to size ...



Putting Wind to Work

Wind energy is produced with wind turbines --tall, tubular towers with blades rotating at the top. When the wind turns the blades, the blades turn a generator and create electricity. Wind turbines can have a horizontal or ...



Contact Us

For catalog requests, pricing, or partnerships, please visit:
<https://www.ssab-proiect.eu>