

European Solar and Energy Storage Solutions

The functions of several connectors in photovoltaic panels

Home Energy Storage (Stackble system)



High Efficiency



Easy installation










Safe and Reliable



Perfect
Compatibility

Product Introduction

-  Scalable from 10 kWh to 50 kWh
-  Self-Consumption Optimization
-  Integrated with inverter to avoid the compatibility problem

-  LFP battery, safest and long cycle life
-  Stackable design, effortless installation
-  Capable of High-Powered
-  Emergency-Backup and Off-Grid Function

Overview

Solar panel connectors are electrical connectors that are designed specifically for use in solar photovoltaic (PV) systems. They provide an essential function in these systems by creating a link between solar panels, combining cables, connecting to the inverter, and making other necessary connections in the system. These.

To ensure its optimal functionality, it is paramount to learn the proper methods of operating a solar panel connector. In this part, we'll introduce how to lock and unlock a solar panel.

Selecting the appropriate connector type depends on your requirements. To help you choose the suitable one, we have detailed the most commonly used solar connectors, including.

As we can see, solar panel connectors are an essential component when creating a solar system. Not only do they provide the physical connection.

Connectors are needed to connect multiple solar panels together into a string. (Single panels do not need connectors.) They are available in 'male' and 'female' types built to be snapped together.

Connectors are needed to connect multiple solar panels together into a string. (Single panels do not need connectors.) They are available in 'male' and 'female' types built to be snapped together.

These connectors enable different parts of a solar PV system to be securely and reliably connected and so become the spine, or backbone, of solar installations.

Solar Panel Connector types play a crucial role in ensuring the stability and safety of the entire solar array while minimizing power loss and ensuring ease of installation and maintenance.

Connectors are responsible for establishing secure electrical connections between various components of the system, such as solar panels, inverters, and charge controllers, ensuring seamless energy.

To maximize frontal surface area available for sunlight and improve solar cell efficiency, manufacturers use varying rear electrode solar cell connection techniques: Passivated emitter rear contact (PERC) adds a polymer film to capture light Tunnel oxide passivated contact (TOPCon) adds an oxidation layer to the PERC film to capture more light [12] Interdigitated back contact (IBC) [13]

The functions of several connectors in photovoltaic panels

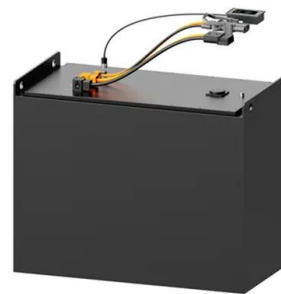


Series, Parallel & Series-Parallel Connection of PV Panels

Solar Module Cell: The solar cell is a two-terminal device. One is positive (anode) and the other is negative (cathode). A solar cell arrangement is known as solar module or solar panel where ...

The Complete Guide for Solar Panel Connectors

To connect solar panels in parallel, you require an additional component known as an MC4 combiner (or MC4 multi-branch connector), this name differs for other types of solar panel connectors. The image above ...



The Complete Guide for Solar Panel Connectors

The solar panel connector is used to interconnect solar panels in PV installations. Their main task is ensuring power continuity and electricity flow throughout the whole solar array. There are many types of solar ...

What Are The Different Types Of Solar Panel Connectors?

Solar panel connectors are crucial items in the

solar panel to the solar charge controller, into the solar inverter, and then power every appliance at the home (from refrigerators to air con units). The solar connector plugged ...



A Detailed Guide To Solar Panel Wiring

This article describes about Solar Panel wiring and what needs to be done to ensure that the Solar Panel wiring is done in the right way. Circuits wired in the series function similarly for the solar panel's systems. The ...

Types of Solar Panel Connectors (Simple Guide)

Connecting types of solar panel connectors is like putting together a Lego set, but with electricity! Here's a simplified guide: Identify the positive and negative wires: They're usually color-coded (red for positive, ...



What Are the Different Types of Solar Panel ...

A solar panel connector is a device used to establish a secure and reliable electrical connection between solar panels. They also link solar panels and other components of a photovoltaic (PV) system, such as ...



Solar Panel Junction Boxes: Enhancing Efficiency and Protection

The junction box is typically integrated into the solar panel during manufacturing, ensuring a seamless and reliable connection. Key Components and Features. A typical solar panel ...



Step-by-Step Guide: Connecting PV Panels to an ...

Understanding the functions of PV panels and inverters is essential before installation. For converting sunlight into direct current (DC) power devices known as Solar panels, or PV panels are used. There are several ...

What Is Solar Panel Junction Box? (Detailed Guide)

A solar panel junction box is a critical component of any solar energy system, allowing the safe connection between the photovoltaic (PV) panels and the rest of the electrical system. This device is designed to provide ...



Solar Combiner Box: A Beginner's Guide

DC disconnects are switches that interrupt the flow of direct current. The major function of the disconnect switches is to shut the incoming flow of power from the solar panels. You can turn the switch off when you don't ...



Solar Panel Connectors: Exploring Diverse Types for ...

How Are Solar Panels Connectors Used. Solar panel connectors are integral to the functionality of photovoltaic systems, facilitating efficient and secure energy transfer. Here's a general overview of their ...



The Ultimate Guide to Solar Panel Connectors

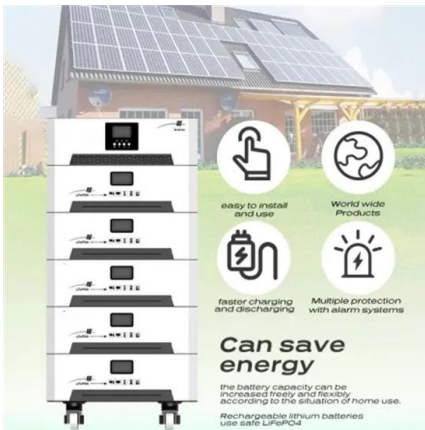
Solar panel connector is used to interconnect multiple solar panels with the portable power station. This Jackery guide will help you understand the concept of solar connector types in detail, how they work, and ...



Solar panel wiring basics: How to wire solar panels

However, as a solar professional, it's still important to have an understanding of the rules that guide string sizing. Solar panel wiring is a complicated topic and we won't delve into all of the ...





A Guide to Solar Connectors

Solar connectors create a secure and efficient electrical bridge between solar panels within solar power systems. Comprising male and female components, these connectors feature various locking mechanisms, such as ...

Solar Panel Components (List and Functions)

Solar power plants are like home solar panel systems multiplied several times over. Solar power plants are helpful for factories, industrial areas, agriculture, and civil engineering projects like power plants and construction. ...



Connecting Photovoltaic Panels Methods and Best Practices

A string inverter receives DC voltage in the range of several hundred volts, allowing for more efficient conversion to AC voltage of 230 V, used in home installations. increases the risk of ...

Contact Us

For catalog requests, pricing, or partnerships, please visit:
<https://www.ssab-proiect.eu>