

## European Solar and Energy Storage Solutions

# The back of the photovoltaic panel faces upwards



### Power Conversion System

- Single-stage three-level modularization
- Multi-branch input to reduce battery series and parallels connection

## Overview

---

Bifacial panels are best used in commercial or utility-scale projects where they can be elevated and angled away from mounting surfaces, allowing sunlight to reflect into the back of the panel. For residential projects, bifacial panels can be effective with ground-mounted systems .

Bifacial panels are best used in commercial or utility-scale projects where they can be elevated and angled away from mounting surfaces, allowing sunlight to reflect into the back of the panel. For residential projects, bifacial panels can be effective with ground-mounted systems .

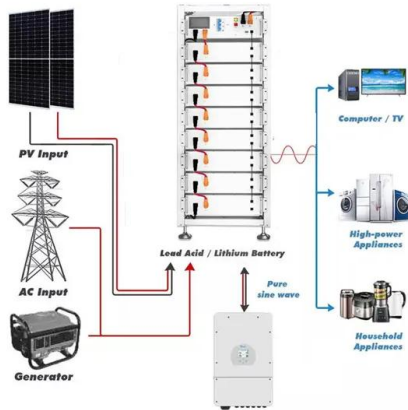
A new generation of bifacial panels capable of capturing light reflected off the ground onto the back side of the panel may be a game changer. Unlike photovoltaic (PV) systems that use traditional monofacial modules, bifacial modules allow light to enter from both the front and back sides of a solar panel.

Best solar panel direction overall. South is the best direction for solar panels to face overall. In nearly all situations, you will see the greatest utility bill savings and quickest payback period if your panels point south instead of in another direction.

In the northern hemisphere, the general rule for solar panel placement is, solar panels should face true south (and in the southern, true north). Usually this is the best direction because solar panels will receive direct light throughout the day.

For maximum output, the sweet spot for solar panels in the continental U.S. is facing roughly south and tilted between 15 and 40 degrees, according to the Department of Energy. That keeps the panels in the sun longer than other setups—which means more electricity per panel per year and bigger savings on your utility bills.

## The back of the photovoltaic panel faces upwards



### End-of-life management: Solar Photovoltaic Panels

This report is the first-ever projection of PV panel waste volumes to 2050. It highlights that recycling or repurposing solar PV panels at the end of their roughly 30-year lifetime can unlock an estimated stock of 78 million ...

### Monofacial vs bifacial solar PV modules

Monofacial vs bifacial solar PV modules. At cell structure level, traditional monofacial cell back surface is an aluminum back surface field, which blocks light absorption on the back. Optimizing bifacial cells requires adopting ...



### How to Find the Best Orientation and Angle of Solar ...

...

Assess the direction the solar panel will face and adjust the tilt angle accordingly. Utilizing calculation methods outlined in resources like " How to Find the Best Orientation and Angle " can assist in ...

### Do Solar Panels Have to Face South?

In the quest for renewable, clean, and efficient

energy, solar panels have undoubtedly stolen the spotlight. As we increasingly rely on solar power, one question keeps popping up: Do solar panels have to face south? ...

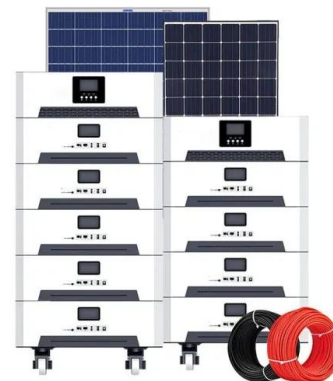


## Solar panel angle. How to calculate the angle of solar panel

Source: How does the angle between the sun and the horizon would impact the output of solar panels When it comes to solar panel angle and its calculation, it must be noted that there are ...

## Bifacial Modules: There Are Two Sides to Every Solar Panel

A new generation of bifacial panels capable of capturing light reflected of the ground onto the back side of the panel may be a game changer. Unlike photovoltaic (PV) systems that use ...



## A new performance assessment methodology of bifacial photovoltaic solar

Solar photovoltaics (PVs) were introduced in 1983 by Charles Fritts with a 30 cm<sup>2</sup> PV cell made of Gold and Selenium [1]. After the introduction of PV, the next major step in ...

## A Comprehensive Guide on Solar Back Sheet for Solar Panels

A Comprehensive Guide on Solar Back Sheet for Solar Panels. The solar backsheet is a crucial component of a solar panel as it safeguards the photovoltaic cells against environmental and ...



## Solar panel orientation: How using East-West ...

In order for solar panels to reach their peak generation capacity, a panel must face the correct direction and have the appropriate tilt according to their geographical location and meteorological data.

## Which Is More Important: Solar Panel Orientation or ...

Solar panel angle is also known as the vertical tilt of your solar panel system. For example, a solar panel array that's perpendicular to the ground has a 90-degree angle tilt. To harness solar power more efficiently, solar ...



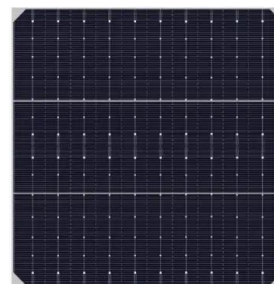
## Solar panel orientation: How using East-West structures improves ...

According to experts, the placement and orientation of solar panels is just as important as which type of solar panel is used in a given situation. In order for solar panels to ...



### What is the best direction for solar panels to face?

In the northern hemisphere, the general rule for solar panel placement is, solar panels should face true south (and in the southern, true north). Usually this is the best direction because solar ...



### Which Direction Should Solar Panels Face?

This solar panel system receives the sun from the best angle and when it is at its peak. However, for east-west facing roofs, there are still many scopes to generate electricity throughout the day. Generally, a north-facing roof is not ideal for ...



### Solar Panel Orientation and Positioning of Solar Panel

For a fixed solar installation, it is preferred that the PV panels are installed with a centralised tilt angle representing the vernal equinox, or the autumnal equinox, and in our example data ...





## What is the Best Direction for Solar Panels to Face

Solar panels don't need to face south to generate energy, but it's usually the best direction for the most output. A south-facing solar panel can provide the highest amount of energy by up to 30%. However, east--or west ...

## What Direction Should My Solar Panels Face?

When you make the decision to install a solar panel system at your home, there are going to be several questions on your mind. How large should your system be, how much is it going to cost, what company you ...



## Solar panels: East-facing or west-facing roof?

Time of use tariff schedule as displayed on the Reposit First monitoring app. Afternoon peak prices are higher than shoulder or off-peak prices at other times.. West-facing may be the better option even on a flat-rate tariff. ...



## Contact Us

For catalog requests, pricing, or partnerships, please visit:  
<https://www.ssab-proiect.eu>