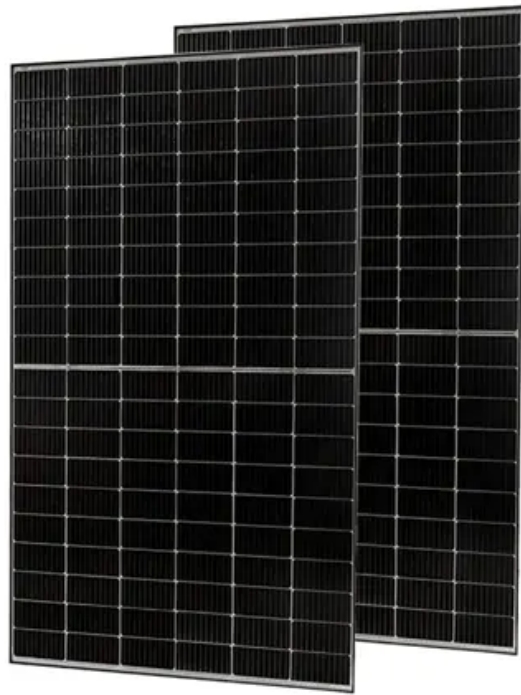


European Solar and Energy Storage Solutions

Sun photovoltaic panels



Overview

modules consist of a large number of solar cells and use light energy () from the Sun to generate electricity through the . Most modules use -based cells or . The structural () member of a module can be either the top layer or the back layer. Cells must be protected from mechanical damage and moistur.

A photovoltaic (PV) cell, commonly called a solar cell, is a nonmechanical device that converts sunlight directly into electricity. Some PV cells can convert artificial light into electricity.

A photovoltaic (PV) cell, commonly called a solar cell, is a nonmechanical device that converts sunlight directly into electricity. Some PV cells can convert artificial light into electricity.

A solar panel is a device that converts sunlight into electricity by using photovoltaic (PV) cells. PV cells are made of materials that produce excited electrons when exposed to light.

At a high level, solar panels are made up of solar cells, which absorb sunlight. They use this sunlight to create direct current (DC) electricity through a process called "the photovoltaic effect."

Solar panels, also known as photovoltaics, capture energy from sunlight, while solar thermal systems use the heat from solar radiation for heating, cooling, and large-scale electrical generation.

A photovoltaic cell is the most critical part of a solar panel that allows it to convert sunlight into electricity. The two main types of solar cells are monocrystalline and polycrystalline.

Sun photovoltaic panels



Which Type Of Solar Panel Is Best For You?

CIGS solar panels are much more expensive to produce than CdTe or amorphous silicon. The overall cost of a thin-film solar panel installation is usually lower than a monocrystalline or polycrystalline solar installation. ...

Photovoltaics in Cyprus , Cost , Cyprus Solar Panels

Photovoltaic systems can be installed on flat and inclined roofs and on the ground. Our team can visit the place where you want the solar panels to be installed, evaluate the amount of space, ...



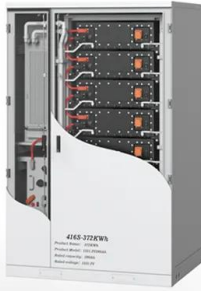
Solar Facade Cladding System , BIPV , Solstex by Elemex

Efficient. Powerful. Reliable. Introducing Solstex ®. A building-integrated photovoltaic (BIPV) facade system designed to harness the power of the sun, stand up to the harshest of climates, ...

Photovoltaic system

PV systems convert light directly into electricity and are not to be confused with other solar technologies, such as concentrated solar power

????????????????,?????????????????? ...



Best Solar Panels: Which One Should You Choose?

Panasonic. Best for roofs with tight spaces. Panasonic is most commonly known in the U.S. as a TV and small appliance manufacturer, but the Japanese company is also a global leader in solar panels. In 2021, Panasonic ...



Contact Us

For catalog requests, pricing, or partnerships, please visit:
<https://www.ssab-proiect.eu>