

## European Solar and Energy Storage Solutions

# Sudan raid battery backup unit



## Overview

---

MegaCli AdpAllInfo [A0] HW Configuration [BBU]

What is a raid battery backup unit (BBU)?

Refer to Installing a RAID Battery Backup Unit (BBU) for more information. The BBU is an intelligent battery backup unit that protects disk write cache data during a power loss on the RAID controller for up to 72 hours. Cisco recommends that you replace the BBU once per year or after 1,000 recharge cycles, whichever comes first.

What is a battery backup unit (BBU or BBM)?

With corresponding protective mechanisms, the content of these caches would be lost when a power failure occurs. For that reason, the cache content is often protected by a BBU or BBM (depending on the manufacturer, either the term Battery Backup Unit (BBU) or Battery Backup Module (BBM) is used).

Do RAID controllers need a BBU?

Note: RAID controllers, which do not use a BBU to protect the cache (but instead copy the content of the cache to flash memory in the event of a power failure), do not require special cache protection maintenance (e.g. Adaptec ZMCP or LSI CacheVault). BBUs always consist of two components:.

What is a battery backup test?

This test serves to determine the precise capacity of the battery and thereby determine an estimated value for the potential backup duration during a power failure. The objective of this test is the determination of the most precise estimated value possible. For this, the battery will first be fully charged.

Do RAID controllers need cache protection maintenance?

With such maintenance, complete data loss may be a risk during a power failure in the worst case. Note: RAID controllers, which do not use a BBU to protect the cache (but instead copy the content of the cache to flash memory

in the event of a power failure), do not require special cache protection maintenance (e.g. Adaptec ZMCP or LSI CacheVault).

## Sudan raid battery backup unit

---



### MegaRAID Battery Backup Unit User's Guide

- A customized 240-pin DIMM module that contains a RAID key, which contains hardware needed to use advanced MegaRAID features - A remote intelligent transportable battery backup unit (iTBBU) The intelligent Transportable Battery Backup Unit (iTBBU) protects the integrity of the cached data on the DIMM by providing backup power if

### All About RAID Batteries - Preventing Data Failure with Ha

A RAID battery (also known as a RAID cache protection battery or Battery Backup Unit) is a key component installed on a RAID controller card. These small battery units connect directly to the card in your server, workstation, or external disk array. In this blogpost, we're talking RAID battery backup units (BBUs) - what they're good for



### Explain to me whether I need a battery backup for my RAID card

It has cache of 256MB or 512MB and a BBU (battery backup Unit) and directly supports 8 disks via 2 x 4 port cables PERC6i/R is an entry level "RAID Controller" that supports RAID0 and 1. It has no BBU capability and supports 8 disks via 2 x 4 port cables. So if you are getting PERC6/iR's, battery backup doesn't enter the



picture :whiste:

## MegaRAID® LSiBBU08 Intelligent Battery Backup Unit

The LSI(TM) MegaRAID LSiBBU08 is an intelligent battery backup unit (iBBU) that protects the integrity of the cached data on a MegaRAID RAID controller for up to 48 hours (depending on the derated retention time selected) in case of a complete AC power



## All About RAID Batteries - Preventing Data Failure with ...

A RAID battery (also known as a RAID cache protection battery or Battery Backup Unit) is a key component installed on a RAID controller card. These small battery units connect directly to the card in your server, ...

## ??? BBU ???????

BBU(battery backup unit)????????,????????????????????  
????????,BBU????????????????????,????????????????



## Intel® RAID Battery and Maintenance Free Backup Unit

1 Choose either the Intel® RAID Smart Battery AXXRSBBU3 or RAID portable cache module AXXRPCM3. Using both the AXXRSBBU3 and

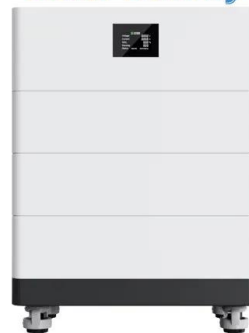
AXXRPCM3 isn't supported. 2 The AXXRIBBU1 noted as a product code for the Intel® RAID Controller SRCSAS144E is only valid for the Intel® Storage Server SSR212MC2R. See the Intel® Storage Server SSR212MC2 ...



**N8103-120 ?????? ????????**  
**RAID Battery ...**

RAID Battery Backup Unit User's Guide x ?? ???  
 ??? ???? ??????? ?????????????????????? x M ak  
 es ury od thim nl b f g p c . After reading this  
 manual carefully, store it in a safe place. x  
 855-900686-001- A

**High Voltage  
 Solar Battery**



**Battery Backup Unit - Lite-On  
 Cloud Infrastructure Platform**

1.75kW Battery Backup Unit: Shelf Controller: CM-12CP-010U: Manages the Power Shelf and Li-ion Battery Backup System (BBS) Site Management Controller: CP-13EC-010U: Rack management and control: 21-inch OCP Rack: KT-2141-121: 21-inch Open Frame Rack: PRODUCTS. Power Shelf Solutions; Server and Network Power Solutions;



**All About RAID Batteries -  
 Preventing Data Failure with  
 Ha**

A RAID battery (also known as a RAID cache protection battery or Battery Backup Unit) is a key component installed on a RAID controller card. These small battery units connect directly

to the card in your server, workstation, or external disk array.



## Battery Backup Unit (BBU/BBM) Maintenance for RAID Controllers

3ware provides the ability to perform a so-called "battery test" with their RAID controllers. This test serves to determine the precise capacity of the battery and thereby determine an estimated value for the potential backup duration during a power failure.

## Battery Backup Unit - Wikipedia

Das Batterie-Modul eines Hewlett-Packard-RAID-Controllers.. Eine Battery Backup Unit (BBU), bei manchen Herstellern auch als Battery Backup Module oder Battery Backup Write Cache Enabler (BBWC) bezeichnet, versorgt akkugestützt den Cache eines RAID-Controllers bei einem Stromausfall kurzzeitig mit Energie. Sie gewährleistet damit zusätzlich zu einer ...



## MegaRAID iTBBU03 Battery Backup Unit

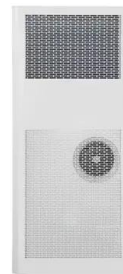
MegaRAID iTBBU03 Transportable Battery Backup Unit Quick Installation Guide Author: Charles Dean Subject: This guide contains



installation instructions for connecting the LSIiTBBU03 (intelligent transportable battery backup unit) to the MegaRAID SAS 8888ELP RAID controller. Keywords: MegaRAID, Storage Adapters, Serial Attached SCSI Technology (SAS)

### N8103-123/124 ?????? ???????? RAID ...

RAID Battery Backup Unit User's Guide x ?? ???  
???? ???? ?????????? ?????????????????????? x M ak  
es ury od thim nl b f g p c . After reading this  
manual carefully, store it in a safe place.  
855-900757-001- C



### linux+bbu????,?:RAID??BBU???

BBU??????(Battery Backup Unit)???,??????????(FR  
U),????????????,?????????????BBU?BBU?RAID?????????  
?,?????????????????????????????????72??(?????????100??)?

### Battery Backup Unit (BBU/BBM) Maintenance for RAID ...

3ware provides the ability to perform a so-called "battery test" with their RAID controllers. This test serves to determine the precise capacity of the battery and thereby determine an estimated value for the potential backup ...



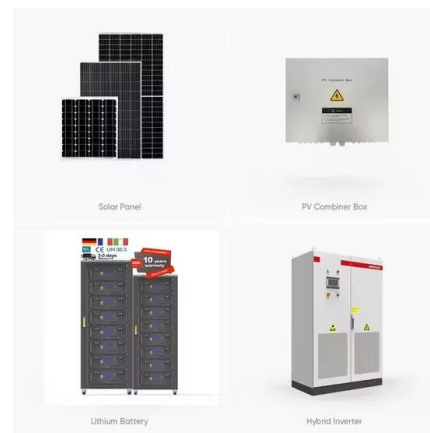


## Battery Backup Unit User's Guide

RAID Battery Backup Unit User's Guide ????  
 Preface ?????NE3303-153  
 ?????(?????????????)?????????  
 ???  
 ??????????

### N8103-153/162 ?????? ?????????? RAID ...

RAID Battery Backup Unit User's Guide ????  
 Preface ?????N8103-153/162  
 ?????(?????????????)?????????  
 ???  
 ?????????????



18650 CELL  
 18650 Battery Pack 2S1P



18650 Battery Pack 4S1P

## LSI Logic BAT1S1P-A MegaRAID Battery Backup Unit for 9265

...

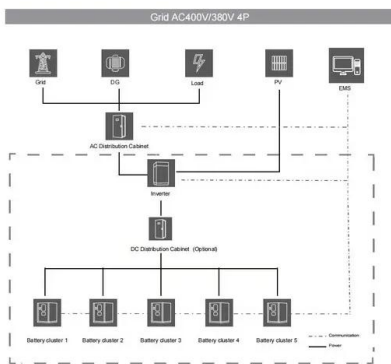
Buy Lsi Logic Bat1s1p-a Lsi-ibbu08 Megaraid 3.7v 1.59ah 5.6wh Battery Backup Unit For Lsi 9260, 9261, And 9280 Series Controllers. Refurbished. In Stock..Great customer service.  
 Application/usage: Raid Controller Physical  
 Characteristics : Width: 6.0 Depth: 6.0 Thickness: 2.0 Additional Information :

## MegaRAID iBBU05 Battery Backup Unit Quick Installation

...

this unit combines a battery pack with a daughtercard. Figure 1 LSiBBU05 and Components 1 - J2 Battery Pack Harness

Connector 2 - J1 Connector 3 - J14 Board-to-board  
 Connector 4 - Battery Pack Harness Important:  
 For detailed information about this battery, see  
 the Intelligent Battery Backup Unit for  
 1078-based MegaRAID Products Guide.



## Replacing the RAID battery in the TS7620

For up to 72 hours following a power outage or power failure, the RAID battery backup unit (BBU) protects the integrity of any data residing on the MegaRAID controller. Important: The RAID BBU is internal and cold-swappable. Before you begin, review the information in TS7620 ProtecTIER Electrostatic discharge procedures.

**???bbu?????**

???BBU????????????????,???Backup Battery Unit?  
 ??????????????RAID????????,????????????????????????  
 ?????



## Contact Us

For catalog requests, pricing, or partnerships, please visit:  
<https://www.ssab-proiect.eu>