

## European Solar and Energy Storage Solutions

# Steel structure photovoltaic support rail specifications



## Overview

---

What is a power rail PV module mounting system?

The PV module mounting system engineered to reduce installation costs and provide maximum strength for parallel-to-roof, tilt up, or open structure mounting applications. The POWER RAIL mounting system is designed with the professional PV solar installer in mind.

What is a solidrail PV mounting system?

The SolidRail PV mounting system is suitable for almost all roof coverings. The focus of the application is on flexible solutions for roof connection.

What materials should be used for a modular support rail?

Module support rails, clips, and rubber shall be fabricated from corrosion and UV resistant materials (ex. pre-galvanized steel, hot dipped galvanized steel, aluminum, stainless steel, powder-coated steel, etc.) that will maintain structural integrity over.

What is a power rail mounting system?

The POWER RAIL mounting system is designed with the professional PV solar installer in mind. The top-clamping rails utilize a single tool with a revolutionary patented RADTM Fastener for faster bolt placement. The unique shape of the RAD provides an anti-rotation feature, locking the bolt in the proper orientation when installed.

Which mounting systems are suitable for photovoltaic assemblies?

The SolidRail mounting system for photovoltaic assemblies is suitable for nearly all coverings. This includes pan tiles, plain tiles, slate tiles, trapezoidal sheet metal, corrugated fibre cement, corrugated sheet metal and standing seam roof. Comprehensive range of mounting rails for varying load profiles Robust and structurally proven.

Is solarmount light rail better than standard rail?

Lower-cost SolarMount Light rail employs 38 percent less aluminum than standard rail, yet it's more than strong enough for flush applications. Use the same installer-friendly top mounting clamps and footing components that work with SolarMount standard rail.

## Steel structure photovoltaic support rail specifications

---



### Research and Design of Fixed Photovoltaic Support ...

The results show that: (1) according to the general requirements of 4 rows and 5 columns fixed photovoltaic support, the typical permanent load of the PV support is 4679.4 N, the wind load being 1

### ZM Ecoprotect® Solar for PV mounting systems , thyssenkrupp Steel

Given these long operating times, high-performance steel substructures are required in particular for the solar modules of photovoltaic ground-mounted systems. With ZM Ecoprotect ® Solar, ...

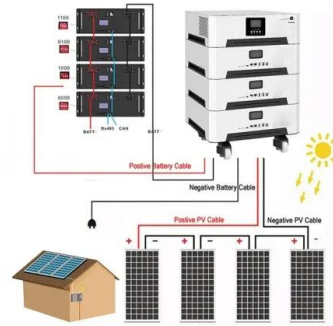


### Solar Panel Structure - Design & Manufacturer in India

In the railed mounting system, 4 rails are used to fix 2 rows of solar panel. While in the shared rail system only 3 rails will be used to mount 2 rows. The middle rail will be shared by both the ...

### Solar Rail Splice Buying Guide: Your Key to Efficient Solar Panel

A solar rail splice is a connector used to join two solar rails, creating a continuous support structure for solar panels. It is designed to withstand the weight of the panels and the ...

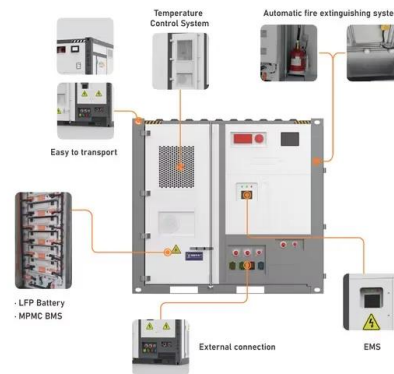


## Design and Analysis of Steel Support Structures Used ...

In this paper, aiming to provide a contribution to this gap, a PVSP steel support structure and its key design parameters, calculation method, and finite element analysis (FEA) detailed with

## Axe Struct , Solar Mounting Structures Manufacturer

Solar Panel Mounting Structures for all applications. Axe Struct (Pty) Ltd is a South African Manufacturer and wholesale supplier of absolute efficient PV Solar mounting systems for all applications. We provide structural analysis and ...



## Research and Design of Fixed Photovoltaic Support ...

focus of attention. At present, the photovoltaic support is mostly steel structure in the market, but the aluminum profile has the characteristics of light weight, beautiful appearance, corrosion ...

## K2 SolidRail System

The SolidRail mounting system for photovoltaic assemblies is suitable for nearly all coverings. This includes pan tiles, plain tiles, slate tiles, trapezoidal sheet metal, corrugated fibre cement, corrugated sheet metal and standing seam ...



## Explaining Solar Mounting Systems Datasheets: A ...

**Rails:** Rails provide a base for mounting the solar panels, acting as the backbone of the structure.  
**Clamps:** Clamps secure the solar panels to the rails, ensuring they are held firmly in place.  
**Bolts and Fasteners:** These ...

## PV Waterproof Rail

**Product Description:** The PV Waterproof Rail is made of high quality ZAM275 material with the performance of high load-bearing, wind resistance, ensure the safety of solar panels.. And the PV Waterproof Rail secure the solar panels ...



## Contact Us

For catalog requests, pricing, or partnerships, please visit:  
<https://www.ssab-proiect.eu>