

European Solar and Energy Storage Solutions

Standard size diagram of the back of photovoltaic panels



Overview

These specifications were created with certain assumptions about the house and the proposed solar energy system. They are designed for builders constructing single family homes with pitched roofs, which offer adequate.

Builders should use EPA's online RERH SSAT to demonstrate that each proposed system site location meets a minimum solar resource potential.

EPA has developed the following RERH specification as an educational resource for interested builders. EPA does not conduct third-party verification of the site data or the online site assessment results, or verify whether the home.

The builder should install a 1" metal conduit from the designated inverter location to the main service panel where the system is intended to.

What is a photovoltaic system diagram?

Creating the photovoltaic system diagram represents an important phase in relation to assessing your solar PV system production levels. It's fundamental to be able to size all system components as it affects the productivity and efficiency of the entire system.

How to design a solar PV system?

When designing a PV system, location is the starting point. The amount of solar access received by the photovoltaic modules is crucial to the financial feasibility of any PV system. Latitude is a primary factor. 2.1.2. Solar Irradiance.

What are the Design & sizing principles of solar PV system?

DESIGN & SIZING PRINCIPLES Appropriate system design and component sizing is fundamental requirement for reliable operation, better performance, safety and longevity of solar PV system. The sizing principles for grid connected and stand-alone PV systems are based on different design and functional requirements.

What are the different sizes of solar panels?

There are three main sizes of solar panels to know: 60-cell, 72-cell, and 96-cell. For commercial and residential solar panels, the 60-cell and 72-cell solar panels size are most commonly used as the 96-cell measures 17.5 square feet – which can make for a challenging fit on your roof.

What are the components of a photovoltaic system?

A photovoltaic system is characterized by various fundamental elements: accumulators. The photovoltaic generator is the set of solar panels and is the element that converts solar energy into electricity.

What should be included in a solar PV system diagram?

The diagram should have sufficient detail to clearly identify: Figure 10: 70-Amp Double Pole Breaker. Figure 11: Site/System Diagram. The diagram should include: array breaker for use by the location, size, orientation, conduit size and location and balance of system solar PV system. component locations.

Standard size diagram of the back of photovoltaic panels

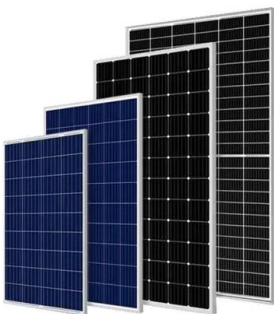


What Size Fuse Do I Need for My Solar Panels? Types ...

What Size Fuse for 100W Solar Panel? If you're wondering what size fuse for 100W solar panel, the answer is 15 amps. This is because the maximum current that a 100W solar panel can output is 8.3 amps. So, if you ...

Photovoltaic system diagram: the useful design guide

The photovoltaic system diagram is the fundamental design asset for installing an efficient solar energy system. Find out everything you need to produce these important design elements without encountering any ...



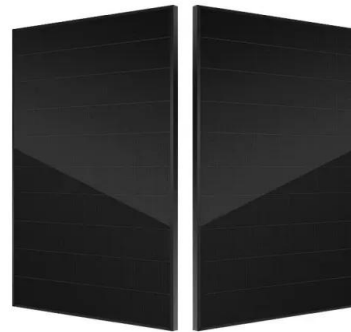
Understanding the Components of a Typical Solar Power System: ...

Discover the typical solar power system diagram and learn how solar energy is harnessed to provide clean and renewable electricity for homes and businesses. enabling excess ...

Solar Panels Dimensions & Drawings , Dimensions

Solar panels, also known as photovoltaic (PV)

cells, are devices that convert sunlight directly into electricity. Each panel is made up of many small cells that capture sunlight and, through a process called the ...

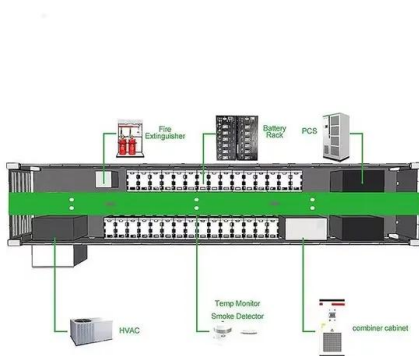


Thin-Film Solar Panels: An In-Depth Guide , Types, Pros & Cons

When talking about solar technology, most people think about one type of solar panel which is crystalline silicon (c-Si) technology. While this is the most popular technology, ...

Solar Panel Ratings Explained

This means that when this solar panel is producing 100 Watts of power under Standard Test Conditions, It will be generating 5.62 Amps of current. On the other hand, the Short Circuit Current rating (Isc) on a solar ...

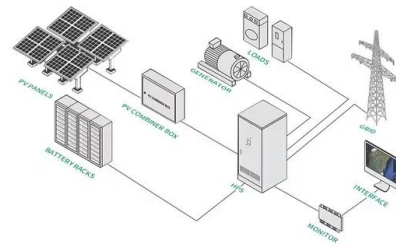


Solar Panel Dimensions and Sizes: Complete Guide

There are three main sizes of solar panels to know: 60-cell, 72-cell, and 96-cell. For commercial and residential solar panels, the 60-cell and 72-cell solar panels size are most commonly used as the 96-cell measures 17.5 square feet - ...

Solar Panel Sizes, Dimensions & Weight

For one thing, solar panel sizes or dimensions, measured in height by width, will determine exactly how many panels can fit on the roof space you have available. And how many panels you can install directly affects the ...



Ultimate Guide to Solar Panel Size and Weight

Source: Mission Solar Energy Usually, residential rooftop solar panels are approximately 65 inches tall, 40 inches wide, and 2 inches thick. In feet, that would be 5.4 ft. by 3.3 ft.. Commercial solar modules are usually ...

Parameters of a Solar Cell and Characteristics of a PV Panel

Related Post: How to Design and Install a Solar PV System? Working of a Solar Cell. The sunlight is a group of photons having a finite amount of energy. For the generation of electricity by the ...



Bypass Diodes in Solar Panels

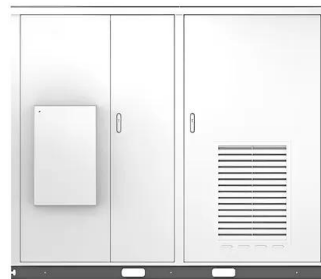
Photovoltaic solar cells convert the photon light around the PN-junction directly into electricity without any moving or mechanical parts. PV cells produce energy from sunlight, not from heat. In fact, they are most efficient when they are ...



Solar Panel Dimensions Chart

The number of solar cells, their size, and how they are wired will determine how much power a solar panel produces (wattage) and, consequently, the size of the solar panel. So ultimately, the higher the solar panel wattage, ...

Solar



-  **All In One**
Integrating battery packs
-  **Intelligent Integration**
Integrated photovoltaic storage cabinet
-  **High-capacity**
50-500kWh
-  **Rated AC Power**
50-100kW
-  **Degree of Protection**
IP54
-  **Altitude**
3000m(>3000m derating)
-  **Operating Temperature Range**
-20~60°C,(Derating above 50 °C)

Ground-mounted solar panels: what you need to know

What is a ground-mounted solar panel system? you have the flexibility to work with solar panels of any size, including large 'commercial' modules featuring 72 cells (or 144 half-cells) or more, ...

Contact Us

For catalog requests, pricing, or partnerships, please visit:
<https://www.ssab-proiect.eu>