

European Solar and Energy Storage Solutions

Square tube photovoltaic support construction



Overview

What is a new cable-supported photovoltaic system?

A new cable-supported photovoltaic system is proposed. Long span, light weight, strong load capacity, and adaptability to complex terrains. The nonlinear stiffness of the new cable-supported photovoltaic system is revealed. The failure mode of the new structure is discussed in detail.

What type of mounting structure is used for PV panels?

This mounting structure is often used for residential systems. Helical piles. In sites with weak granular soils, helical piles are driven deep into the ground and attached to the PV panels. They can withstand uplift forces caused by the soil expanding or by strong winds as the helixes in the poles keep them fixed in place.

How is a PV module fixed?

The PV module is fixed on Cables 1 and 2 by using back-fasteners. The maximum stress is calculated as $6.60 \times 10^7 \text{ N/m}^2$ at the four nodes connecting the load-bearing cables and the PV module. Similar results are observed in Case 180°, as shown in Fig. 13 (b).

Can thin glass be used in photovoltaic modules?

Some research studies were conducted to support the determination of the location and height of the C-channel rail or the use of thin glass in photovoltaic modules .

Are ground-mounted PV systems a good choice for large-scale solar farms?

Ground-mounted PV systems have been widely used in large-scale solar farms in deserts, open areas and mountains. These systems are cost-effective and easy to construct. However, they occupy large land resources, have high requirement for land flatness, and damage soil and vegetation.

Are solar panel support configurations feasible in closed sanitary landfills?

Objective: To analyze the structural feasibility of solar panel support configurations in closed sanitary landfills for better use of these spaces, thus increasing the country's capacity to generate renewable energy in areas where the affectation of ecosystems is low or null.

Square tube photovoltaic support construction



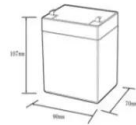

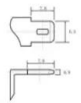
Design and Analysis of Steel Support Structures Used in ...

studied on design and stability analysis of SP support structure made of mild steel. The result shows that the SP support structure can able to sustain a wind load with velocity 55m -1.

Design and Analysis of Steel Support Structures Used in ...

Solar panels (SPs) can be various cross-sections (e.g., square, rectangle) and sizes but their main purpose is to PV water pumping, remote building, solar cars and airplanes, satellites ...



12.8V6Ah

Nominal voltage (V):12.8
 Nominal capacity (Ah):6
 Rated energy (Wh):76.8
 Maximum charging voltage (V):14.6
 Maximum charging current (A):6
 Floating charge voltage (V):13.6-13.8
 Maximum continuous discharge current (A):10
 Maximum peak discharge current @ 10 seconds (A):20
 Maximum load power (W):100
 Discharge cut-off voltage (V):10.8
 Charging temperature (°C):0-+50
 Discharge temperature (°C):-20-+60
 Working humidity: <95% R.H (non condensing)
 Number of cycles (25 °C, 0.5c, 100%doD): >2000
 Cell combination mode: 32700-4s1p
 Terminal specification: T2 (6.3mm)
 Protection grade: IP65
 Overall dimension (mm):50*70*107mm
 Reference weight (kg):0.7
 Certification: un38.3/msds

Comparison and Optimization of Bearing Capacity of ...

In recent years, the advancement of photovoltaic power generation technology has led to a surge in the construction of photovoltaic power stations in desert gravel areas. However, traditional equal cross-section ...

How Strong Is Square Tubing

Square tubing is highly versatile and can be used in a wide range of applications. Here are some scenarios where square tubing is the preferred

choice: Structural Applications: Due to its strength and rigidity, square tubing ...

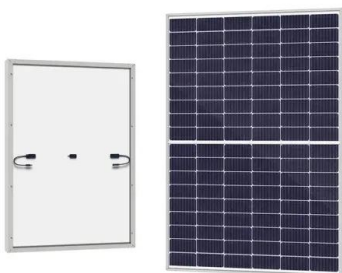
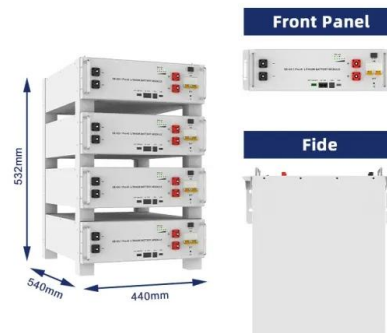


Design and Analysis of Steel Support Structures Used in Photovoltaic ...

The results show that: (1) according to the general requirements of 4 rows and 5 columns fixed photovoltaic support, the typical permanent load of the PV support is 4679.4 N, ...

Materials, requirements and characteristics of solar photovoltaic

Solar photovoltaic bracket is a special bracket designed for placing, installing and fixing solar panels in solar photovoltaic power generation systems. The general materials are aluminum ...



Steel Beams & Tubing For Solar Farms , North Shore Steel

The solar panel mounts are comprised of a steel tube and steel beams. The round or square steel tube can be used for the based of the solar panel mount, and the steel wide flange beams or I ...

Roof square tube ballast photovoltaic support system

Inicio; Productos Menú Toggle. Sistema fotovoltaico en suelo Menú Toggle. Sistema fotovoltaico en suelo; Sistema fotovoltaico BIPV; Carport Sistema FV; Agricultura Sistema FV; Sistema ...



China largest rectangular steel pipe factory, manufacturer, supplier

Tianjin Yuantai derun group is the largest square tube manufacturer in China. Its main products are square tube, rectangular tube, round tube, galvanized tube, hot-dip galvanized steel tube, ...

Structural Requirements for Solar Panels -- Exactus ...

ASCE 7 Guidelines. The American Society of Civil Engineers (ASCE) provides guidelines for the structural design of solar panel installations through their publication, ASCE 7 1. These guidelines cover the essential ...



Contact Us

For catalog requests, pricing, or partnerships, please visit:
<https://www.ssab-proiect.eu>