

European Solar and Energy Storage Solutions

Specifications of ground-mounted photovoltaic brackets



Overview

The solar array of a can be mounted on , generally with a few inches gap and parallel to the surface of the roof. If the rooftop is horizontal, the array is mounted with each panel aligned at an angle. If the panels are planned to be mounted before the construction of the roof, the roof can be designed accordingly by installing support brackets for the panels before the materials f.

Ground-mount systems are the literal foundation of solar projects, so choosing not just the right product, but the best manufacturer for each site or portfolio is crucial. In our Ground-Mount Buyer's Guide this year, EPCs and developers building C&I and utility-scale sites can get a snapshot of the fixed tilt products, tracker systems and .

Ground-mount systems are the literal foundation of solar projects, so choosing not just the right product, but the best manufacturer for each site or portfolio is crucial. In our Ground-Mount Buyer's Guide this year, EPCs and developers building C&I and utility-scale sites can get a snapshot of the fixed tilt products, tracker systems and .

IEC TS 62738:2018(E) sets out general guidelines and recommendations for the design and installation of ground-mounted photovoltaic (PV) power plants. A PV power plant is defined within this document as a grid-connected, ground-mounted system comprising multiple PV arrays and interconnected directly to a utility's medium voltage or high .

ProSolar®'s GroundTrac® solar module ground mount system is designed for residential and commercial applications. Components are integrated with ProSolar®'s RoofTrac® Rail and Clamping as well as easily accessible 1-1/2" Schedule #40 galvanized water pipe.

Ground-based mounting supports include: Pole mounts, which are driven directly into the ground or embedded in concrete. Foundation mounts, such as concrete slabs or poured footings; Ballasted footing mounts, such as concrete or steel bases that use weight to secure the solar module system in position and do not require ground penetration. This .

Key Components and Specifications. Solar mounting systems comprise several

components: Mounting Brackets: These secure the solar panels to the mounting structure, ensuring stability. Rails: Rails provide a base for mounting the solar panels, acting as the backbone of the structure.

Specifications of ground-mounted photovoltaic brackets

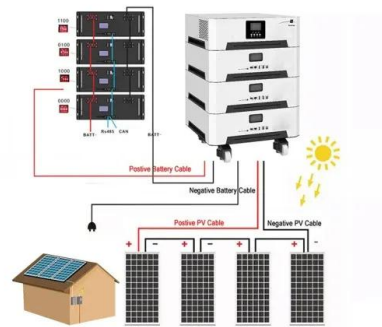


ProSolar® GroundTrac®

ProSolar®'s GroundTrac® solar module ground mount system is designed for residential and commercial applications. Components are integrated with ProSolar®'s RoofTrac® Rail and Clamping as well as easily accessible 1-1/2" ...

Solar Rooftop Mounting Buyer's Guide 2022 , Solar ...

SnapNrack roof and ground mount systems feature a single tool installation, pre-assembled snap-in hardware, integrated wire management, integrated grounding/bonding and Class A Fire Rating in accordance with ...



SPECIFICATION SHEET We tackle complex PV engineering

...

Ground mount applications will be the mainstay of Solar PV either as fixed tilt or, single axis tracking, especially as the project sizes grow countand ries, businesses and individuals look to

...

Solar Mounting Brackets & Systems

Which S-5! Attachment is The Right Way for

Mounting Balance of System Components?
 Balance of System refers to all of the various components of a PV system beyond the actual modules themselves. At S-5!, we offer metal roof ...



Large-Scale Ground Photovoltaic Bracket Selection Guide

For large-scale ground photovoltaic bracket, selecting the appropriate type of support structure is a critical step in improving the overall performance and economic benefits of the system. In ...

Photovoltaic mounting system

Overview Mounting Orientation and inclination Shade PV Fencing Sound barriers See also

The solar array of a PV system can be mounted on rooftops, generally with a few inches gap and parallel to the surface of the roof. If the rooftop is horizontal, the array is mounted with each panel aligned at an angle. If the panels are planned to be mounted before the construction of the roof, the roof can be designed accordingly by installing support brackets for the panels before the materials f...



Solar Panel Pole Mounts - Side & Top of Pole ...

Multi-pole Solar Panel Mounts. Large Solar

- ✔ LIQUID/AIR COOLING
- ✔ INTELLIGENT INTEGRATION
- ✔ PROTECTION IP54/IP55
- ✔ BATTERY /6000 CYCLES



Generator Systems. Whether roof mount, ground mount, top of pole mount, side of pole mount, tower mount or custom solar panel mounting, we can accommodate your requirements. Call ...

Your guide to solar panel mounts in 2024

Your solar installer will know the best option to get the most use out of your solar system. Below is our expert review of solar panel mounting solutions, which highlights the top three solar panel mount brands, and discusses the pros and ...

GRADE A BATTERY

LiFePO4 battery will not burn when overcharged, over discharged, overcurrent or short circuited and can withstand high temperatures without decomposition.



Ground-Mount Buyer's Guide 2022: Trackers, fixed tilt

Fast rail attachment with T-bolts. The SunTurf Ground Mount System easily integrates Helio Rails with Schedule 40 Steel Pipes. Combine SunTurf with SunModo Ground Screws or Augers and do a complete install of ...

IEC TS 62738:2018

IEC TS 62738:2018(E) sets out general guidelines and recommendations for the design and installation of ground-mounted photovoltaic (PV) power plants. A PV power plant is defined within this document as a grid-connected, ground ...





Best Practice: Solar Roof Mounting System Design and Construction

At its core, a solar roof mounting system consists of a series of brackets, rails, clamps, and fasteners. the material--be it metal, tile, or asphalt--will dictate the appropriate ...

Explaining Solar Mounting Systems Datasheets: A ...

Key Components and Specifications. Solar mounting systems comprise several components: Mounting Brackets: These secure the solar panels to the mounting structure, ensuring stability. Rails: Rails provide a base for ...



Solar Panel Mounting Structures: A Comprehensive Guide

Ground-mounted solar system are ideal for locations with ample land space. They're also a good solution when the roof is unsuitable for solar panels due to size, shading, orientation, or structural problems. Commercial ...

Different Types of Solar Mounting Structures

Ground mounts place solar panels on the grounds of your property. Solar Panel Frame structure shall have provision to adjust its angle of inclination to the horizontal between 10 to 40 degrees with a step of 10 ...



Comprehensive Guide for Solar Panel Mounting ...

Selecting appropriate mounting hardware is vital for solar panels' optimal performance and longevity. The suitable mounts secure the panels firmly and influence their energy absorption efficiency by positioning ...

Contact Us

For catalog requests, pricing, or partnerships, please visit:
<https://www.ssab-proiect.eu>