

European Solar and Energy Storage Solutions

Specification requirements for the edging of photovoltaic panel beams



Overview

Building code requirements related to installation, materials, wind resistance, and fire classification can help ensure the safe installation and operation of PV systems. AHJs typically require a PV system to pass a permitting and inspection process prior to com-

Building code requirements related to installation, materials, wind resistance, and fire classification can help ensure the safe installation and operation of PV systems. AHJs typically require a PV system to pass a permitting and inspection process prior to com-

the mounted aluminum framed PV panels (i.e., other PV technologies or ground mount systems), EPA recommends that an installer certified by the North American Board of Certified Energy Practitioners (NABCEP) determine the ideal system for the project's unique building environment.

Increased desire to install residential solar photovoltaic (PV) roof systems has prompted a more detailed structural capacity evaluation of residential roof structures. Permitting authorities typically default to a conservative view that residential wood roofs may not be able to carry the.

Find out how the ASCE 7 standard affects wind load, seismic load, and tornado load considerations for solar photovoltaic (PV) systems.

Understanding and addressing the fundamentals of solar panel structural requirements can help ensure the safe and effective operation of a solar energy system. Considering factors such as roof material, age, slope, bearing capacity, and local regulations can significantly contribute to a successful installation. What are solar photovoltaic design guidelines?

In addition to the IRC and IBC, the Structural Engineers Association of California (SEAOC) has published solar photovoltaic (PV) design guidelines, which provide specific recommendations for solar array installations on low-slope roofs 3.

What are the design and engineering requirements for solar panels?

These requirements vary depending on the type of installation, such as rooftop or ground-mounted systems, as well as the specific location and environmental factors. Proper design and engineering of solar panel structures must take into account several factors, such as wind loads, snow loads, and seismic forces.

What are the structural requirements for solar panels?

Structural requirements for solar panels are crucial to ensure their durability, safety, and efficient performance. These requirements vary depending on the type of installation, such as rooftop or ground-mounted systems, as well as the specific location and environmental factors.

What is a solar ready building guide?

The Solar Ready Buildings Planning Guide is designed to influence the design of new buildings to minimize solar installation costs and maximize solar production potential. It outlines the scope of consideration in two sections.

What are the requirements for a solar array mounting system?

The solar array mounting system and connection must be provided with a minimum manufacturing warranty of 10 years. The system must comply with AS/NZS 5033 and Clean Energy Council Installation guidelines.

Do you know the code requirements for a PV panel installation?

Frequently, the owner, contractor, or developer does not fully understand the code requirements to ensure the existing structural framing is not compromised by the PV panel installation. Depending on the jurisdiction and current code edition adopted, there may not be specific structural code requirements currently listed.

Specification requirements for the edging of photovoltaic panel bea

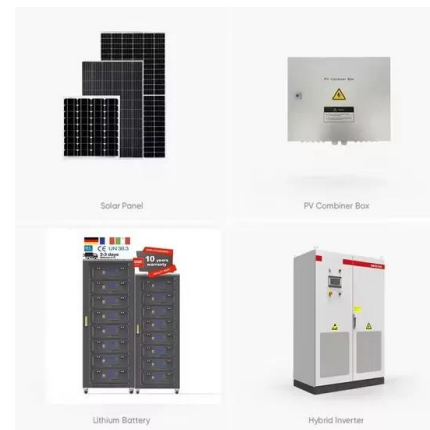


Technical Specifications for On-site Solar ...

The Federal Energy Management Program (FEMP) provides this tool to federal agencies seeking to procure solar photovoltaic (PV) systems with a customizable set of technical specifications. Select the plus sign in the rows below for more ...

This is a General Guide for Photovoltaic Plans Submittal

adjacent to panels on single ridge roofs, and panels no higher than 3' below the ridge for all roofs and 18" from any valleys. o PV modules shall not be installed over a plumbing vent, attic vent ...



Solar Photovoltaic: SPECIFICATION, CHECKLIST AND GUIDE

Increased desire to install residential solar photovoltaic (PV) roof systems has prompted a more detailed structural capacity evaluation of residential roof structures. Permitting authorities ...



Steel Beams & Tubing For Solar Farms , North Shore Steel

The round or square steel tube can be used for the based of the solar panel mount, and the steel wide flange beams or I beams are used to secure the solar panel to the mount. If your solar ...

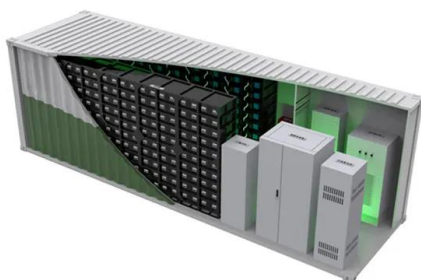


Metal Roof Solar Mounts -Solar Panel Roof ...

Attach solar panels & rails directly to standing seam metal roofs without drilling using S-5!'s PVKit 2.0. Save up to 50% on material cost & installation time! Install the first row of S-5! clamps or brackets at the edge of the array. Mount ...

Space Environment Testing of Photovoltaic Array Systems ...

performance of photovoltaic devices [2] - [4]. For spacecraft operating in environments subjected to high energy electron and proton radiation, the degradation of PV cells translates to reduced ...



TECHNICAL APPLICATION PAPER Photovoltaic plants Cutting ...

The photovoltaic cell is the most elementary photovoltaic device 1. A photovoltaic module 2 is a group of interconnected photovoltaic cells environmentally protected. The PV arrays are ...

Ground Mounted PV Solar Panel Reinforced Concrete ...

A ground mounted solar panel system is a system of solar panels that are mounted on the ground rather than on the roof of buildings. Photovoltaic solar panels absorb sunlight as a source of ...



Structural Code Considerations for Solar Rooftop ...

structurally inadequate to support the additional load associated with a photovoltaic (PV) solar installation. Typical engineering methods used to calculate stresses on a roof structure involve ...



Metal Roof Solar Mounts -Solar Panel Roof Attachments

Attach solar panels & rails directly to standing seam metal roofs without drilling using S-5!'s PVKit 2.0. Save up to 50% on material cost & installation time! Install the first row of S-5! clamps ...



Steel solutions for solar installations Your partner around the ...

Kalypso® is a support system for PV modules which are fixed on pre-painted steel sandwich panels using the innovative and patented Ondafix® fixing rail. High performance sandwich ...



(PDF) Advancements In Photovoltaic (Pv) Technology

...

Photovoltaic (PV) technology has witnessed remarkable advancements, revolutionizing solar energy generation. This article provides a comprehensive overview of the recent developments in PV



Mechanical analysis and design of large building integrated

A building integrated photovoltaic (BIPV) system generally consists of solar cells or modules that are integrated into building elements as part of the building structure (Yin et ...

Contact Us

For catalog requests, pricing, or partnerships, please visit:
<https://www.ssab-proiect.eu>