

## European Solar and Energy Storage Solutions

# Solar thermal power generation major

50KW modular power converter



#### Flexible Configuration

- Modular Design, Expanding as Required
- Small&Light, Wall Mounted
- Installed in Parallel for Expansion



#### Powerful Function

- Support PV+ESS
- Grid Support, Equipped with SVG Technology
- On-Grid and Off-Grid Operation



#### Reliable Protection

- Outdoor IP65 Design
- Sufficient Protection Functions Equipped

## Overview

---

There are three main types of concentrating solar thermal power systems: 1. Linear concentrating systems, which include parabolic troughs and linear Fresnel reflectors 2. Solar power towers 3. Solar dish/engine systems .

Linear concentrating systems collect the sun's energy using long, rectangular, curved (U-shaped) mirrors. The mirrors focus sunlight onto receivers (tubes) that run the length of the mirrors. The concentrated sunlight.

A solar power tower system uses a large field of flat, sun-tracking mirrors called heliostats to reflect and concentrate sunlight onto a receiver on the top of a tower. Sunlight can be.

Solar dish-engine systems use a mirrored dish similar to a very large satellite dish. To reduce costs, the mirrored dish is usually made up of many smaller flat mirrors formed into a dish shape. The dish-shaped surface.

Where temperatures below about 95 °C (200 °F) are sufficient, as for space heating, flat-plate collectors of the nonconcentrating type are generally used. Because of the relatively high heat losses through the glazing, flat plate collectors will not reach temperatures much above 200 °C (400 °F) even when the heat transfer fluid is stagnant. Such temperatures are too low for

What is solar thermal plant?

Solar thermal plant is one of the most interesting applications of solar energy for power generation. The plant is composed mainly of a solar collector field and a power conversion system to convert thermal energy into electricity.

What is the operating temperature of solar thermal power?

For most applications, the operating temperatures is 200 °F or less. Because the thermal energy is directly applied to heating, it can be more efficient than photovoltaic systems. Below are eight direct applications of solar thermal power that can be used today.

Why are solar thermal power plants important?

Since solar thermal power plants can feed their electricity into the power grid even after sunset, they are of particular value for an energy system based on renewable energy sources. Solar thermal power plants are of strategic importance in sunny countries to be able to phase out coal and gas power plants in the future.

How many MW are supplied by a solar thermal power plant?

Only 20 MW are supplied by the trough system of the solar thermal power plant. This power plant has almost 8,000,000 m<sup>2</sup> of solar collectors. Presently, the “combined cycle power plants” (CCPPs) are the most reliable, cost-effective, flexible, highly efficient, and environment friendly solution, for the generation of electrical energy.

What is solar thermal power generation?

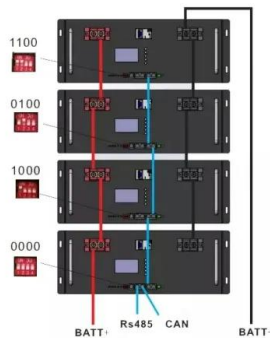
Harnessing solar energy for electric power generation is one of the growing technologies which provide a sustainable solution to the severe environmental issues such as climate change, global warming, and pollution. This chapter deals with the solar thermal power generation based on the line and point focussing solar concentrators.

What is solar thermal power used for?

Solar thermal power can be used at all scales, from residential heating applications to industrial installations. For most applications, the operating temperatures is 200 °F or less. Because the thermal energy is directly applied to heating, it can be more efficient than photovoltaic systems.

## Solar thermal power generation major

---



### Thermal Power Plants: Components & Working ...

Working Principle of a Thermal Plant. The working fluid is water and steam. This is called feed water and steam cycle. The ideal Thermodynamic Cycle to which the operation of a Thermal Power Station closely resembles is ...

### Solar thermal energy

Overview High-temperature collectors History Low-temperature heating and cooling Heat storage for space heating Medium-temperature collectors Heat collection and exchange Heat storage for electric base loads

Where temperatures below about 95 °C (200 °F) are sufficient, as for space heating, flat-plate collectors of the nonconcentrating type are generally used. Because of the relatively high heat losses through the glazing, flat plate collectors will not reach temperatures much above 200 °C (400 °F) even when the heat transfer fluid is stagnant. Such temperatures are too low for efficient conversion



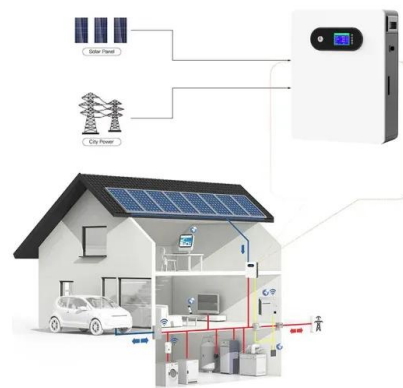
### Solar thermal energy

Roof-mounted close-coupled thermosiphon solar water heater. The first three units of Solnova in the foreground, with the two towers of the PS10 and PS20 solar power stations in the background.. Solar thermal energy (STE) is a form ...



## Solar power technology for electricity generation: ...

In addition, a comparison is made between solar thermal power plants and PV power generation plants. Based on published studies, PV-based systems are more suitable for small-scale power



## 8 Hot Applications of Solar Thermal Power

Solar thermal power can be used at all scales, from residential heating applications to industrial installations. the world, with an installed capacity of 510 MW. Heat is stored in molten salts. Another large complex is ...

## Contact Us

For catalog requests, pricing, or partnerships, please visit:  
<https://www.ssab-proiect.eu>