

# **Solar thermal power generation design point**



## Overview

---

The design point is a primary parameter in solar thermal power plant design and can be referred to when defining the area of the concentration field, thermal receiver capacity, thermal storage capa.

## Solar thermal power generation design point

---



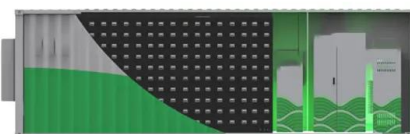
- 50KW/100KWH
- HIGHER POWER OUTPUT IN OFF-GRID MODE
- CONVENIENT OPERATION & MAINTENANCE
- PRE-WIRED

### Design of Solar Thermal Power Plants , ScienceDirect

Abstract. The design point is a primary parameter in solar thermal power plant design and can be referred to when defining the area of the concentration field, thermal receiver capacity, thermal ...

### Solar Thermal Energy Generation - Visual Encyclopedia of ...

Solar thermal energy, commonly referred to as concentrated solar power (CSP), is generated through the use of collectors. Two main types of solar concentrators are used in solar ...



### (PDF) Solar thermal power generation

A schematic diagram showing the main components of a central receiver power plant in which water is 527 Solar thermal power generation Incident solar energy  $C_e \cdot \tau$  | rece;veY ~ | Heliostats ~ Turbine Alternator @ Condenser 1 ~"~ Pump ...

### Thermal Storage System Concentrating Solar-Thermal Power ...

Two-tank direct storage was used in early parabolic trough power plants (such as Solar Electric Generating Station I) and at the Solar Two power tower in California. The trough plants used ...



### Solar parabolic dish collector for concentrated solar thermal

...

Poulliklas et al. (2010) reviewed installation of solar dish technologies in Mediterranean regions for power generation. Loni et al. reviewed solar dish concentrator performance with different ...



### High temperature central tower plants for concentrated solar power

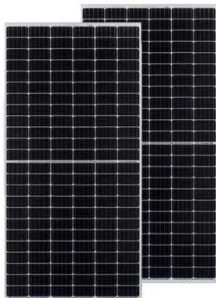
According to the 2014 technology roadmap for Solar Thermal Electricity [1], the solar thermal electricity will represent about 11% of total electricity generation by 2050. In this ...



### Solar parabolic dish collector for concentrated solar thermal

...

Keywords Parabolic dish solar concentrator · Design parameters · Solar irradiation · Receivers · Nanouids · Ray tracing Introduction Solar energy resource is one of the best alternatives to ...



## Solar power technology for electricity generation: ...

In addition, a comparison is made between solar thermal power plants and PV power generation plants. Based on published studies, PV-based systems are more suitable for small-scale power



## (PDF) Central Receivers Design in Concentrated Solar Thermal Power

After an introduction to solar thermal power plants concepts, a detailed survey of developing technologies that been done on external central receivers design, the last section ...



## Analysis and optimization of concentrated solar power plant for

After many iterations, the initial optimum solar field design power is found as shown in Table 2. It can be noticed that as the solar field design power increases, all related ...



## Contact Us

For catalog requests, pricing, or partnerships, please visit:  
<https://www.ssab-proiect.eu>