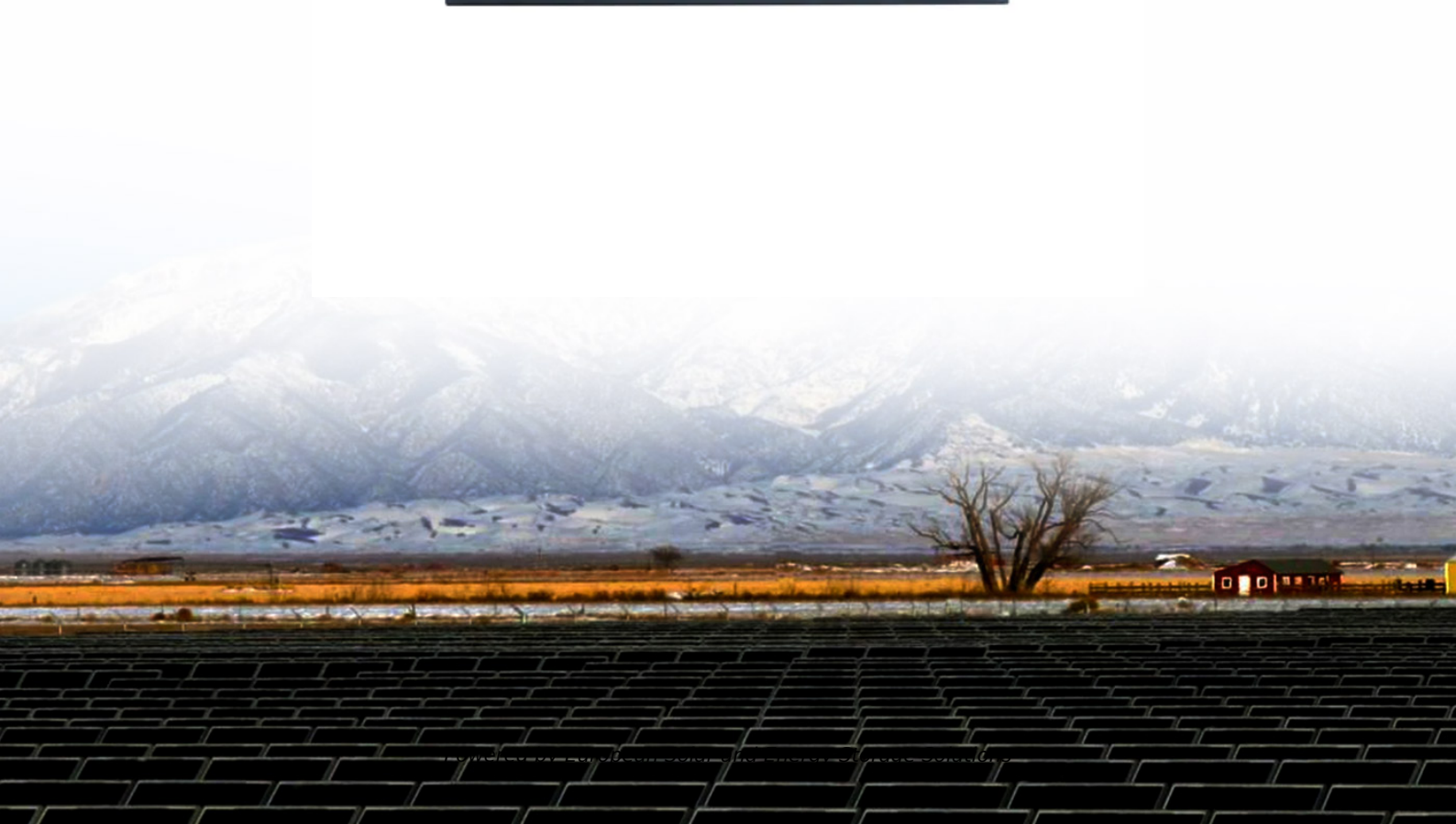


European Solar and Energy Storage Solutions

Solar power panel charging 220v home use



Overview

A solar electric car charger (SECC) is a device that uses solar energy to charge your EV. This might be a standalone solar device or a regular EV charger connected to extrasolar system equipment. An SECC system typically comprises the following components: 1. Solar panels: Made up of photovoltaic (PV).

More car firms that previously solely built gasoline-run vehicles have turned their attention to producing electric automobiles for everyday usage, with Tesla setting the pace. If you own or want.

If you are deciding to buy solar electric car charger(for instance you can choose a trickle charger for car), there are a few things to think about.

The cost of a solar home electric car charging system begins at \$499, with setup expenses ranging from \$300 to \$1,000, based on the.

How do you charge an EV with solar power?

Instead, you'll need to harvest power from sunlight with PV panels and transmit the DC electricity to a portable power station or solar inverter. You can use that power to charge your EV either by integrating it with your home circuitry, building a solar carport, or using a solar battery.

Why should you use a solar power charging home station?

A solar power charging home station is a practical choice when a wind generator or hydroelectric system cannot be installed at your house or business. It allows you to save money on gas and electricity, boost the green rating of your building, and charge electric cars using solar energy.

How do I set up a solar charging system?

To set up a functional solar charging system, you need a few essential components: a solar panel to absorb energy from the sun and convert it into electricity; a charge controller to regulate the amount of electricity flowing into the battery to prevent overcharging or undercharging; and a battery to store the electricity.

Can You charge EVs with solar panels?

Yes, but not without additional components It's currently not possible to charge EVs directly using solar panels alone. Instead, you'll need to harvest power from sunlight with PV panels and transmit the DC electricity to a portable power station or solar inverter.

What is a 220w bifacial portable solar panel?

Two in one EcoFlow's 220W Bifacial Portable Solar Panel is two in one. With a 220W primary side, and a 155W side on the back for ambient light, you can capture up to 25% more solar energy and charge your portable power station even faster.

Can I charge my EV/hybrid at home with solar power?

Charging your EV or hybrid at home with solar power has numerous benefits. Here are the highlights. Whether you use solar panels or on-grid electricity, Level 1 charging has severe limitations.

Solar power panel charging 220v home use



A Complete Guide on How to Charge a Battery from ...

To set up a functional solar charging system, you need a few essential components: a solar panel to absorb energy from the sun and convert it into electricity; a charge controller to regulate the amount of electricity flowing ...

Amazon : EF ECOFLOW 100W 12V Solar Panel, ...

Solar Cable: Please note that solar charging cable used to connect power stations is not included in individual 100W solar panel packaging. It can be purchased separately if needed for power stations solar charging. 1800W ...



Best 240V Solar Generators 2024: Top Picks, Reviews & Guide

The Hysolis Apollo 5K is one of the fastest charging solar generators. The included AC charger puts in up to 3000W of power, which charges the battery in about 110 minutes. Max solar ...

How to Use Your Solar Panels to Charge Your Electric ...

EV charging with home solar panels. \$0.08 - \$0.15 cents/kWh LCOE. Use power generated by your solar system to fully charge your EV within hours and save upwards of \$1,000 a year in fuel costs.



How To Charge Battery Using Solar Panel: A Complete Guide For ...

5 ???· A 30-degree angle often works best, but adjust it seasonally for maximum efficiency. Secure the Panel: Ensure the solar panel is stable and secure to prevent movement or ...

New EcoFlow DELTA 2 Portable Power Station , EcoFlow US

Fully charge with a 1.3 hour drive. Charge while you drive with the industry's first alternator charger innovation. With 800W turbo alternator, top up your energy storage 8 times faster than ...

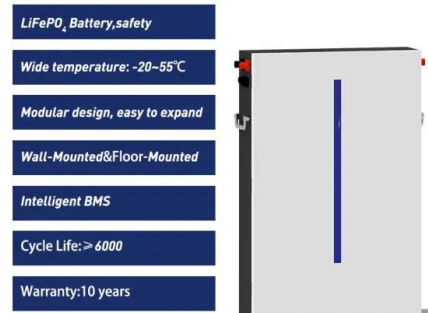


Amazon : EF ECOFLOW 100W 12V Solar Panel, High ...

Solar Cable: Please note that solar charging cable used to connect power stations is not included in individual 100W solar panel packaging. It can be purchased separately if needed for power ...

The Complete Guide to Electric Vehicle (EV) Solar Panel ...

Instead, you'll need to harvest power from sunlight with PV panels and transmit the DC electricity to a portable power station or solar inverter. You can use that power to charge your EV either by integrating it with your ...



Solar Panel Size Calculator - Charge Your Battery In Desired Hours

Use our solar panel size calculator to find out the ideal solar panel size to charge your lead acid or lithium battery of any capacity and voltage. For example, 50ah, 100ah, ...

EcoFlow 1800W Output/2700W Peak Solar Generator ...

Highlights. EcoFlow DELTA 2 solar generator: secure your power supply with an EcoFlow DELTA 2 solar generator bundle at home or on the go, plug in 220-Watt Bifacial portable solar panels and get up to 500-Watt ...



EF ECOFLOW Solar Generator DELTA2 with 220W Solar Panel, LFP ...

With up to 500W of solar panel input, DELTA 2 is a solar generator that can be charged while camping, on an RV trip or off-grid. Includes a 220W Bifacial solar panel to capture up to 25% ...



NATURE POWER 110-Watt Complete Solar Power Kit with

This kit contains 1 of our 110-Watt solar panels, a 300-Watt power inverter (Power Inverter color may vary), an 11 Amp Charge Controller, all the wiring to get you started and a BONUS 1.5 ...



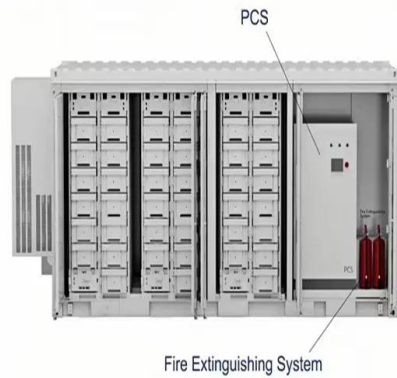
EcoFlow DELTA 2 Solar Generator (PV220W) , EcoFlow

Secure your power supply with an EcoFlow DELTA 2 solar generator bundle at home or on the go. Plug in 220W Bifacial Portable Solar Panels and get up to 500W input to charge from anywhere in as fast as 3 hours. These bundles are ...

Solar Panel Size Calculator - Charge Your Battery In ...

Use our solar panel size calculator to find out the ideal solar panel size to charge your lead acid or lithium battery of any capacity and voltage. For example, 50ah, 100ah, 200ah, 120ah. You need around 70 watts of ...





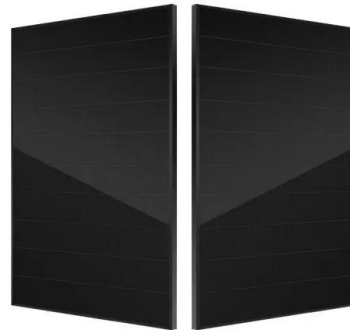
Homeowner's Guide to Going Solar , Department of Energy

A recent study found that solar panels are viewed as upgrades, just like a renovated kitchen or a finished basement, and home buyers across the country have been willing to pay a premium

...

Can you run 220V on Solar?

A power inverter is a final component needed to transform the sun's energy into power that our household appliances can use when installing a solar-powered system at home. The batteries provide 12V direct electricity ...



Contact Us

For catalog requests, pricing, or partnerships, please visit:
<https://www.ssab-proiect.eu>