

European Solar and Energy Storage Solutions

Solar power generation panel per square watt



Overview

Calculating watts per square meter (W/m) is simple: Multiply the power output of a single panel by the number of panels. Divide the total watts generated by the total panel surface area.

Calculating watts per square meter (W/m) is simple: Multiply the power output of a single panel by the number of panels. Divide the total watts generated by the total panel surface area.

Residential solar panels typically generate between 150-370 watts, with an average of 15 watts per square foot. Solar panels utilize sunlight to create electricity. But how do they achieve that feat?

.

Solar panels are rated by the amount of power they can produce in ideal conditions, typically around 1,000 watts per square meter.

Usually, the typical amount can be 1,000 watts of sunlight per square meter of the panel.

Solar power generation panel per square watt



How Much Power Do Solar Panels Produce Per Square Meter?

The average solar panel has an input rate of roughly 1000 Watts per square meter, while the majority of solar panels on the market have an input rate of around 15-20 percent. As a result,

...

Solar Panel kWh Calculator: kWh Production Per Day, ...

We will also calculate how many kWh per year do solar panels generate and how much does that save you on electricity. Example: 300W solar panels in San Francisco, California, get an average of 5.4 peak sun hours per day. That ...



How Much Power (Watts) does a Solar Panel Produce?

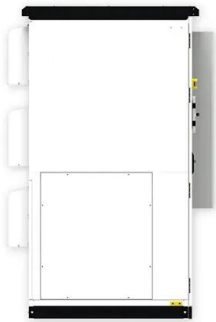
Solar panel watts per square meter (W/m) measures the power output of a solar panel based on its size. Compare solar panels to see which generates most electricity per square meter. A higher W/m value means a solar panel

...



Standard Solar Panel Sizes And Wattages (100W-500W Dimensions)

How many watts per square foot can a solar panel generate? Dividing the specified wattage by the square footage of the solar panel will give us just this result: The average solar panel ...

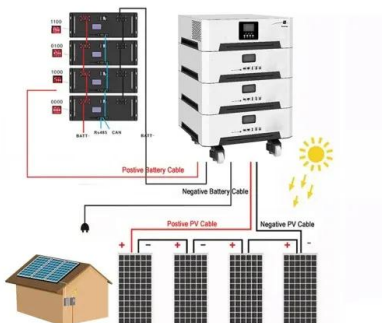


Solar Power per Square Meter Calculator

Solar Power Per Square Meter Calculator. The amount of solar intensity received by the solar panels is measured in terms of square per meter. The sunlight received per square meter is termed solar irradiance.

Most powerful solar panels 2024

In the solar world, panel efficiency has traditionally been the factor most manufacturers strived to lead. However, over the last 3 to 4 years, a new battle emerged to develop the world's most powerful solar panel, with ...



How Many kWh Does A Solar Panel Produce Per Day? Calculator ...

Here are some examples of individual solar panels: A 300-watt solar panel will produce anywhere from 0.90 to 1.35 kWh per day (at 4-6 peak sun hours locations). A 400-watt solar panel will ...

Solar Panel Output and Wattage Explained (2024 ...

A 400-watt solar panel can produce 400 watts of power under standard test conditions (STC). However, a 400W panel will rarely produce exactly 400 watts in real-world conditions. Its actual output depends on panel ...



How much energy does a solar panel produce?

On average, solar panels will produce about 2 kilowatt-hours (kWh) of electricity daily. That's worth an average of \$0.36. Most homes install around 15 solar panels, producing an average of 30 kWh of solar energy daily. ...

Solar Panel Cost in 2024: How to Estimate The Cost of Solar , Solar...

Today's premium monocrystalline solar panels typically cost between \$1 and \$1.50 per Watt, putting the price of a single 400-watt solar panel between \$400 and \$600, depending on how ...



Contact Us

For catalog requests, pricing, or partnerships, please visit:
<https://www.ssab-proiect.eu>