

## European Solar and Energy Storage Solutions

# Solar power controller light flashes 6 times



## Overview

---

A solar charge controller is an essential component of any solar power system. It typically has a series of on-screen icons and indicator lights that show the status of the system. These icons or lights will blink, flash, or display different colors to indicate different system statuses. The LED indicator can only show the status of.

Solar Charge Controller icon and lights Blinks or Flashes to indicate the operating status of the solar system components connected to the solar controller. These are the most common lights that you will see on your solar charge.

If you are experiencing blinking and flashing lights on your solar charge controller, the first step to take is to identify the specific lights that are blinking or flashing. Once you have identified the lights, you can locate the.

Remove all 4 wires from the back of the controller for 15-20 minutes, then reconnect the wires. Determine if this clears the error state. What does it mean when a solar charge controller flashes?

This indicates that the solar charge controller has successfully completed the charging process, and the battery is in good condition. On the other hand, if the battery icon is slowly flashing, it signals that the battery is losing power and needs to be charged promptly.

Why is my solar charge controller battery light blinking?

Solar charge controller battery icon flashing means that the battery is not charging properly, which may be caused by insufficient battery power, charging problem, ambient light change, controller malfunction or bad weather conditions. Solar battery light blinking yellow means the battery is charged.

What does a solar charge controller battery blinking green mean?

solar charge controller battery blinking green means the battery is fully charged and in a saturated state, A flashing red battery light means the battery is undercharged and needs to be recharged in time. Solar controller

loads are small DC devices that can be powered directly by a solar battery.

How do I know if my solar charge controller is working?

Solar Charge Controller icon and lights Blinks or Flashes to indicate the operating status of the solar system components connected to the solar controller. These are the most common lights that you will see on your solar charge controller, whether it is an MPPT solar controller or an economic PWM controller.

Why is my solar charge controller led?

This could be due to the depletion of stored energy in the battery, and timely charging is essential to ensure continuous and reliable power supply. In LED mode, the solar charge controller uses LED light indicators to display the battery charging status. When the battery is charging, the LED indicator is green and remains steadily illuminated.

How do I troubleshoot a solar controller?

If you're having issues with your Bluetooth connections, [click here to view connectivity troubleshooting](#). The solar controller requires power from the battery in order for it to operate (9-14 volts) . The first step in troubleshooting any solar controller is to determine if you have 12 volts to the controller.

## Solar power controller light flashes 6 times

---



### Solar Charge Controller Zamp ZS-30A ...

Image 1: Zamp ZS-30A Solar Charge Controller. In any case, like all electronic gadgets, it may experience issues from time to time. This step-by-step investigating direct points to assist clients distinguish and resolve ...

### Problems getting the new Schneider/Xantrex C-35 ...

The LED trouble light has never quit blinking. I thought it was a red blinking light which indicates load control mode. I am definitely in charge control mode. So the blinking light is orange indicating a "disconnected load". VmP is 42 on 24 volt ...



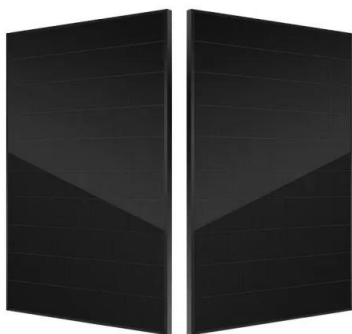
### Solar Charge Controller Guide , All You Need to Know ...

If a 100-Watt solar panel is used to power a battery, a solar charge controller is necessary. Some small solar systems include only a single 100-watt panel and a battery. These systems need solar charge controllers to ...

### Vizio TV Power Light Blinking 12,15,16 & 20 Times [Solved]

When you find your vizio tv power light blinking

12,15,16 & 20 times, do hard & factory reset or update tv firmware to fix blinking instantly. Read.  
Step 1: Using your TV ...



## **Samsung Remote Blinking Red? Don't Panic! Here's 8 Simply Fixes**

Here is how to fix Samsung remote red light flashing. If the status light on the Samsung Remote blinks red repeatedly, either your TV and remote's are no longer paired, or the batteries in your ...

## **Vizio TV Power Light Blinking 12,15,16 & 20 Times ...**

When you find your vizio tv power light blinking 12,15,16 & 20 times, do hard & factory reset or update tv firmware to fix blinking instantly. Read.  
Step 1: Using your TV on/off button or remote control, firstly, shut it off. ...



## **Contact Us**

---

For catalog requests, pricing, or partnerships, please visit:  
<https://www.ssab-proiect.eu>