

## European Solar and Energy Storage Solutions

# Single crystal 650 watt photovoltaic panel size



## Overview

---

A single residential solar panel typically has 60 PV solar cells and measures 5.4 feet by 3.25 feet (65 inches long by 39 inches wide). The panels are between 1.5 to 2 inches deep.

A single residential solar panel typically has 60 PV solar cells and measures 5.4 feet by 3.25 feet (65 inches long by 39 inches wide). The panels are between 1.5 to 2 inches deep.

650 Watt Solar panels' range of prices, dimensions, sizes, voltage output, specifications datasheets.

Solar Panel, Solar Modules, Monocrystalline Module, PV Modules PVS-K-645M PVS-K-650M PVS-K-655M PVS-K-660M PVS-K-665M PVS-K-670M PVS-K-675M PVS-K-670W Explain Model No 132PCS 210 x 210mm 670W 45001 1 Solar Panel -- Monocrystalline Solar Module WhatsApp: +86 134 3121 7430 Website: Telephone: +86 0769 8282 6010 / sales@sankopower.com.

The size and weight of solar panels vary depending on the make and model, with most residential panels measuring about 5.5 feet by 3 feet and weighing between 40 and 50 pounds. The total system size is also influenced by the output and efficiency of the panels—a system using 50-pound 450-watt panels might actually be more compact than one .

The wattage of solar panels directly affects kilowatt-hour (kWh) production, making it necessary to consider the wattage of solar panels for accurate system sizing. Check out our page to learn more about the difference between W, kW and kWh. 1kW of solar panels = 4kWh of electricity produced per day (roughly).How many solar panels are in a 20 x 330 watt solar system?

The number of solar panels x output = Solar system size 20 x 330W panels = 6,600 W or 6.6kW solar system The number of solar panels multiplied by their output determines the size of the solar system. For example, if you have 20 solar panels with a wattage of 330W each, it results in a 6,600 W or 6.6kW solar system.

How many Watts Does a solar panel produce?

The size in watts corresponds to their physical dimensions and power output. For example, 60-cell solar panels measure 99 x 167.6 cm and produce 270 to 300 watts, while 72-cell solar panels have an average output ranging between 350 and 400 watts due to the extra row cells.

What Watts Does a Sunergy solar panel have?

Note: Your Enquiry will be sent directly to Sunergy Solar. Gold Topcon Bi. Sunergy Solar Solar Panel Series MONO650W-660Wp-670 Watt -700Wp 210mm cell. Detailed profile including pictures, certification details and manufacturer PDF.

How much power does a polycrystalline solar panel produce?

A typical monocrystalline panel can achieve 20 to 23% efficiency and generate 300 to 550 watts of power, while polycrystalline panels are only 15 to 17% efficient and produce 300 to 400 watts of power.

Are monocrystalline solar panels a good choice?

Monocrystalline solar panels are the top of the line, provide the highest efficiency, and are generally considered to have the best look to them. They're also typically the most expensive option because of the way they're made - a single pure crystal of silicon is inserted into molten silicon and slowly extracted.

## Single crystal 650 watt photovoltaic panel size

---



### What Are Monocrystalline Solar Panels? , Price, Size, Weight, Vs ...

Every solar panel be it mono or poly is made by connecting solar cells in series and parallel arrangement, the standard size of a solar cell is 156 mm X 156 mm (approx. 6 inch X 6 inch). ...

### Solar Panel Size Calculator - Charge Your Battery In Desired Hours

Use our solar panel size calculator to find out the ideal solar panel size to charge your lead acid or lithium battery of any capacity and voltage. For example, 50ah, 100ah, ...



### Solar Panel Size Calculator: What Size Panel Do I Need?

Calculate what size solar panel you need to charge a lithium or lead acid battery with our free solar panel size calculator. You need a 120 watt solar panel to charge a 12V 50Ah lead acid battery from 50% depth of ...

### Solar Panel Sizes and Wattage Explained

Solar Panel Size. It focuses on maximum

electricity generation and overall capacity rather than the quantity of panels. To calculate the required system size, multiply the number of panels by the output. For example, a 6.6 ...



## Small Solar Panel: Best price for 10 to 50 watt solar ...

Small solar panel price in India. Buy 10 watt, 20 watt, 40 watt, and 50 watt solar panel online at best price in India. You can get a small monocrystalline solar panel that is pure silicon made from a single silicon crystal. It is quite efficient ...

## Complete guide to solar panel size

You'll see the size of a solar panel described by how many cells it has. 60-cell panels are usually laid out in a 6 by 10 grid and are the most popular option for home solar installations. You'll typically find that 60-cell solar panels have ...



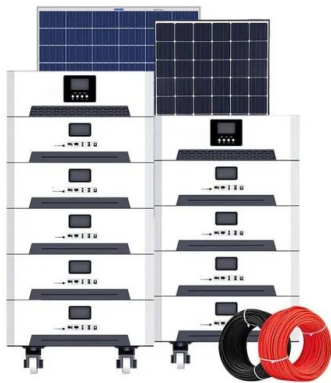
## How big are solar panels? Solar panel size and weight

The size and weight of solar panels vary depending on the make and model, with most residential panels measuring about 5.5 feet by 3 feet and weighing between 40 and 50 pounds. The total system size is also influenced ...



## Solar Panels Size & Weight (Including Commercial ...

A single residential solar panel typically has 60 PV solar cells and measures 5.4 feet by 3.25 feet (65 inches long by 39 inches wide). The panels are between 1.5 to 2 inches deep. Most 60-cell residential solar panels ...



## Small Solar Panel: Best price for 10 to 50 watt solar panel

Small solar panel price in India. Buy 10 watt, 20 watt, 40 watt, and 50 watt solar panel online at best price in India. You can get a small monocrystalline solar panel that is pure silicon made ...

## 700 Watt Solar panels for sale , Prices, dimensions, weight, ...

Solar Panel > Module by watt > 700. 700 Watt Solar panels' range of prices, dimensions, sizes, voltage output, specifications datasheets. Introducing the RS-M670-700120HG12 solar ...



## Solar Panel Price in Pakistan Today 20 November 2024

3 ???· Solar Panel Price in Pakistan Today November 20, 2024. Checkout latest Solar Plates rates of Longi, Jinko, Canadian BiFacial N-type & Ptype Longi Hi-Mo 6 565/ 575/ 570/ ...



## Solar Panel Sizes, Dimensions And Wattage

The wattage of solar panels directly affects kilowatt-hour (kWh) production, making it necessary to consider the wattage of solar panels for accurate system sizing. Check out our page to learn more about the difference ...



## A Guide to Solar Panel Dimensions

What is the Solar Panel Size in Feet? The cell layout of a 60-cell solar panel is 6×--10 (6 columns and 10 rows). The cell layout of a 72-cell solar panel is 6×--12 (6 columns and 12 rows). These panels, also called single ...

## Contact Us

---

For catalog requests, pricing, or partnerships, please visit:  
<https://www.ssab-proiect.eu>