

European Solar and Energy Storage Solutions

Single-column photovoltaic support counterweight



Overview

Are ground mounting steel frames suitable for PV solar power plant projects?

In the photovoltaic (PV) solar power plant projects, PV solar panel (SP) support structure is one of the main elements and limited numerical studies exist on PVSP ground mounting steel frames to be a research gap that has not be addressed adequately in the literature.

Which photovoltaic rack configuration is best?

(ii) The $3 V \times 8$ configuration with a tilt angle of $14 (^{\circ})$ is the best option in relation to the total energy captured by the photovoltaic plant, due to the lower width of the rack configuration and its lower tilt angle, which allows more mounting systems to be packed.

Can geospatial data be used for photovoltaic plants?

A geospatial analysis of satellite imagery of plot areas has been used for the determination of the available land areas for the installation of photovoltaic plants. An open-source geographic information system software, QGIS, has been used. This software permits the conversion, visualization and analysis of geospatial data.

Are solar panel support configurations feasible in closed sanitary landfills?

Objective: To analyze the structural feasibility of solar panel support configurations in closed sanitary landfills for better use of these spaces, thus increasing the country's capacity to generate renewable energy in areas where the affectation of ecosystems is low or null.

What is the role of geotechnical consultant in solar MMS footing design?

The role of geotechnical consultant is utmost important in the solar MMS footing design. The geotechnical consultant can modify the required footing design. A Pad footing design must not be advocated for solar MMS, still many people are using the pad footing design.

Why is structural stability important in solar PV MMS?

Structural stability is a top priority issue in the solar PV MMS. The wind force is the prime force acting on the ground-mounted solar PV MMS. The consideration of the inappropriate wind force magnitude for the design of the solar PV MMS is the main cause of the failure of these structures.

Single-column photovoltaic support counterweight

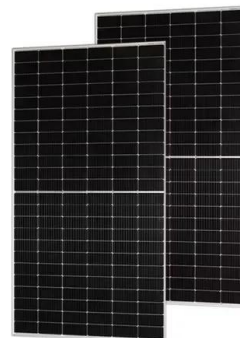


????????????????, Single Column Bracket System

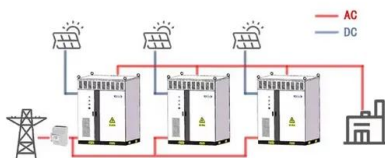
????????????????????????????????Single Column Bracket System??
????????????????????????????????????PDF??

Research and Design of Fixed Photovoltaic Support ...

The results show that: (1) according to the general requirements of 4 rows and 5 columns fixed photovoltaic support, the typical permanent load of the PV support is 4679.4 N, the wind load being 1



WORKING PRINCIPLE



Design Method of Primary Structures of a Cost ...

Cable-supported photovoltaic systems (CSPs) are a new technology for supporting structures that have broad application prospects owing to their cost-effectiveness, light weight, large span, high headroom, few pile ...

Isolated footing foundation: Column footing Design & Types

An isolated footing is one of the most used types

of foundation to support single columns when they are arranged at a long distance. An isolated footing must be designed to avoid exceeding ...



Design and Analysis of Steel Support Structures Used in ...

photovoltaic (PV) solar power plant projects, PV solar panel (SP) support structure is one of the main elements and limited numerical studies exist on PVSP ground mounting steel frames to ...

China Single Pile Fixed Support Manufacturer and ...

A single column fixed PV support is a type of support structure used for installing photovoltaic (PV) power systems. It typically consists of a vertical column with a foundation at the bottom to withstand the weight of the photovoltaic support ...



Dalian Yifeng Photovoltaic Equipment Co., Ltd-PV support-PV ...

The company can provide customers with services from R& D, design to system integration of photovoltaic support. Double column fixed support EFD series Details >> Single column fixed ...



Optimal design and cost analysis of single-axis tracking photovoltaic ...

Obviously, dual-axis tracker systems show the best results. In [2], solar resources were analysed for all types of tracking systems at 39 sites in the northern hemisphere covering ...



Research and Design of Fixed Photovoltaic Support Structure ...

The results show that: (1) according to the general requirements of 4 rows and 5 columns fixed photovoltaic support, the typical permanent load of the PV support is 4679.4 N, the wind load ...

China Single Pile Fixed Support Manufacturer and Supplier

A single column fixed PV support is a type of support structure used for installing photovoltaic (PV) power systems. It typically consists of a vertical column with a foundation at the bottom to ...



48V 100Ah

????????????, Single Column PV Mounting System

Single Column PV Mounting System ??????????? ?
?: ?? ¥0.362 / Wp . ?? ¥5,790 / 40 ??? . ?? : ???
????? ?? : ??????????? ?????? ...



DESIGN AND DEVELOPMENT OF SUPPORT STRUCTURE ...

3.1 Important considerations of solar PV systems that must be kept in mind. 1. Sizing the solar PV system 2. Solar insolation at your location 3. Panel efficiency& Panel cost - How much area is ...

ANALYSIS OF SOLAR PANEL SUPPORT STRUCTURES

support structure rest on three rollers in a circular guide. In this way it can be rotated around the vertical axis. Calculations were carried out for several angles for both horizontal and vertical ...



Contact Us

For catalog requests, pricing, or partnerships, please visit:
<https://www.ssab-proiect.eu>