

European Solar and Energy Storage Solutions

Should photovoltaic panels be pointed towards the sun



Overview

When installing photovoltaic solar panels for maximum energy production and efficiency, the optimal direction they should face is true geographic south if you are located in the northern hemisphere.

When installing photovoltaic solar panels for maximum energy production and efficiency, the optimal direction they should face is true geographic south if you are located in the northern hemisphere.

To enable this interaction, it's generally wise to point solar panels perpendicular to the sun's rays. However, unlike direction, tilt angle varies depending on the seasons.

In general, solar panels should be installed to where the sunlight hits them at as close to a perpendicular 90-degree angle for as long as possible during the day.

For maximum output, the sweet spot for solar panels in the continental U.S. is facing roughly south and tilted between 15 and 40 degrees, according to the Department of Energy.

Just as a sunflower tilts its head to catch the sun's rays, your solar panel needs to be angled just right to catch the sun's energy. The better the angle, the more power you get. Which direction should photovoltaic solar panels face?

For maximum energy production and efficiency when installing photovoltaic solar panels, they should face true geographic south if you are located in the northern hemisphere. By orienting panels to true south, the solar array will receive the highest amount of direct sunlight throughout the day and year.

What is the Best Direction and angle for solar panels?

What's the best direction and angle for solar panels?

For maximum output, the sweet spot for solar panels in the continental U.S. is

facing roughly south and tilted between 15 and 40 degrees, according to the Department of Energy.

Does the angle of solar panels matter?

The angle and direction of rooftop solar panels can impact how well the panels work. Sunlight has to hit solar panels for those panels to turn energy into electricity. As simple as it sounds, that means the angle of your solar panels matters a lot. The problem is that the sun doesn't stay in the same part of the sky all day.

What angle should solar panels be tilted?

The optimal tilt angle for solar panels to maximize solar collection depends on the season and hemisphere. During winter in the northern hemisphere, the sun follows a lower arc across the southern sky, so tilting panels at a steeper angle than the latitude can help capture more sunlight on short winter days.

How do photovoltaic solar panels work?

Photovoltaic solar panels work by absorbing sunlight to create electrical charges, which can be turned into electricity. This all starts with the panels collecting solar radiation. This comes primarily from the sun directly, but can also come from sunlight reflected from surrounding areas.

Do solar panels convert sunlight into energy efficiently?

Solar panels can only convert sunlight into energy efficiently when they are pointed in the optimal direction. Properly positioning solar panel orientation is key to maximizing productivity over the life of a photovoltaic system.

Should photovoltaic panels be pointed towards the sun



Point Your Solar Panels in the Right Direction for the Most Power

Best solar panel direction overall. South is the best direction for solar panels to face overall. In nearly all situations, you will see the greatest utility bill savings and quickest payback period if ...

Maximize Efficiency: Best Direction for Solar Panels

Best direction for solar panels. If you live in North America, the best direction for solar panels is facing south 1. Situated north of the equator (which puts the sun on the south side of houses), homeowners have the best ...



What is a solar tracker? Advantages and ...

The solar panel is raised or lowered (usually manually twice a year) towards the horizon so that the angle to the ground is the most optimal depending on the season. Y axis trackers. Y-axis trackers aim to follow the ...

Sun Direction Maps: Your Guide to Optimal Solar Panel

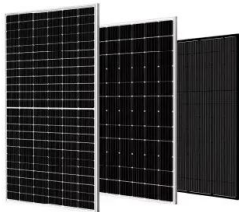
...

Sun Direction Maps: Essential tools that show the Sun's path across the sky, helping optimize solar panel placement for maximum efficiency. Reading the Map: Key elements include azimuth angle (compass direction) ...



Best Direction and Angle for Solar Panels [Maximum Output Tips]

The inclination of your solar panel installation will be slightly different based on where you live, but it should typically always face as directly towards the sun as possible. As ...



Calculate Your Optimal Solar Panel Tilt Angle

Boost your solar panel's efficacy with our comprehensive guide. Calculate the optimal tilt angle based on empirical data, dispel common myths, and understand how location impacts solar energy output. Latitude might exhibit comparable ...



Solar Panel Direction: what direction should solar panels face?

The optimum place to install solar panels usually depends on the position, inclination and its orientation towards the sun. Solar panel direction during Summer and Winter. Recent study ...



Which Direction Solar Panels Should Face in South Africa

The closer a solar panel is located to the equator, the more it should point straight up towards the sky. This allows for optimal sunlight capture, as the sun's rays are at a more vertical angle to the surface. Conversely, if a ...



Which Is More Important: Solar Panel Orientation or ...

While your solar panel angle is important, the biggest factor to determine your energy production is the direction your panels face. For the best results, solar panels should be aligned towards the south (since we live in the ...

Best Direction and Angle for Solar Panels (Tips to ...

For homeowners who live in the Northern Hemisphere, the rule of thumb is that solar panels should be oriented toward true south. (For those in the Southern Hemisphere, solar panels should be oriented toward true north.) ...



Which Direction Should Solar Panels Face for Optimal Efficiency?

Optimizing solar panel orientation is crucial for maximizing energy production; this article examines the factors determining the best direction for solar panel installation. and true ...



Solar Tracking System: Working, Types, Pros, and Cons

Parameters: Type 1: Type 2: Working: Passive tracking devices use natural heat from the sun to move panels.: Active tracking devices adjust solar panels by evaluating sunlight and finding the best position: Open Loop ...



Which Direction Should Your Solar Panels Face?

Solar Panel Tilt. The other type of solar panel direction you need to consider is the tilt angle. Tilt angle refers to the angle from the ground at which the solar panels are tilted, where 0° is lying ...

What Is the Best Direction for Solar Panels to Face? My Findings

By matching the solar panel tilt to your specific latitude, the panels are angled closer to perpendicular as the sun crosses the sky over the course of the year. For example, in ...



What is the Best Angle for Solar Panels? Maximizing ...

However, solar panel orientation is also influenced by the system's tilt angle and tracking capabilities. For fixed-tilt arrays, a slightly east or west orientation bias can actually increase summer energy harvest in the ...

What Is the Best Direction for Solar Panels to Face? My ...

The optimal solar panel direction and tilt depends primarily on geographic location and sun path, while avoiding obstructions that could cause shading. Tracking mounts can help maximize productivity but proper fixed ...



Directing Sunshine: Optimizing Solar Panel Orientation for Indian

Unlock the full potential of solar energy in India with expert guidelines on the ideal solar panel direction for maximum efficiency and sustainability. Turning motorized ...

What's the Best Angle for Solar Panels? , EnergySage

For maximum output, the sweet spot for solar panels in the continental U.S. is facing roughly south and tilted between 15 and 40 degrees, according to the Department of Energy. That keeps the panels in the sun ...



Contact Us

For catalog requests, pricing, or partnerships, please visit:
<https://www.ssab-proiect.eu>