

## European Solar and Energy Storage Solutions

# Replace the positive and negative terminals of photovoltaic panels



## Overview

---

The article explains how to determine the positive and negative terminals of a solar panel, crucial for proper installation to avoid energy wastage. Methods include examining the diode and using a voltmeter to measure voltage. It also discusses checking solar panel polarity and fixing reverse polarity issues.

The polarity of the solar panel is a crucial factor to consider during installation. If your system is not configured properly, you could end up wasting energy and have to buy more power.

Struggling to understand how solar + storage systems actually work?

Looking to build or buy your own solar power system one day but not sure what you need?

Just looking to learn more.

Most modern high-power solar modules are made with wire leads that have MC4 connectors on the ends. They use these MC4 connectors because they make the process of wiring your solar array much simpler and faster. So.

The article explains how to determine the positive and negative terminals of a solar panel, crucial for proper installation to avoid energy wastage. Methods include examining the diode and using a voltmeter to measure voltage. It also discusses checking solar panel polarity and fixing reverse polarity issues.

The article explains how to determine the positive and negative terminals of a solar panel, crucial for proper installation to avoid energy wastage. Methods include examining the diode and using a voltmeter to measure voltage. It also discusses checking solar panel polarity and fixing reverse polarity issues.

Connect the positive (+) terminal of one solar panel to the negative (-) terminal of the adjacent panel using a cable with male and female MC4 connectors. You can check our last blog on how to identify the positive and negative connectors to ensure you connect them correctly.

Wiring solar panels in series requires connecting the positive terminal of a module to the negative of the next one, increasing the voltage. To do this,

follow the next steps: Connect the female MC4 plug (negative) to the male MC4 plug (positive).

Plug the positive connector of the first solar panel module into the negative connector of the next PV module. Similarly, plug the negative connector of the first solar panel module into the positive connector of the last one.

Series connections require you to wire the positive and negative terminals of each panel together in a chain. The voltage of each panel accumulates to produce the total output, but the wattage and amperage stay the same.

## Replace the positive and negative terminals of photovoltaic panels

---



### The Ultimate Guide to MC4 Connectors , Solar Panel ...

Connect the positive (+) terminal of one solar panel to the negative (-) terminal of the adjacent panel using a cable with male and female MC4 connectors. You can check our last blog on how to identify the positive ...

### A Comprehensive Guide to Combiner Boxes in Photovoltaic ...

These terminals are designed to accommodate the positive and negative wires from each panel. Surge Protection Devices Given that solar installations are exposed to the outdoors, combiner ...



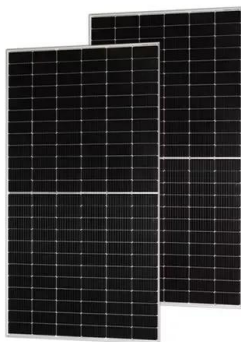
### How to Check Solar Panel Polarity (Reverses + Fixes)

Another way to determine reverse polarity on solar panels is by checking for open circuits. If your PV modules are wired correctly (positive/negative leads connected), you should not have any open circuit ...

### Everything You Need To Know About Solar Panel ...

Wiring solar panels in parallel means connecting

the positive terminal of one panel to the positive terminal of another, and then the negative terminals together as well. These connections are made in a combiner box, and the results of ...



## How to find positive and negative on a solar panel?

To use a multimeter to find the positive and negative terminals of a solar panel, follow these steps: 1. Set the multimeter to the DC voltage setting. 2. Touch the red lead of the multimeter to the positive terminal of the ...

## How to Wire a Solar Charge Controller: Step-by-Step Installation ...

Step 9: Identifying the PV Array Terminals. These will be labeled as 'PV Array', 'Solar Panels', or 'Panel'. Again, pay close attention to the indicated polarities. Step 10: ...



## Solar Panel Connectors Guide , All You Need to Know

To install solar panel connectors in series, start by laying out your panels in the order you want them connected. Next, connect the first panel's negative wire to the second panel's positive wire. Repeat this step until all ...

## Solar Simplified: Easy-to-Understand Guide to Voltage, Amperage ...

To check if your solar panel is producing the correct voltage and amperage, use a multimeter like this (click to view on Amazon). Measure the voltage by placing the multimeter ...



## Connecting Photovoltaic Panels Methods and Best Practices

Parallel connection of photovoltaic panels is a method in which all the positive terminals of the panels are connected together, just like all the negative terminals. This type of connection is ...

## The Ultimate Guide to MC4 Connectors: Role, ...

Connect the positive (+) terminal of one solar panel to the negative (-) terminal of the adjacent panel using a cable with male and female MC4 connectors. You can check our last blog on how to identify the positive ...



## Solar Panel Connectors Guide , All You Need to Know

In this part, we'll introduce how to lock and unlock a solar panel connector, crimp it, and install it in series and parallel for optimal results. Locking and Unlocking Solar Panel Connectors. The solar panel connector has a ...



## What Are The Different Types Of Solar Panel ...

Solar panel connectors are crucial items in the solar panel to the solar charge controller, into the solar inverter, and then power every appliance at the home (from refrigerators to air con units). The solar connector plugged ...



## Contact Us

---

For catalog requests, pricing, or partnerships, please visit:  
<https://www.ssab-proiect.eu>