

European Solar and Energy Storage Solutions

Photovoltaic walkway grid plate size standard



Photovoltaic walkway grid plate size standard

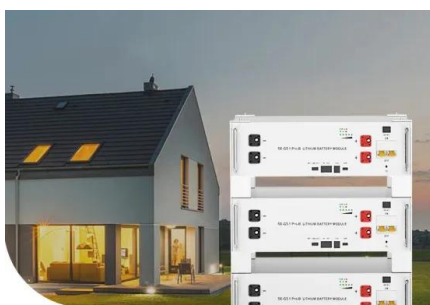


TECHNICAL REFERENCE Floating photovoltaic power plants ...

Figure 4 - PV array example using a PCE with multiple MPPT d.c. inputs 18
Figure 5 - PV array example using a PCE with multiple d.c. inputs internally connected to a common d.c. bus 19
Figure 6 - ...

Vital Engineering & Angus McLeod , Vitagrid Steel Gratings

The basic structure of Vitaplate is Vitagrid open steel grating with load bearing bars with transverse bars pressure forged at 100mm centres and a surface plate of 3mm vastrap pattern ...



Low Voltage
Lithium Battery

6000+ Cycle Life

The World's First Walkable Renewable-Energy Generating Photovoltaic

The total installed capacity is 405 Wp -- sufficient to power the 450 LED lights backlighting the walkway. This patented solution fulfills the highest technical standards. It ...

Maintenance of solar PV systems according to the IEC

...

It sets standards for how system designers and installers of grid-connected PV systems must provide information and documentation to customers. This standard also describes DC testing of the PV system, which can also be used ...



Guidelines on Rooftop Solar PV Installation for Solar Service

IEC 61727, 2nd Ed. (2004) Photovoltaic (PV) systems - Characteristics of the utility interface
IEC 62116, 2nd Ed. (2014-02), Utility-interconnected photovoltaic inverters - Test procedure for ...

Grid-Connected Solar Photovoltaic (PV) System

Most PV systems are grid-tied systems that work in conjunction with the power supplied by the electric company. A grid-tied solar system has a special inverter that can receive power from the grid or send grid-quality AC power to the ...

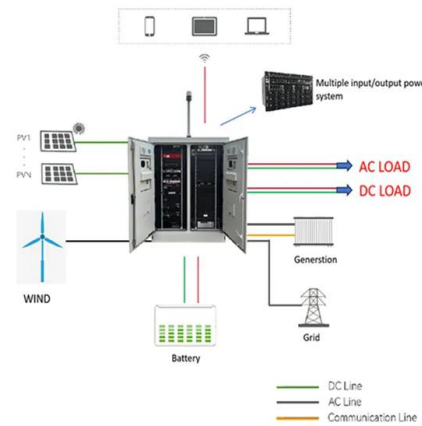


Solar Photovoltaic: SPECIFICATION, CHECKLIST AND GUIDE

As a point of reference, the average size of a grid-tied PV residential system installation in the United States has increased to just over 5.0 kilowatts. DC. as of 2009, which efficiency, ...

Solar Panel Sizes (Energy Use & Dimensions Guide)

Solar Module Size. The standard module size for residential types is about 5.4 feet by 3.25 feet or 65 by 39 inches on average with each module containing solar cells, but commercial PV modules are a bit larger. On average, the standard ...



Solar PV Sidewalks: A pedestrian's guide to grid ...

The universe of novel lamppost and sidewalk-mounted solar PV solutions appears to be dominated by more busts than success stories. However, one Canadian company that recently deployed a 323-foot stretch of ...

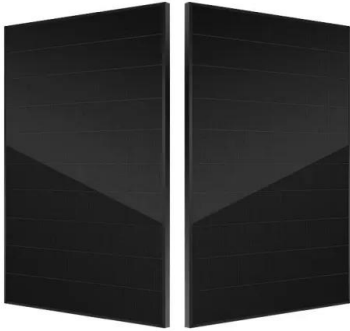
Standing Seam Metal Roof Walkway , R& S Manufacturing and Sales

GrateSafe® Standing Seam Metal Roof Walkways
CSI Division 07-7246 Safe Rooftop Walk Products & Handrail. GrateSafe® Standing Seam Metal Roof Walkways provide safe access ...



Standard Steel Grating - Large Sizes for Flooring, Platform & Walkways

Standard Steel Grating - Custom Sizes & Loads. Standard steel grating, commonly refers to welded steel grating in large sizes. Easy fabrication and high loads structure is widely used as ...



Contact Us

For catalog requests, pricing, or partnerships, please visit:
<https://www.ssab-proiect.eu>