

## European Solar and Energy Storage Solutions

# Photovoltaic solar panel standard size diagram



## Overview

---

What size solar panels do I Need?

60-cell solar panels are the standard solar panel size for homes. They are usually 5.5 feet by 3 feet and weigh around 40 pounds. 72- cell panels are bigger, measuring around 6.5 feet by 3 feet, weigh about 50 pounds, and are typically considered commercial solar panels.

How much do solar panels weigh?

Most solar panels are a little over 5 feet by 3 feet and weigh 40-45 pounds, but size varies by manufacturer. In this guide, we'll unpack solar panel size in greater detail, helping you determine how large of a system your property can accommodate before you purchase your panels.

How big are solar panels?

Residential solar panels consist of around 60 solar cells and are roughly 5.5 feet long and 3 feet wide. Solar panels usually weigh about 40 to 50 pounds. Commercial solar panels are generally larger than residential solar panels at 6.5 feet by 3 feet.

How do you calculate a solar system size?

To calculate the required system size, multiply the number of panels by the output. For example, a 6.6 kW solar system typically consists of 20 panels each delivering 330W of power. Solar Panel Wattage Divide the average daily wattage usage by the average sunlight hours to measure solar panel wattage.

What is a solar panel size calculator?

Their solar panel size calculator tool makes it easier to determine the best PV system for your home by collecting household data and system preferences. Solar Calculator provides useful data by estimating storage requirements and surplus energy availability.

What is the standard size of a solar PV cell?

Depending on manufacturer and type, these dimensions are usually available in millimetres which can be easily converted to centimetres or meters. For example, a standard PV cell's dimensions in length and breadth are 156 mm respectively =  $156/10 = 15.6$  cm. Thus, the standard size of a solar PV cell is approximately 15.6 cm by 15.6 cm.

## Photovoltaic solar panel standard size diagram

---



### The Ultimate Guide to Transformer for Solar Power ...

Medium-sized solar power systems - with an installed capacity greater than 1 MWp and less than or equal to 30 MWp, the generation bus voltage is suitable for a voltage level of 10 to 35 k V. Large solar power systems - with an installed ...

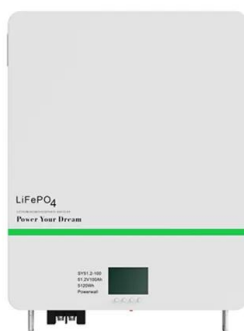
### How big are solar panels? Solar panel size and weight

The size and weight of solar panels vary depending on the make and model, with most residential panels measuring about 5.5 feet by 3 feet and weighing between 40 and 50 pounds. The total system size is also influenced ...



### Understanding Solar Panel Diagrams: A Detailed

Solar Panel Diagram with Explanation PDF. A solar panel diagram with explanation PDF provides a detailed visual representation of how solar panels work and generate electricity from sunlight. The diagram typically includes the ...



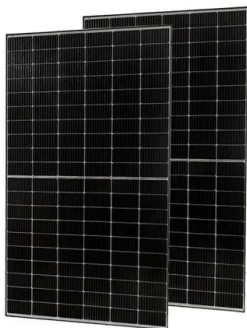
### 12V Solar Panel Wiring Diagram: Step-by-Step Installation Guide

Learn how to wire a 12V solar panel system with this straightforward wiring diagram and step-by-step guide. Wiring a 12V solar panel typically involves connecting the positive and negative ...



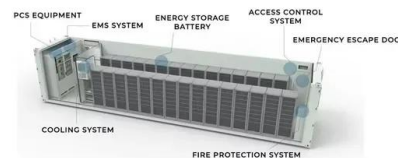
## Design Selection and Installation of Solar water Pumping ...

A solar water pump manufacture/supplier will have tables or computer software which specify the flow from the solar water pumping system for various heads and solar irradiation. The "solar ...



## Complete guide to solar panel size

60-cell solar panels are the standard solar panel size for homes. They are usually 5.5 feet by 3 feet and weigh around 40 pounds. 72- cell panels are bigger, measuring around 6.5 feet by 3 feet, weigh about 50 pounds, and are typically ...



## Solar panel wiring basics: How to wire solar panels

However, as a solar professional, it's still important to have an understanding of the rules that guide string sizing. Solar panel wiring is a complicated topic and we won't delve into all of the ...



## Solar Panel Dimensions and Output and Weight

Number of solar panels x output = Solar system size . Example: 20 x 330W panels = 6,600 W or 6.6kW solar system. What's the size of a 250W solar panel? The size of solar varies depending on the manufacturer. ...



## Solar Panel Size & Weight Guide [+ Charts] - Solartap

In this guide, we'll unpack solar panel size in greater detail, helping you determine how large of a system your property can accommodate before you purchase your panels. Average Solar Panel Dimensions. Standard ...

## Understanding the Components of a Typical Solar Power System: ...

The main component of a solar power system is the solar panels, also known as photovoltaic (PV) panels. These panels are made up of multiple solar cells that are interconnected and encased ...



## Solar Panel Sizes and Wattage Explained

Best Solar Panel Sizes and Wattage Calculator. This curated list includes top-brand calculators for determining panel size, output and battery capacity for your system along with wattage estimates for monthly and yearly ...



## The Ultimate Guide to Transformer for Solar Power Plant

Medium-sized solar power systems - with an installed capacity greater than 1 MWp and less than or equal to 30 MWp, the generation bus voltage is suitable for a voltage level of 10 to 35 k V. ...



## What Are the Common Solar Panel Sizes?

Standard Solar Panel Dimensions. Solar panels are available in several standard sizes, with the most common being 60-cell and 72-cell configurations. These dimensions are based on the number and arrangement ...



## Guide to Solar Energy Diagrams: From Wiring to System Layouts

Single-line diagrams are simplified illustrations of the electrical connections in a solar power system, showing how electricity flows from the solar panels to the inverter and the main ...



## Stand-Alone Photovoltaic (PV) Solar System: Components, Configuration, Cost

Figure 2 Block Diagrams of Typical Stand-Alone PV Systems. The systems here are representative of different types; other configurations are possible. Stand-Alone Solar PV

...

## Solar Panel Sizes, Dimensions & Weight

Standard residential solar panels contain 60 solar cells (or 120 half-cut solar cells) and typically generate anywhere from 350W to 500W of electricity. The size of these panels can range from 1.6m tall x 1.0m wide, to ...



## Contact Us

---

For catalog requests, pricing, or partnerships, please visit:  
<https://www.ssab-proiect.eu>