

European Solar and Energy Storage Solutions

Photovoltaic roof support height



Overview

Most rooftops in the United States are built up from plywood and finished with asphalt shingles. However, depending on your region and neighborhood aesthetic, the top layer of the roofing.

In South Florida, the local building code requires some rooftop solar systems within a mile of the ocean to be able to withstand uplift generated by winds greater than 180 miles per.

Now that we've covered the basics of connecting solar panels to a roof, it's time to find a place for the panels. The most obvious feature we're.

Solar panels should be mounted at a height of 3.75" to 5.25" from the roof's surface to ensure optimal performance.

Solar panels should be mounted at a height of 3.75" to 5.25" from the roof's surface to ensure optimal performance.

The roof rises seven inches over a horizontal run of 12 inches. A steeper angle (greater than 45 degrees) will slightly affect the energy production of your panel. What is a good roof angle for solar panels?

In the Northern Hemisphere, a south-facing roof pitched between 30 and 45 degrees is considered ideal for solar panels. Your roof should be in good condition and able to support the additional weight. You should also identify obstructions, such as nearby trees or buildings, that could cast shadows on your panels.

Do solar panels need a roof?

Solar panels require a sturdy and reliable foundation to function optimally. One of the primary considerations for solar panel installation is the roof's structural integrity, which is typically the critical support structure for the panels.

Which roof is best for installing solar panels?

Standing metal roofs are the most suitable for installing solar panels. They are

durable and provide a secure base, allowing installations to be made without drilling them. Each residential solar panel is approximately 3×5 feet, meaning each panel occupies around 15 square feet.

Is there a minimum roof age for solar panel installation?

While there is no strict minimum roof age for solar panel installation, newer roofs built with modern materials and properly maintained are generally better candidates.

How do I calculate the structural load of solar panels on a roof?

To calculate the structural load of solar panels on a roof, several factors must be considered, including the number and weight of the panels, the weight of the mounting system and components, and any additional loads from wind, snow, or seismic events.

Do solar panels need roof reinforcements?

Roof reinforcements may be necessary for some installations, depending on factors such as the roof's strength, the weight of the solar system, and local building code requirements. A structural engineer can evaluate the roof's condition and determine whether reinforcements are needed to support the additional load of the solar panels.

Photovoltaic roof support height



Sizing Solar Structure Components in Solar Panel ...

One of the most important ways to combat climate change and the global energy issue is by promoting the use of solar energy. About 80% of the energy required to heat indoor spaces and water can be replaced by solar ...

Best Practice: Solar Roof Mounting System Design and ...

Solar roof mounting systems are the backbone of rooftop solar installations. They are the critical components that secure solar panels to roofs, ensuring stability and performance while withstanding environmental ...



The Australian Solar Mounting Systems Guide

Most Australian homes have a roof pitch of 20 - 30°, according to the CEC's guidelines; if a roof slope is not ideal, a mounting frame can correct the orientation and elevation of panels. On flat ...

Structural Requirements for Solar Panels -- Exactus ...

The foremost requirement is the structural

strength of the roof, which should be capable of supporting the additional weight of the solar panels and the mounting structure. The solar panel mounting structure is usually ...



Rules for Rooftop Solar

The size of the path along the ridge depends on how much of the roof is covered in PV panels. For roofs where PV panels cover up to 33% of the total area in plan view (essentially, as seen from above), the panels must be at least 18 in. ...

Solar Panel Roof Requirements For Installation (2023 ...

Check out our official 2022 guide for solar panel roof requirements! Wondering what the roof requirements are to get solar panels? Check out our official 2022 guide for solar panel roof requirements! Your ...



Rules for Rooftop Solar

The Uniform Solar Energy Code was published in the 1970s. can be cut down from the minimum height of 6 in. to a height of only 2 in. above the roof. The vent opening must communicate with outside air over an area no less than the area ...

Solar Panel Roof Requirements For Installation (2023 ...

In most cases, the ideal roof incline for solar installation is 30 degrees. In construction terms, this is a 7-pitch roof. The roof rises seven inches over a horizontal run of 12 inches. A steeper angle (greater than 45 degrees) ...



Roof-Mounted Solar PV Panels - Part 1: Structural ...

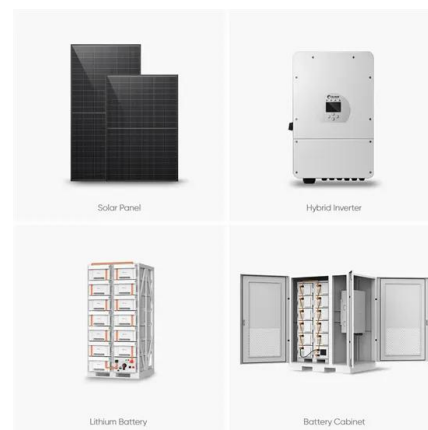
With the recent exponential growth in renewable energy technologies and installations, VERTEX has seen a steady increase in consultation for roof-mounted photovoltaic (PV) panels on both residential and commercial projects.



Application scenarios of energy storage battery products

Wind Load and Wind-Induced Vibration of ...

(1) Background: As environmental issues gain more attention, switching from conventional energy has become a recurring theme. This has led to the widespread development of photovoltaic (PV) power generation ...



Best practices for roof-mounted photovoltaic systems

The roof deck/roof supports should be inspected and analyzed to ensure they can handle the additional load of the PV system plus expected snow/ice load, hail size and wind speeds. Also, the system design should ...



How To Install Solar Panels on a Roof

The first step in planning your solar panel installation is to evaluate your roof's condition and suitability. In the Northern Hemisphere, a south-facing roof pitched between 30 and 45 degrees is considered ideal for ...



Contact Us

For catalog requests, pricing, or partnerships, please visit:
<https://www.ssab-proiect.eu>