

European Solar and Energy Storage Solutions

Photovoltaic pipe pile support size



Overview

It demonstrates that the careful selection of pile diameter and rock-socketed depth is crucial for enhancing the horizontal bearing capacity of piles. This also provides data support for the selection of pile foundations in other offshore engineering projects.

It demonstrates that the careful selection of pile diameter and rock-socketed depth is crucial for enhancing the horizontal bearing capacity of piles. This also provides data support for the selection of pile foundations in other offshore engineering projects.

To study the frost jacking performance of photovoltaic support steel pipe screw pile foundations in seasonally frozen soil areas at high latitudes and low altitudes and prevent excessive frost jacking displacement, this study determines the best geometric parameters of screw piles through in situ tests and simulation methods.

The PHC (pre-stressed high-strength concrete) pile foundation, serving as an innovative supporting structure for solar power stations, is subjected to complex loading conditions in engineering scenarios. In this study, field tests of the full-scale PHC Pile foundation were conducted in sand layer, loess layer, and double-layer sites to .

Our idea is pretty simple: subtract one pound of steel per foot length from every pile used to support a solar photovoltaic panel. The impact?

Significant. Photovoltaic facilities average 500 steel piles per megawatt, and projects with more than 100,000 steel piles aren't uncommon.

As the demand for renewable energy increases—solar farms are becoming an ideal market for pile driving contractors due to the need for stable, long-lasting foundations that can support large-scale solar installations. What are the different types of photovoltaic support foundations?

The common forms of photovoltaic support foundations include concrete independent foundations, concrete strip foundations, concrete cast-in-place

piles, prestressed high-strength concrete (PHC piles), steel piles and steel pipe screw piles. The first three are cast-in situ piles, and the last three are precast piles.

Can photovoltaic support steel pipe screw piles survive frost jacking?

To study the frost jacking performance of photovoltaic support steel pipe screw pile foundations in seasonally frozen soil areas at high latitudes and low altitudes and prevent excessive frost jacking displacement, this study determines the best geometric parameters of screw piles through in situ tests and simulation methods.

Is a PHC pile foundation a reliable support structure for heliostats?

A comprehensive design program is proposed based on field tests and numerical simulations, considering deformation and bearing capacity. The study confirms the reliability of the PHC pile foundation as a support structure for heliostats, aiming to offer valuable insights for practical applications.

What are steel pipe screw piles?

Among them, steel pipe screw piles are widely used in photovoltaic support foundation projects in various countries and Western China (Zarrabi and Eslami, 2016, Chen et al., 2018) because they have simple and fast construction, less noise and vibration and can be reused (Livneh and El Naggar, 2008, Aydin et al., 2011, Mohajerani et al., 2016).

How do I choose a pile for a solar farm?

The load-bearing capacity needed for the solar farm is another critical factor in selecting the type of pile. Projects requiring high load capacities—such as those with large, heavy solar panels or in regions with significant wind forces—may necessitate the use of concrete or composite piles.

What is the difference between steel pipe screw pile and PHC pile?

Compared with the PHC pile, the difference in the steel pipe screw pile is that its shaft is thin, the pile-soil friction is small, and the bearing capacity is mainly borne by helical plates.

Photovoltaic pipe pile support size

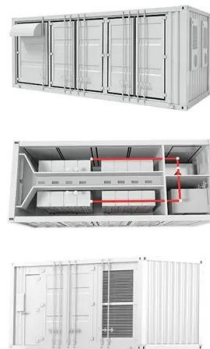


How Solar Panels Defy 70m/s Winds with Helical Piles?

In solar power systems, screw piles are the basic part of the solar panel bracket. During the installation process, professional mechanical tools are used to bury it into the soil 1 meter or ...

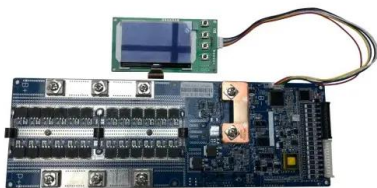
Mastering Steel Pipe Pile Installation: Techniques, Challenges, and

View the complete article here. Steel pipe piles are essential in foundation and construction projects due to their strength and versatility. These cylindrical, hollow steel ...



Comparison and Optimization of Bearing Capacity of Three Kinds ...

The serpentine pile exhibits a significantly higher ultimate uplift bearing capacity of 70.25 kN, which is 8.56 times that of the square pile and 10.94 times that of the circular pile.



Tension Tests on Driven Fin Piles for Support of Solar Panel Arrays

In this paper results of tension tests on driven fin piles proposed to support the solar panel arrays are presented. The piles consisted of steel open pipe piles with four fins ...



Numerical Investigation into the Stability of Offshore Wind Power Piles ...

Monopile foundations are extensively utilized in the rapidly expanding offshore wind power industry, and the stability of these foundations has become a crucial factor for ...

Steel Pipe Piles

Atlas Tube pipe piles have a long track record of successful projects throughout North America, supporting projects in both the public and private sectors. Atlas Tube manufactures pipe piling to ASTM A252, ASTM A500 and CSA G40.21 ...

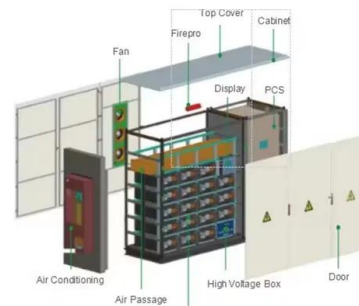


Numerical Investigation into the Stability of Offshore ...

Monopile foundations are extensively utilized in the rapidly expanding offshore wind power industry, and the stability of these foundations has become a crucial factor for ensuring the safety of offshore wind power ...

Field load testing and numerical analysis of offshore photovoltaic

The pile foundations need to meet specific bearing capacity requirements in order to provide structural support for photovoltaic systems. In this paper, based on an offshore photovoltaic ...



Design and Analysis of Steel Support Structures Used ...

The results show that: (1) according to the general requirements of 4 rows and 5 columns fixed photovoltaic support, the typical permanent load of the PV support is 4679.4 N, the wind load being 1

Revolutionizing Solar Piles and Reducing Cost with ...

Our idea is pretty simple: subtract one pound of steel per foot length from every pile used to support a solar photovoltaic panel. The impact? Significant. Photovoltaic facilities average 500 steel piles per megawatt, and ...



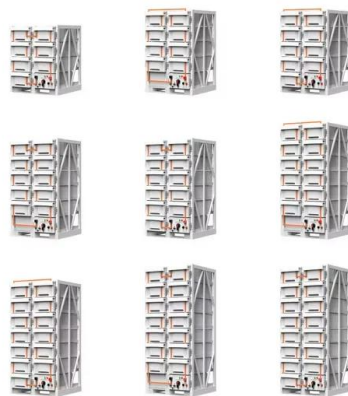
Open-End vs. Closed-End Pipe Piles: Understanding the Differences

By understanding the differences between open-end and closed-end pipe piles, you can make an informed decision that will contribute to the stability and longevity of your construction project. ...



Foundation Alternatives for Ground Mount Solar Panel ...

For a 10 ft. long pipe pile, the drop hammer took about 12 min. as compared to about 1 min. for the vibratory hammer. The uplift capacity of driven piles in most soils depends on the side ...



Review of Recent Offshore Photovoltaics Development

Fixed pile-based photovoltaic systems are stationary PV systems in offshore or tidal areas characterized by higher safety, but also a higher initial investment. and the additional float tube is used to support the ...

Foundations of Solar Farms: Choosing the Right Piles ...

As the demand for renewable energy increases--solar farms are becoming an ideal market for pile driving contractors due to the need for stable, long-lasting foundations that can support large-scale solar installations.



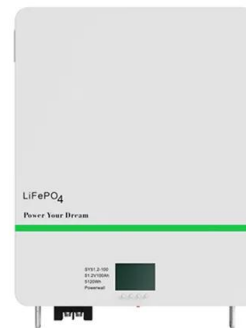


Solar Pile International , Innovative Solar Farm Foundations

With the capability to manufacture and supply over 480,000 tonnes of SPI proprietary piling systems globally per year, Solar Pile International is always prepared to support the piling ...

Spiral pile, Spiral ground pile, Photovoltaic ground pile, ...

We have an annual processing capacity of 12000 tons, mainly engaged in deep processing of steel pipes, photovoltaic pre buried piles, production of various types of spiral piles, hot-dip ...

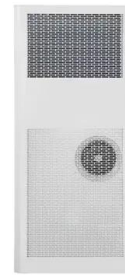


Design and Analysis of Steel Support Structures Used in Photovoltaic ...

The results show that: (1) according to the general requirements of 4 rows and 5 columns fixed photovoltaic support, the typical permanent load of the PV support is 4679.4 N, ...

Effect of driving long pre- stressed high-strength concrete pipe piles

The pre-stressed high-strength concrete (PHC) pipe pile is a new type of pile, usually made from C80 cement and pre-stressed strands. Due to their high strength, good pile ...

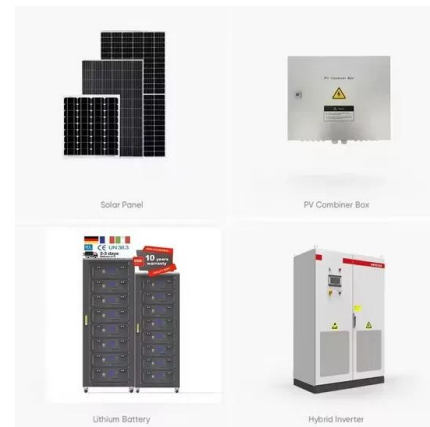


How Danbro Uses Helical Piles To Support Solar ...

Recently, Richmond Septic and Excavation with the help of Danbro used helicals to install solar panels for homeowner Jeff Flockton in Plymouth, Massachusetts. Nick Gill, helical pile field trainer at Danbro aided in ...

Overview of Earth Anchors For PV Ground Mounted Arrays

Drilled concrete piers and driven steel piles have been, and remain the most typical foundation support for ground mounted PV arrays, but more recently there has been a push for "out-of-the ...



Spiral Pile of Various Styles/Photovoltaic Support Screw Pile

Spiral Pile of Various Styles/Photovoltaic Support Screw Pile, Find Details and Price about HDG Screw Pile Spiral Ground Pile from Spiral Pile of Various Styles/Photovoltaic Support Screw ...



Contact Us

For catalog requests, pricing, or partnerships, please visit:
<https://www.ssab-proiect.eu>