

European Solar and Energy Storage Solutions

Photovoltaic panels laid flat on trusses



Overview

Can solar panels be installed on rafters or trusses?

Whether your roof is constructed with rafters or engineered trusses, both can be good fits for solar panels. Both rafters and trusses provide significant structural integrity for a solar panel installation, and most solar companies have significant experience installing on both types of roof supports.

Do solar panels need a roof load calculator?

A suitable roof for solar panels is crucial to the photovoltaic system installation process, whether your roof needs to be reinforced or not. A solar panel roof load calculator can help you determine the size and weight of solar panels your roof can accommodate.

What factors should you consider when installing roof-mounted solar panels?

One of the most important factors when installing roof-mounted solar panels is the condition and structure of the roof. It's vital that a roof be able to not only hold up the weight of the solar panels, but also withstand any wind loads that could pull on the roofing.

Can solar panels be used on a flat roof?

This weight is usually acceptable for any roof type in good shape; however, solar panels using weighted ballasts on flat roofs typically weigh a bit more since concrete blocks hold the system in place. Despite the kind of roofing you have, there are solutions for all types of roofs.

Can a roof withstand a solar panel system?

Despite the kind of roofing you have, there are solutions for all types of roofs. These roof reinforcement methods can help ensure that your roof can withstand the weight of your solar panel system: Wood blocking – installing wood planks between roof rafters. Sistering – when matching wood planks are secured parallel to the original rafter.

Can solar panels cause a roof to collapse?

A typical roof can support 20 pounds per square foot or more, while solar panels only add approximately 2.3 pounds per square feet. So don't worry, solar panels alone won't cause your roof to collapse. However, there are certain factors to consider when determining if a roof is a good fit for solar panels.

Photovoltaic panels laid flat on trusses

Solar panels on slate roofs: an expert guide [UK, 2024]



It will also help ensure that your installation complies with the guidelines laid out by top certification bodies, such as Flexi-Orb or the Microgeneration Certification Scheme (MCS). 3. Fit the mounting brackets

Roof Structure Design for Solar Panel Installation

The load of a solar panel can vary depending on several factors, such as its size, type, and brand. However, on average, a standard 60 solar cells panel, measuring 1.7 square meters, typically weighs around 18 kg ...



Structural Engineering for Roof-Mounted Solar Projects ...

Structural Engineering is a small but critical part of the engineering for a rooftop solar project. It can make or break the feasibility of the project or have significant effects on the system size and cost of racking. In this article, Pure Power's in ...

Rules for Rooftop Solar

The size of the path along the ridge depends on how much of the roof is covered in PV panels. For roofs where PV panels cover up to 33% of the

total area in plan view (essentially, as seen from above), the panels must be at least 18 in. ...



Can Solar Panels be Laid Flat on the Roof? (or Angled?)

Renogy Flexible Solar Panel 100 Watt 12 Volt Monocrystalline Semi-Flexible Bendable Mono Off-Grid Charger for Marine RV Cabin Van Car Uneven Surfaces you'll not only know if solar panels can be laid flat on the roof but also ...

Solar Panels on a Flat Roof: 5 Things to Know

There two main factors in the design of a successful solar panel system generating maximum electricity: Solar panel tilt angle; Solar panel orientation; How to find solar panel installers for a flat roof. As we've ...

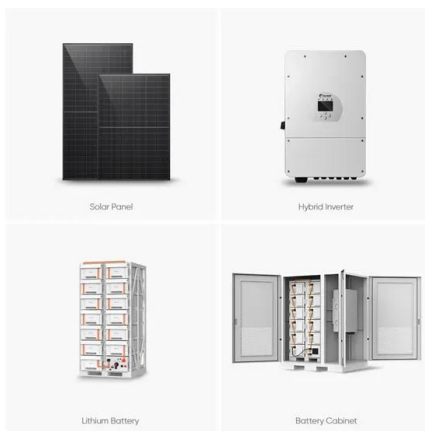


Hints, tips, life hacks to finding trusses/rafters through composite

Going to be performing a DIY install soon, getting ready, having some ideas about locating trusses without making a billion holes in the roof or tapping just the edge and ...

Rooftop solar mounting: Lag in these structural areas ...

Lag screws develop their capacities through thread engagement into wood framing members, commonly roof rafters or trusses. Also required is proper edge distance of the lag screw from the edge of a member. This is to ...



A Homeowner's Guide on How to Install a Solar Panel at Home

Solar panels--also known as photovoltaic panels--are the center of gathering solar energy. Each solar panel is composed of a multitude of photovoltaic cells which collect and converts photons ...

Rafter or decking: Where should you mount a solar array?

The design of a solar array on a shingled or tiled pitched roof is influenced by whether the system will be attached to the roof's rafters or decking, and there isn't exactly a straight answer on which is best. It really depends on ...



Contact Us

For catalog requests, pricing, or partnerships, please visit:
<https://www.ssab-proiect.eu>