

European Solar and Energy Storage Solutions

Photovoltaic panels in Buddha Light House



Overview

Are building-integrated photovoltaics a viable alternative to solar energy harvesting?

Historically, solar energy harvesting has been expensive, relatively inefficient, and hampered by poor design. Existing building-integrated photovoltaics (BIPV) have proven to be less practical and economically unfeasible for large-scale adoption due to design limitations and poor aesthetics.

What is building-integrated photovoltaics (BIPV)?

Building-integrated photovoltaics (BIPV) is a sustainable solution to address these concerns and to contribute to a net-positive world. This advanced technology can be utilized in solar building envelopes, skylights, windows, and balcony railings to produce green energy.

Where are photovoltaic panels placed?

As a result, photovoltaic panels are often placed in locations that receive partial shading at various times of the day or year , . This shading comes from neighboring buildings, trees, and urban-influenced cloud cover.

What is building-applied photovoltaics (BAPV)?

Building-applied photovoltaics (BAPV), in which modules are affixed to rooftops or facades of existing buildings are an important and presently dominant form of PV systems for both commercially owned and residential systems. This type of system has the advantage of being able to be retrofitted onto present structures.

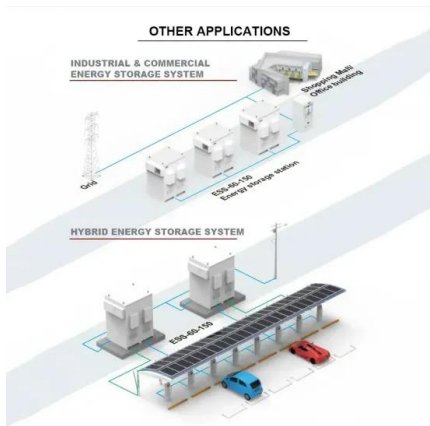
Where do photovoltaic panels get partial shading?

Partial shading The scarcity of open space in urban regions compels installation of PV on rooftops, building façades, walkways, and parking lots. As a result, photovoltaic panels are often placed in locations that receive partial shading at various times of the day or year , .

How do Tibetan Buddhist monks electrify the prayer hall at Lingshed Monastery?

Tibetan Buddhist monks celebrate the electrification of the prayer hall at Lingshed Monastery, in the Ladakh region of the Himalayas. The LED lights are connected to solar direct-current microgrids, installed by volunteer engineers from the IEEE Smart Village initiative. Photo: Paula Bronstein

Photovoltaic panels in Buddha Light House

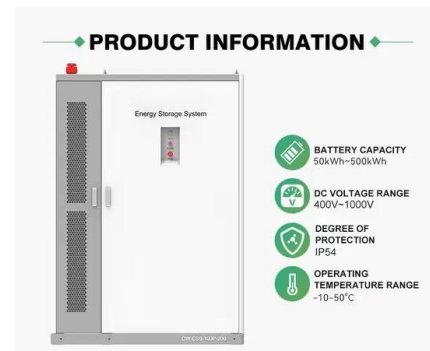


A Review for Solar Panel Fire Accident Prevention in Large-Scale PV

provided for solar panel fire accidents in large-scale PV applications. Section II illustrates the reasons of the solar PV related fire accidents, which include hot-spot ...

Lumos Solar , Solar Panel Supplier , Architectural Solar Design

Lumos LSX and GSX Module systems can be easily integrated into virtually any new or existing structure for use in carports, facades, awnings, canopies, or any structure you can imagine. ...



A quick comparison model on optimizing the efficiency of photovoltaic ...

Solar energy reaches the earth. Solar energy generally refers to the radiation energy of sunlight, and solar radiation is an integral part of different renewable energy ...

Solar Facade Cladding System , BIPV , Solstex by Elemex

With the smallest carbon footprint and lowest

water usage during manufacturing, Solstex panels are the photovoltaic (PV) industry's most eco-efficient. High-Efficiency High-Efficiency Solstex ...



Hudson Valley Solar Panel Services , Lighthouse Solar

We have been providing professional solar panel services since 2009. Call Lighthouse Solar for a FREE estimate! At Lighthouse Solar, our Hudson Valley solar panel installation company are ready to bring the power of the sun to ...



(PDF) Effect of partial shading patterns and degrees of ...

Decrease in the output power of the photovoltaic panel is experienced, whenever there is shading on the panels which can be caused by trees near the solar panel installation or other sources



7 New Solar Panel Technologies Shaping the Future of ...

Recent advancements in bifacial solar panel technology have contributed to their growing market share in the renewable energy sector. The global bifacial solar panel market has witnessed notable growth due to factors ...



The 11 Best Outdoor Solar Lights of 2024, Tested and ...

The solar panel on top of the Hampton Bay LED Outdoor Solar Spotlights are adjustable, so you can angle them directly towards the sun for a longer runtime. The Spruce / Michelle Lau. At 55 lumens, this light is relatively ...



Contact Us

For catalog requests, pricing, or partnerships, please visit:
<https://www.ssab-proiect.eu>