

European Solar and Energy Storage Solutions

Photovoltaic panels facing east



Overview

Using an east-facing roof is an excellent alternative when mounting solar panels facing south is impossible. It is the second-best orientation, significantly more effective than west or north.

Using an east-facing roof is an excellent alternative when mounting solar panels facing south is impossible. It is the second-best orientation, significantly more effective than west or north.

Homes that have solar panels facing directly east or west will produce around 20% less energy. The proper solar panel orientation for homes located north of the equator is facing true south.

Much like west facing panels, arrays oriented to the east create about 15% less energy than average.

Panels turned away from the south generate less power – about 15% less when facing east or west, and around 30% less if facing north.

In general, solar panels that face either directly east or west produce about 20% less electricity than if they faced south.

Photovoltaic panels facing east



Deye inverters and Deye batteries are more compatible.

How to Find the Best Orientation and Angle of Solar ...

...

??4%?? Solar panel orientation refers to the cardinal direction the panel is facing: north, south, east or west. To be more specific, the orientation refers to the horizontal direction of solar panels in relation to the ...

21 Reasons to Choose an East/West Solar Panel ...

Don't worry, an East and West facing solar panel orientation still works brilliantly throughout the period of 10 am-2 pm. Fundamentally though, this favoured concept has the potential to affect one common circumstance more ...



Will Solar Panels Work On An East-Facing Roof?

Using an east-facing roof is an excellent alternative when mounting solar panels facing south is impossible. It is the second-best orientation, significantly more effective than west or north. East-facing panels can create ...



Best Angle & Direction for Solar Panels UK: November ...

The best angle for solar panels in the UK is

between 30° and 40°.; To ensure that your solar panels can produce energy optimally, they should be installed on a south-facing part of your roof.; Solar panel angle and ...



Which Solar Panel Direction (Orientation) Is Best?

East Orientation: East-facing solar panels are similar to west-facing ones in producing around 15% less electricity overall than north-facing panels, but produce more electricity in the morning and less in the afternoon. ...

The best angle and direction for solar panels in the UK

4 ???· The impact of direction on solar panel output. Your solar panel system's direction is one of the biggest factors in determining its output. This chart below uses an average of 26 arrays in Yorkshire that all have peak power ...



What Is the Ideal Positioning for Solar Panels? Rooftop Tilt, Solar

A north-facing solar panel will still generate electricity because it gets indirect sunlight, but it will not reach the highest possible output. Solar Panel Azimuth: East-West ...

Solar panel output: How much electricity do they ...

A solar panel works best when installed on a south-facing roof at a 35-degree angle. However, solar panels can still produce a decent amount of power on an east-facing or west-facing roof, and at an angle anywhere ...



Solar panels: East-facing or west-facing roof?

If you face the panels east your panels will generate less energy over the course of the day than if they were facing north, but if you use more electricity during the morning hours this might make sense for you.



Benefits of bifacial solar cells combined with low voltage power ...

By deploying vertically mounted east-west oriented bifacial solar panels, the advantage is that a single bifacial solar panel can operate in both directions, attaining almost ...

Best direction for solar panels: How to position your solar PV panels

To find out, we used the MCS PV Output Calculator, which lets MCS-certified solar panel installers calculate the best direction and angle for panels anywhere in the UK. It ...



East facing or West facing, is one better than the other?

Just installed mine with 12 facing east and 10 facing west here in SoCal. No shades, TOU 4-9pm peak, west facing panels been generating slightly more per panel but not by much, but rates ...



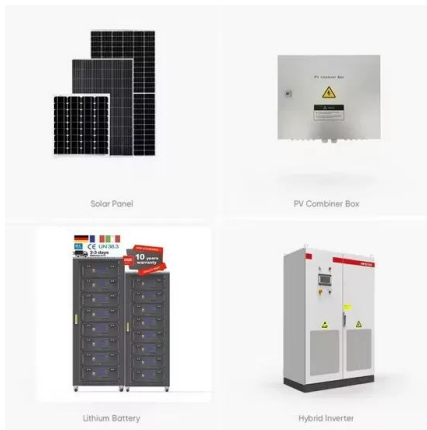
What is the best direction for solar panels to face?

According to experts, the placement and orientation of solar panels is just as important as which type of solar panel is used in a given situation. In order for solar panels to reach their peak generation capacity, a ...

Point Your Solar Panels in the Right Direction for the Most Power

Think of your panel's orientation as the direction it's facing in terms of north, south, east and west. The angle is how flat (lying on its back and facing straight up) or tilted your





Will Solar Panels Work on an East-Facing Roof?

5 ??? An east-west split orientation is also possible. This orientation is recommended for houses in the northern hemispheres. In this solar panel direction, the east-facing solar panels ...

Solar Panel Efficiency: Orientation & Angle for Maximum Sun Power

Discover how solar panel orientation affects solar panel efficiency. Learn optimal solar panel angles and positioning for maximum energy generation along with boosting your solar power ...



What's the Best Angle for Solar Panels? , EnergySage

For maximum output, the sweet spot for solar panels in the continental U.S. is facing roughly south and tilted between 15 and 40 degrees, according to the Department of Energy. That keeps the panels in the sun ...

Why you might consider East-West solar panel ...

The choice of solar panel installation on your rooftop will greatly depend upon your usage and your roof structure. And although it used to be true a few years ago, that. On an average, east-facing panels will produce about ...



Contact Us

For catalog requests, pricing, or partnerships, please visit:
<https://www.ssab-proiect.eu>