

European Solar and Energy Storage Solutions

Photovoltaic panels directly connected to load



Overview

Solar panels are a great way to generate renewable energy, but can you actually draw power directly from them?

The answer is yes! Solar panels are made up of glass and photovoltaic cells, which use sunlight to generate electricity. This electricity can then be used to power your home or business. There are a few things to.

Solar panels and inverters are two key components in a photovoltaic (PV) system. Solar panels convert sunlight into direct current (DC) electricity.

No, a solar panel does not need a load in order to function. A load is only required when the solar panel is used to power an electrical device. When the panel is exposed to sunlight, it produces electricity that can be stored in.

The solar panel can be used without batteries in some cases. For example, if you have a solar-powered calculator, the solar panel is directly.

Solar panels are a great way to generate electricity without harming the environment. However, many people are unsure if they can be used without batteries. The answer is.

(About the Process)Choose the right solar panel for your needs;Connect the positive lead of the solar panel to the positive terminal of the load and connect the negative lead of the solar panel to the negative terminal of the load;Make sure that all connections are secure and there are no bare wires exposed;That's it! .

(About the Process)Choose the right solar panel for your needs;Connect the positive lead of the solar panel to the positive terminal of the load and connect the negative lead of the solar panel to the negative terminal of the load;Make sure that all connections are secure and there are no bare wires exposed;That's it! .

A load-side PV connection is an electrical connection of the PV system output (power source) to a circuit in the building or dwelling, which is on the load side of the main service disconnect.

The simplest type of stand-alone PV system is a direct-coupled system, where the DC output of a PV module or array is directly connected to a DC load (Figure 1).

Photovoltaic panels directly connected to load



A comprehensive introduction to the solar panel wiring operation ...

7. Can the battery be directly connected to the solar panel. No. If you connect the solar panel directly, it will form a solar panel to charge the 12v 100ah lithium ion batteries ...

Understanding Solar Photovoltaic (PV) Power ...

PV systems are most commonly in the grid-connected configuration because it is easier to design and typically less expensive compared to off-grid PV systems, which rely on batteries. Grid-connected PV systems ...



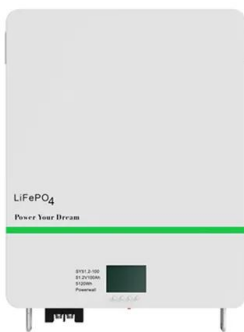
How To Use Solar Panel Directly Without Battery?

Here we explain how to power a load directly with a solar panel, why batteries are necessary, and the pros & cons of using a solar panel directly without a battery. Can I Connect a Solar Panel Directly to a Load?

How Solar Power And The Grid Work Together

When grid-tied, your solar panel system is

connected to the grid via a bi-directional electricity meter. It measures the excess power you send to the grid when your solar panels produce more than you need, and the amount ...

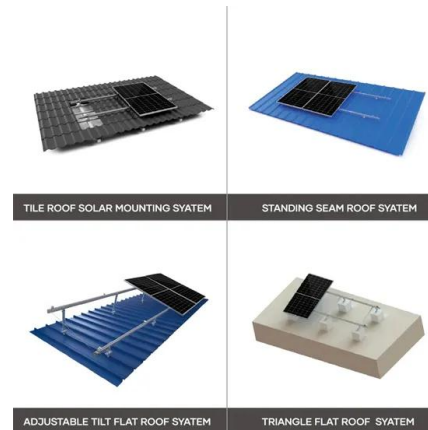


Solar Cell: Working Principle & Construction (Diagrams Included)

Key learnings: Solar Cell Definition: A solar cell (also known as a photovoltaic cell) is an electrical device that transforms light energy directly into electrical energy using the ...

Parallel Connected Solar Panels For Increased Current

Parallel Connected Solar Panels How Parallel Connected Solar Panels Produce More Current. Understanding how parallel connected solar panels are able to provide more current output is important as the DC current-voltage (I-V) ...



A hybrid renewable energy system integrating ...

In this paper, a topology of a multi-input renewable energy system, including a PV system, a wind turbine generator, and a battery for supplying a grid-connected load, is presented. The system utilizes a multi ...

Line Side Tap vs. Load Side Tap: Everything You Need ...

With a load side tap, your solar inverter is wired directly to your electrical panel through a circuit breaker. When you have more power than you need, it flows from that breaker through the bus bars, the main breaker, the ...



Types of PV Systems

Photovoltaic power systems are generally classified according to their functional and operational requirements, their component configurations, and how the equipment is connected to other power sources and electrical loads. The two ...

Solar Power Plant - Types, Components, Layout and Operation

The output of the solar panel is in the form of DC power. Hence, DC load can directly connect with the solar system. But if you need to connect the AC load, the inverter is necessary to convert ...



A review of technical issues on the development of solar photovoltaic

Solar PV power fluctuates due to variations in radiation and temperature levels. Furthermore, when the solar panel is directly connected to the load, the power that is delivered ...



Contact Us

For catalog requests, pricing, or partnerships, please visit:
<https://www.ssab-proiect.eu>