

## European Solar and Energy Storage Solutions

# Photovoltaic panel slope installation conditions



## Overview

---

Usually, solar panels of a self-consumption system are located on the roof, although it is not the area closest to the storage system or energy meters. For security and architectural integration reasons, the roof of the buildings is usually determined as the location area for the solar panels. The roof is a structural element of the.

The roof space will determine the available surface in which the property defines to locate the PV panels. It will be necessary to ensure that this surface is an easily accessible space for maintenance operations, while this.

To take maximum advantage of solar radiation, it is advisable to orient the solar panels towards the south if we are in the northern hemisphere and the north if we are in the southern hemisphere. Solar panels facing south or.

The separation between rows of PV panels must guarantee the non-superposition of shadows between the rows of panels during the winter or summer solstice months. We can calculate this distance with this.

The optimal tilt angle of photovoltaic solar panels is that the surface of the solar panel faces the Sun perpendicularly. However, the angle of incidence of solar radiation varies during the.

For most homeowners, the ideal angle for a solar panel installation is close to or equal to the latitude of your home. This angle is typically between 30 degrees and 45 degrees.

For most homeowners, the ideal angle for a solar panel installation is close to or equal to the latitude of your home. This angle is typically between 30 degrees and 45 degrees.

To ensure optimal performance, consider the following factors: The direction of orientation: PV panels should face south in the northern hemisphere and north in the southern hemisphere for maximum solar exposure. Tilt angle: Adjust the tilt according to the latitude of the installation site to maximize solar capture. This will also affect the performance of the solar PV array and minimize shading issues.

As a rule of thumb, an ideal roof slope for a solar array equates to the project location's latitude or within ten degrees less of what the site's latitude is.

As a rule of thumb, solar panels should be more vertical during winter to gain most of the low winter sun, and more tilted during summer to maximize the output. What is the optimal tilt angle of photovoltaic solar panels?

The optimal tilt angle of photovoltaic solar panels is that the surface of the solar panel faces the Sun perpendicularly. However, the angle of incidence of solar radiation varies during the day and during different times of the year.

Why is the slope angle of solar panels important?

The preeminent slope angle of solar panels is an important determinant of falling solar radiation on the surface of photovoltaic panels. Characteristics of the position of latitude, the sun, and local geography must be explained and understood to determine the slope angle correctly.

Should solar panels be angled on a low angled roof?

Flush-mounting solar panels on a low-angled roof will produce less electricity and reduce solar savings. To receive exceptional solar savings, you'll want your solar panels to be angled in a way that optimizes the sunlight exposure for that location. This is done by tilting your solar panels at the same angle as the latitude of your home.

Should solar panels be vertical or tilted during winter?

As a rule of thumb, solar panels should be more vertical during winter to gain most of the low winter sun, and more tilted during summer to maximize the output. Here are two simple methods for calculating approximate solar panel angle according to your latitude.

Can solar panels be installed at a fixed angle?

However, most solar panels installed for home use are mounted on the roof at a fixed angle. Meaning, the process of changing the angle of your solar panels with each season can be quite difficult. There are systems that can be installed that will track the axis of the sun and adjust the angle over time.

Should solar panels be tilted?

Even a relatively small adjustment off the ideal angle can result in substantial

losses of solar exposure and output over the 25-30 year expected lifespan of a solar installation. For example, solar panels installed at a 40 degree tilt may produce 10-25% more electricity annually compared to horizontal panels in many locations.

## Photovoltaic panel slope installation conditions

---

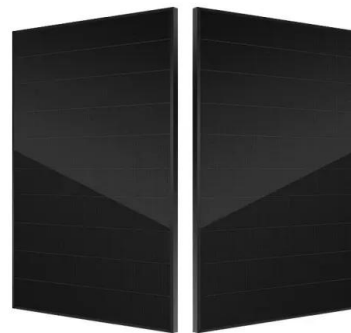


### Energy, environmental, economic, and social assessment of photovoltaic ...

In consideration of the potential issue of dazzling reflections caused by solar panels installed on the cut slope of the expressway (Liu et al., 2024), install PV panels must be installed on the fill ...

### What is the Best Angle for Solar Panels? Maximizing ...

Considering the high upfront costs of solar, ensuring maximum solar panel performance by getting the angle right is critical for the fastest return on investment. The ideal tilt angle differs based on latitude and local ...



### Frontiers , Optimal Photovoltaic Panel Direction and ...

The direction and tilt angle of a solar panel are essential parameters that influence the system's output and thus have been applied to solar thermal panels. Machine learning, a rapidly adopted area, can be utilized ...



### Solar Panel Angle: how to calculate solar panel tilt ...

Calculating the Optimal solar panel Angle. As a

rule of thumb, solar panels should be more vertical during winter to gain most of the low winter sun, and more tilted during summer to maximize the output. Here are two ...



## Calculate the best slope angle of photovoltaic panels theoretically ...

The preminent slope angle of solar panels is an important determinant of falling solar radiation on the surface of photovoltaic panels. Characteristics of the position of ...

## The best angle and direction for solar panels in the UK

4 ???· The impact of direction on solar panel output. Your solar panel system's direction is one of the biggest factors in determining its output. This chart below uses an average of 26 arrays in Yorkshire that all have peak power ...



## Solar Energy Calculator and Mapping Tool

These solar panels correspond to the majority of rooftop-installed solar panel technology. This is the power that the manufacturer declares the photovoltaic system can produce under standard test conditions, which include constant ...

## The best angle and direction for solar panels in the UK

4 ???· The impact of direction on solar panel output. Your solar panel system's direction is one of the biggest factors in determining its output. This chart below uses an average of 26 ...



## How PV panel tilt affects solar plant performance -- ...

The optimal tilt angle for a PV panel will differ throughout the year, and will also vary by latitude. Understanding the impact of both latitude and the time of year on the intensity of the sun's rays that can reach a panel is key ...

## Estimating the impact of azimuth-angle variations on photovoltaic

Introduction. Photovoltaic (PV) system output energy yield strongly depends on weather conditions such as wind speed [], humidity variations [], temperature fluctuation and ...



## Solar 101: Working the angles to maximize your solar

In a perfect world, solar panels always face the sun at a perpendicular angle. But most prospective solar buyers are stuck with pre-existing realities: a home they already own, and a roof with preexisting conditions. ...



## Contact Us

---

For catalog requests, pricing, or partnerships, please visit:  
<https://www.ssab-proiect.eu>