

European Solar and Energy Storage Solutions

Photovoltaic panel size specifications corresponding to wattage



636V-876V
215KWH Distributed ESS Cabinet

- Factory/farm/hotel/island etc solution
- Professional designing and analysis
- Lithium /GEL batteries optional
- Technical and installation support
- Intergrated 20/40ft container solution

Overview

Traditionally, solar panels can be categorised into two sizes: 60-cell and 72-cell solar panels. The size in watts corresponds to their physical dimensions and power output.

Traditionally, solar panels can be categorised into two sizes: 60-cell and 72-cell solar panels. The size in watts corresponds to their physical dimensions and power output.

Here are a few examples of the dimensions of the most popular solar panel wattages: A typical 100-watt solar panel is 41.8 inches long and 20.9 inches wide. It takes up 6.07 sq ft of area. A typical 300-watt solar panel is 65.8 inches long and 36.1 inches wide. It takes up 16.5 sq ft of area. A typical 400-watt solar panel is 79.1 inches long and 39.1 inches wide. It takes up 21.53 sq ft of area. .

Solar panel sizes and wattage range from 250W to 450W, taking up 1.6 to 2 square metres per panel. What are the dimensions of a residential solar panel?

In general, the length of residential solar panels is usually between 65 inches (1.65m) and 79 inches (2m), their width is between 39 and 41 inches (around 1m). The area of a residential solar panel is between 18 ft² and 22 ft². The following section explains the different types of residential solar panels and their dimensions.

What is a rated wattage solar panel?

1. **Rated Wattage** The wattage of a solar panel represents the electricity it generates under specific test conditions. These conditions include a solar irradiance of 1,000 watts per square meter, solar cell temperature of 25°C, and 1.5 air mass.

What is a solar panel size?

Refers to the total amount of power a solar panel can generate over a period of time. This is usually calculated by multiplying the panel voltage by the

amperage. Solar cell dimensions are typically around 189 x 100 x 3.99cm, while solar panel dimensions are usually between 1.6m² to 2m².

How many Watts Does a residential solar panel produce?

Residential solar panels are generally designed to produce between 300 and 400 watts each. And even though some are more efficient than others, the dimensions and areas of residential solar panels are pretty much standard.

How do I calculate wattage for solar panels?

Use the formula: Monthly energy usage ÷ (Sunlight hours per day × Solar panel efficiency) to estimate the required wattage for your solar panels. In short, knowing how big solar panels are and how much power they make is really important for getting the most energy and making your solar investment work well.

How many kW is a 20 watt solar panel?

Usually, it is 1.2 to 1.5 which is multiplied by the desired output. For example with a 20% buffer, the required solar panel output with Buffer (Watts) = 6 kW × 1.20 = 7.2 kW Nevertheless, when you are choosing solar panels make sure their power ratings equal or surpass the required output to meet your energy needs and preferences.

Photovoltaic panel size specifications corresponding to wattage



580 Watt Solar panels for sale , Prices, dimensions, weight, ...

Solar Panel > Module by watt > 580. 580 Watt Solar panels' range of prices, dimensions, sizes, voltage output, specifications datasheets. Ranges of information. Voltage: -60MDH-G12 ...

450 Solar Panel, 450 Watt Solar Panel Specifications ...

Uncover the Power of the 450 Solar Panel , Unbeatable Price & Specs - INLUX Solar. Get amazed by the tremendous output and compact dimensions of the 450 watt solar panel, perfect for maximizing energy efficiency. Learn more now!



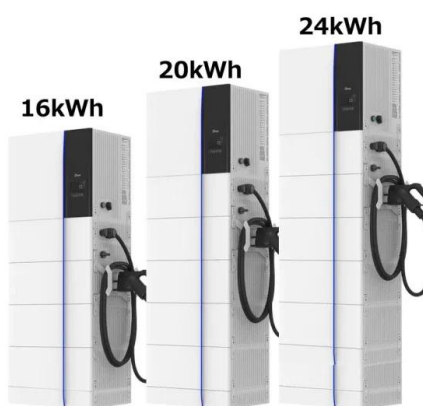
How big is a solar panel? A guide to the different sizes and dimensions

The bigger the solar panel, the more power it produces. Solar panels consist of solar cells that are wired together to convert sunlight into energy. The bigger the solar panel, ...

Solar Panel Dimensions and Sizes: Complete Guide

Standard Solar Panel Size. How big is a solar

panel? There are three main sizes of solar panels to know: 60-cell, 72-cell, and 96-cell. For commercial and residential solar panels, the 60-cell ...



How to understand and compare solar panel specifications

Sometimes referred to as the panel's wattage or size, the power output describes the amount of power a solar panel can produce. Most home solar panels today typically boast power ratings ...

Solar Panel Sizes and Wattage Explained

How to Calculate Solar Panel Wattage. This wattage refers to the overall power output that a PV panel can provide in a specific amount of time. It is determined by factors such as voltage, amperage, and number of cells. ...



Solar Panel Sizes & Dimensions UK (2024)

The size of a solar panel is measured in watts, which indicates the amount of power it can generate. The most common solar panel sizes for residential installations are between 250W and 400W, while larger commercial ...



Solar Panel Ratings Explained - Wattage, Current, Voltage, and

For instance, at night, when Solar Irradiance is 0 Watts/m², the solar panel, regardless of its rated power, will produce 0 Watts. However, in some situations, when the ...



540 Watt Solar panels for sale , Prices, dimensions, weight, ...

540 Watt Solar panels' range of prices, dimensions, sizes, voltage output, specifications datasheets. Ranges of information. The CSM535-555 WATT solar panel by Cell Solar is a ...

Guide to Solar Panel Sizes & Dimensions (November ...

Solar panel size refers to the total amount of power a solar panel can generate over a period of time; Solar panel dimensions refers to the physical size of a solar panel; Solar panel sizes and wattage range from 250W ...





40 Watt Solar Panel: Everything You Need To Know - Dot Watts®

So now your overall power production from the 40W solar panel will reduce to 170 watts per day (30 watts of power loss if you're using an inverter or running AC load) Will a ...

How big is a solar panel? A guide to the different sizes ...

The area of a 60 cell solar panel is generally about 18 ft² (1.68m²). The average length, width, and thickness of a 72 cell solar panel are 79 inches (2m), 40 inches (1m), and 1.5 inches (38mm) respectively.

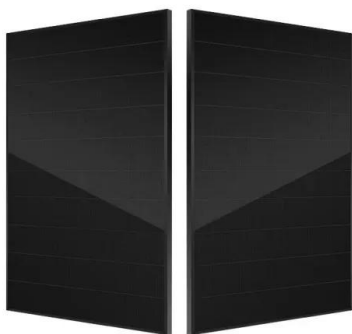
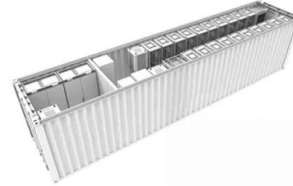


How to Size a Solar System [Step-by-Step Guide]

Once you have your final array size, simply divide by the wattage of your desired solar panels to figure out how many panels you need. Using our example of a 7.2 kW (7,200-watt) array for 100% offset, here's a sample system that would ...

The Ultimate Guide to EcoFlow Solar Panel Specs

Solar panel specifications are highly technical & can feel overwhelming. Let's shed some light on solar panel specs! Buyer's Guides Detailed Guide to LiFePO4 Voltage Chart (3.2V, 12V, 24V, 48V) Buyer's ...



Solar Panel Ratings Explained - Wattage, Current, ...

For instance, at night, when Solar Irradiance is 0 Watts/m², the solar panel, regardless of its rated power, will produce 0 Watts. However, in some situations, when the Solar Irradiance surpasses 1000 Watts/m², an occurrence ...

Contact Us

For catalog requests, pricing, or partnerships, please visit:
<https://www.ssab-proiect.eu>