

European Solar and Energy Storage Solutions

Photovoltaic panel partition installation method



Overview

How to make the best use of a solar photovoltaic (PV) system?

How to make the best use of a solar photovoltaic (PV) system has received much attention in recent years. Integrating geographic information systems (GIS), this paper proposes a new spatial optimization problem, the maximal PV panel coverage problem (MPPCP), for solar PV panel layout design. Suitable installation areas are first delineated in GIS.

How should a PV system be designed & installed?

From the outset, the designer and installer of a PV system must consider the potential hazards carefully, and systematically devise methods to minimise the risks. This will include both mitigating potential hazards present during and after the installation phase.

How are solar panels installed?

First, PV panels are installed parallel to the rooftop. Second, the edges of all panels are parallel to the edges of a rooftop. As most solar PV panels are rectangular, panel orientations in terms of whether a panel is portrait or landscape are considered.

How to optimize PV panel layout?

In the PV panel layout design, in addition to site selection, the optimal orientation of each panel needs to be determined. Further, orientation of multiple adjacent panels may vary depending on the practical alignment requirements. All these necessitate development of a new maximal covering model to achieve the PV panel layout optimization.

How to design a solar panel?

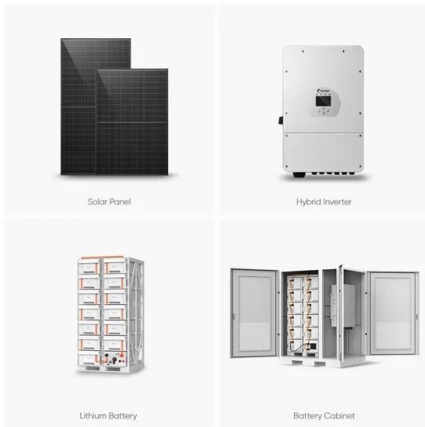
The spatial layout design of PV panels starts with identification of rooftop areas suitable for the panel installation in a GIS. Based on the identified suitable areas, the appropriate candidate panel sites are identified. Two

important assumptions are made in this study for simplifying the illustration.

What type of mounting structure is used for PV panels?

This mounting structure is often used for residential systems. Helical piles. In sites with weak granular soils, helical piles are driven deep into the ground and attached to the PV panels. They can withstand uplift forces caused by the soil expanding or by strong winds as the helixes in the poles keep them fixed in place.

Photovoltaic panel partition installation method

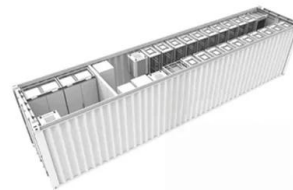


Ultimate Guide to Photovoltaic Installation: Step-by ...

IBC Series Solar Panel; HJT Solar Panel; N-TopCon Solar Panel; Balcony Solar Power System; Blog. All Blogs Maysun Solar offers you the most useful knowledge and the latest news from the photovoltaic industry; Regardless ...

Spatial layout optimization for solar photovoltaic (PV) ...

Integrating geographic information systems (GIS), this paper proposes a new spatial optimization problem, the maximal PV panel coverage problem (MPPCP), for solar PV panel layout design.



Global Installation Guide for Suntech Power Standard ...

and control specifications connected to the PV output, it should be multiplied by a reasonable factor, and the safety factor reference value is 1.25. The appropriate coefficients as well as the ...

Solar mounting structure construction methods -- ...

Solar panel mounting systems play a key role in

ensuring that photovoltaic (PV) installations operate at their best. They provide the structure needed to hold the panels in place at their optimal angles, allowing them to ...



Installation Method Statement Rooftop PV panels less or ...

The project involves the installation of Photovoltaic (PV) solar panels on the roof of the building, which will have an energy generation capacity of 50kW. The proposed works include: the ...



Correct Installation of Photovoltaic (PV) System

If 6 PV panels are erected on an independent supporting structure and the weight of each PV panel is around 26kg. The weight of the system supported by the structure will be 156kg (i.e. $26\text{kg} \times 6$ PV panels).



Solar photovoltaic panel soiling accumulation and removal methods...

A larger inclination angle can prevent the deposition of soiling particles to a certain extent, but this rule is not absolute. Many factors, such as the surface material of the ...



Ground Mounted PV Solar Panel Reinforced Concrete ...

A ground mounted solar panel system is a system of solar panels that are mounted on the ground rather than on the roof of buildings. Photovoltaic solar panels absorb sunlight as a source of ...



Contact Us

For catalog requests, pricing, or partnerships, please visit:
<https://www.ssab-proiect.eu>