

European Solar and Energy Storage Solutions

Photovoltaic panel line 6 flat



Overview

Installing flat panels rather than ground-mounted systems has significant advantages for solar project developers.

While flat PV panels can be installed at a lower cost and with lower degradation rates, there are disadvantages to consider for utility-scale solar projects.

The type of PV structure you choose for a utility-scale solar plant has a direct impact on its profitability. Flat panel systems can increase return on investment in areas with limited land availability by increasing the number of panels.

How do solar panels work on a flat roof?

The solar panels are attached to a solar racking system. That racking system has trays below the panels on which heavy concrete blocks will be placed. The weight of these blocks keeps the solar panels in place on flat roofs. While the system will sit on a flat roof, the solar panels themselves will be installed at an angle in most cases.

What are photovoltaic panels?

Photovoltaic panels are a type of solar panels whose function is to generate electricity from sunlight. These types of panels are an essential component in all photovoltaic installations. How do photovoltaic panels work?

.

Are flat roof solar panels a good investment?

You'll have to choose the mounting option that's right for your property and energy needs, but provided you pick the right one and get panels with a good efficiency rating, a flat roof solar array can be an outstanding investment. Plus, some mounting options could end up being more affordable than an installation on a sloped roof.

What equipment do I need for a flat roof solar panel installation?

These include parapet walls, roof vents, HVAC equipment and more. Panels should be installed away from parapet walls and other protrusions to prevent shading during sunlight hours. Will You Need Special Equipment for a Flat Roof Solar Panel Installation?

.

What are photovoltaic panels & how do they work?

They are designed for builders constructing single family homes with pitched roofs, which offer adequate access to the attic after construction. It is assumed that aluminum framed photovoltaic (PV) panels mounted on a “post” and rail mounting system, the most common in the industry today, will be installed by the homeowner.

Do I need to meter a photovoltaic system?

It is assumed that aluminum framed photovoltaic (PV) panels mounted on a “post” and rail mounting system, the most common in the industry today, will be installed by the homeowner. While metering the system is encouraged, the specification does not address system wiring elements for associated system sensors or monitoring equipment.

Photovoltaic panel line 6 flat



Complete PV Production Line Solutions manufacturer

Y-2000 Round & Flat ribbon solar stringer; Solar panel production line; Solar module manual line; Solar Laminator; Auto layup; EL & IV Test; 300MW double glass solar panel assembly line. ...

Installing Solar Panels on a Flat Roof (3 Tips to ...)

In this article, we'll discuss how efficient panels can be on flat roofs, the cost of a flat roof solar panel system and more. We'll also offer four tips for saving money upfront and over time on your flat roof solar array.



Structures for photovoltaic solar panels

Solar panel frames are systems specifically designed to hold photovoltaic modules in place and provide the optimal tilt to capture the maximum amount of solar energy. Floor structures are versatile and can be installed ...

Fire Safety Guideline for Building Applied Photovoltaic

...

2 Fire Safety Guideline for Building Applied Photovoltaic Systems on Flat Roofs Scope In the current guideline, the focus will be on buildings with flat roofs that have photovoltaic (PV) ...



Flat Roof Mounting Solutions

Product Line Flat Roof System; XR Rail® Family XR Rails® have a unique curved profile that increases structural strength and spanning capability, meaning fewer roof penetrations and more cost-effective designs. structural performance of ...

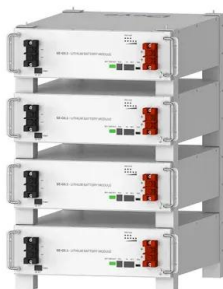
Solar Panel kWh Calculator: kWh Production Per Day, ...

Big solar panel system: 1kW, 4kW, 5kW, 10kW system. These include several solar panels connected together in a system (2 - 50 solar panels). Great, that's in line with expectations and you're right, the daily kWh production from 3.9kW ...



Flat Roof Commercial Building Solar Panel Systems

Only Solar Electric Supply combines professional experience with the finest commercial roof solar systems for flat-roof commercial buildings to deliver unbeatable customer satisfaction at low ...

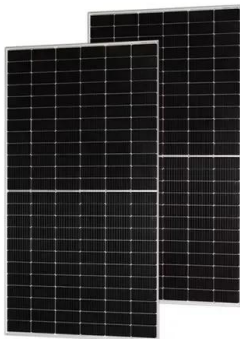


Deye Official Store

10 years
warranty

Installing Solar Panels On A Flat Roof , Paradise Energy

Learn how ballast-mounted solar panel systems can be installed on flat roofs, providing a practical solution for businesses to generate renewable energy. Skip to content.
877-851-9269 That ...



Solar Panels for Flat Roofs: Roof Requirements [2023]

Solar Panels can be the wisest investment you have made so far for your commercial building to produce energy. Solar panels for flat roofs are not more expensive than a standard sloped rooftop installation. In fact, flat roofs are the ...

The best angle and direction for solar panels [UK, 2024]

4 ???· The impact of direction on solar panel output. Your solar panel system's direction is one of the biggest factors in determining its output. This chart below uses an average of 26 arrays in Yorkshire that all have peak power ...



What is Flat Plate Array?

There are several advantages to using flat plate arrays, which are a type of solar panel system that consists of multiple flat plate collectors arranged in an array. Here are some of the advantages: High Efficiency: Flat ...



Series 6 Family

First Solar Series 6 photovoltaic (PV) modules set the industry benchmark for reliable energy production, optimized design and environmental performance. Up to 480 Watts. Up to 19.0% Efficiency. 30 Year Linear Performance Warranty.

...



Photovoltaic Efficiency: Solar Angles & Tracking Systems

straight out of a PV panel (also called the line that is normal to the surface of the panel). This is the most important angle. Solar panels are most efficient when pointing at the sun, so ...



Contact Us

For catalog requests, pricing, or partnerships, please visit:
<https://www.ssab-proiect.eu>