

European Solar and Energy Storage Solutions

Photovoltaic panel fixed block size



Overview

For fixed-tilt panels, the optimal angle may need to be adjusted due to factors like panel soiling, shading, and seasonal irradiation distribution. The higher the panels are tilted, the more they will be cleaned by rain but also the more they will shade panels in rows behind them.

For fixed-tilt panels, the optimal angle may need to be adjusted due to factors like panel soiling, shading, and seasonal irradiation distribution. The higher the panels are tilted, the more they will be cleaned by rain but also the more they will shade panels in rows behind them.

This factsheet will help you estimate the size and number of solar panels needed to meet your electrical demand. Review this factsheet to learn how to assess your electrical loads, identify solar energy levels, and correlate your electrical demand to solar production.

Quickly install up to 14 panels at once with Xpress Mount™ technology; Reduce labor time and costs with preassembled tilt beams and built-in wire management; Integrated electrical bonding method using serrated nuts and bolts (no WEEBs required) Advantages: Fewer system components and only two standard bolt sizes.

Choosing the right PV structure for your project leads directly to greater efficiency, power output, and ROI. In this post, we outline the three main PV plant structures and share RatedPower analysis of their performance.

IronRidge® BX delivers superior power density and design flexibility to flat roof solar arrays. Made of a glass reinforced composite, the BX Chassis is engineered for extreme structural loading, yet is also shaped to be roof-friendly and easy to install. Watch Video. Glass-Reinforced Composite. How do you calculate a photovoltaic array size?

Calculate the photovoltaic array size by estimating the daily energy demand, factoring system efficiency, and using location-specific solar irradiance data to determine how many solar panels are necessary. Dividing the energy demand by solar panel output can provide the required number of panels for the array.

What are fixed solar panels?

Fixed solar panels provide an efficient and space-saving solution, allowing homeowners to optimize their roof space while generating significant solar energy. In certain architectural applications, fixed solar panels are incorporated into passive solar design principles.

What are the components of a photovoltaic system?

A photovoltaic system consists of various components that work together to convert sunlight into electricity. The main components of a PV system include:
Solar panels: These are the primary component of a PV system and consist of numerous PV cells. Solar panels are responsible for capturing sunlight and converting it into electricity.

How do fixed solar panels work?

These panels are mounted at a fixed tilt and azimuth angle, typically based on the site's latitude and optimal sun exposure. While they do not dynamically adjust like solar trackers, fixed solar panels offer steady and reliable performance for various solar projects.

What are the benefits of fixed solar panels?

Fixed solar panels provide several advantages, making them popular for residential and commercial solar projects. Some of the key benefits include:
Fixed solar panels are generally less expensive and simpler to install than solar tracking systems.

How to design a photovoltaic array?

Designing a photovoltaic array requires considerations such as location, solar irradiance, module efficiency, load demand, orientation, tilt angle, shading, and space constraints. It is crucial to optimize these factors for maximum energy production and cost-effectiveness. 2.

Photovoltaic panel fixed block size

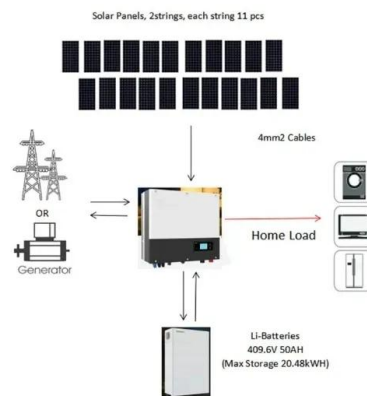


PWM Solar Charge Controller - Working, Sizing and Selection

What is Pulse Width Modulation Or A PWM Charge Controller? A PWM (Pulse Width Modulation) controller is an (electronic) transition between the solar panels and the batteries: The solar ...

Ground-Mount Buyer's Guide 2022: Trackers, fixed tilt

In our annual Ground-Mount Buyer's Guide, we asked manufacturers to tell us what's new in their offering and for any updated specs in their portfolio. What you'll see is the market continues to push tolerances and ...



Critical review on various inverter topologies for PV ...

Fig. 2 shows the block diagram of the grid-connected PV system where a DC-DC converter is responsible for operating at maximum power point (MPP) by embedding an appropriate MPPT algorithm in the MPPT ...

Design and Simulation of a Solar Tracking System for ...

After installing a solar panel system, the

orientation problem arises because of the sun's position variation relative to a collection point throughout the day. It is, therefore, necessary to change the position of the ...



Solar Panel Array Layout: Optimizing Your Solar PV System

8 Case Study: Optimizing Solar Panel Array Layout for Maximum Efficiency. 8.1 Background; 8.2 Project Overview; 8.3 Implementation; 8.4 Results; 8.5 Summary; 9 Expert Insights From Our ...

Tracking Solar Panels vs. Fixed Solar Panels

Fixed solar panels offer reliable performance and cost-effectiveness, making them suitable for projects with ample space and budget constraints. When choosing between solar trackers and fixed panels, consider project size, ...

 **TAX FREE**

ENERGY STORAGE SYSTEM

Product Model
HJ-ESS-215A(100KW/215KWh)
HJ-ESS-115A(50KW 115KWh)

Dimensions
1600*1280*2200mm
1600*1200*2000mm

Rated Battery Capacity
215KWH/115KWH

Battery Cooling Method
Air Cooled/Liquid Cooled



Solar Panel Array Layout: Optimizing Your Solar PV ...

8 Case Study: Optimizing Solar Panel Array Layout for Maximum Efficiency. 8.1 Background; 8.2 Project Overview; 8.3 Implementation; 8.4 Results; 8.5 Summary; 9 Expert Insights From Our Solar Panel Installers About Solar ...



Choosing PV structures: Trackers vs Fixed vs East-West (Case study)

IronRidge® BX delivers superior power density and design flexibility to flat roof solar arrays. Made of a glass reinforced composite, the BX Chassis is engineered for extreme structural loading, ...



Ground Mounted PV Solar Panel Reinforced Concrete ...

A ground mounted solar panel system is a system of solar panels that are mounted on the ground rather than on the Size = 3.0 ft Diameter Height = 4.0 ft Concrete Footing Size = 10.0 ft x ...

59 Solar PV Power Calculations With Examples Provided

46. Solar Panel Life Span Calculation. The lifespan of a solar panel can be calculated based on the degradation rate: $L_s = 1 / D$. Where: L_s = Lifespan of the solar panel (years) D = Degradation rate per year; If your solar panel has a ...



A Comprehensive Guide to Ground Mount Solar Panel ...

Designing your ground-mounted solar panel array involves several important considerations. Paying attention to these factors will ensure optimal performance and efficiency: Sizing the Solar Panel Array. Determining ...

Working on Solar Design and System Sizing (FS-2023 ...

This factsheet will help you estimate the size and number of solar panels needed to meet your electrical demand. Review this factsheet to learn how to assess your electrical loads, identify solar energy levels, and ...

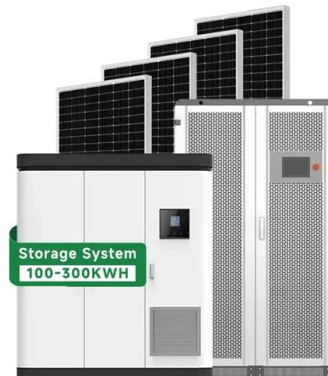


Photovoltaic solar cell technologies: analysing the state of the art

Nearly all types of solar photovoltaic cells and technologies have developed dramatically, especially in the past 5 years. Here, we critically compare the different types of ...

A Full Guide to Photovoltaic Array Design and ...

Calculate the photovoltaic array size by estimating the daily energy demand, factoring system efficiency, and using location-specific solar irradiance data to determine how many solar panels are necessary. Dividing ...



Solar Panel kWh Calculator: kWh Production Per Day, Month, Year

Here you can simply input what size solar panel you have (100W, 200W, 300W, and so on) and how many peak sun hours you get (average is about 5 hours). 190W panels placed in two ...

Contact Us

For catalog requests, pricing, or partnerships, please visit:
<https://www.ssab-proiect.eu>