

European Solar and Energy Storage Solutions

Photovoltaic combiner box measurement line grounding



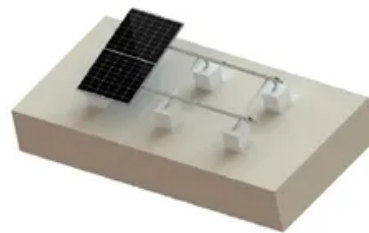
TILE ROOF SOLAR MOUNTING SYATEM



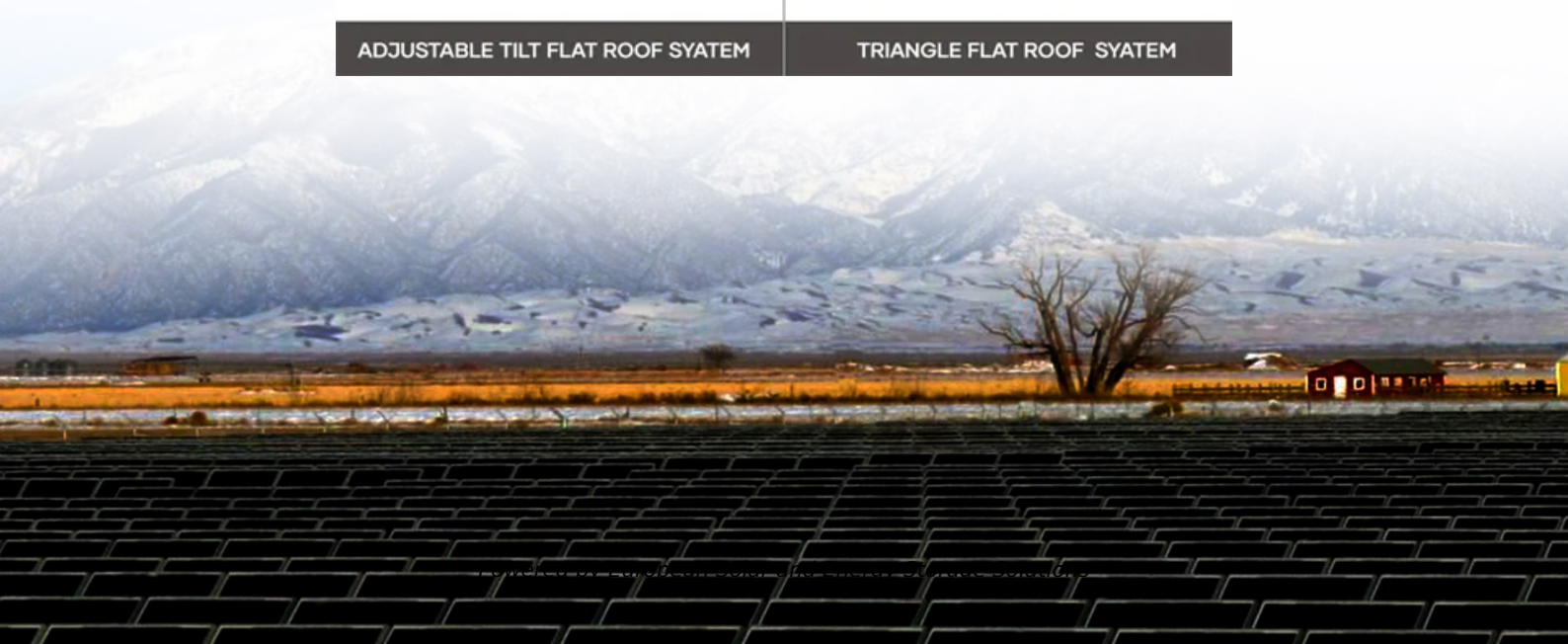
STANDING SEAM ROOF SYATEM



ADJUSTABLE TILT FLAT ROOF SYATEM



TRIANGLE FLAT ROOF SYATEM



Overview

What is a PV combiner box wiring diagram?

Overall, a PV combiner box wiring diagram is a valuable tool in the installation and maintenance of a solar energy system. It provides a clear and systematic guide for wiring connections, fusing, and grounding. Following the diagram will help ensure the safety, efficiency, and long-term performance of your solar panel installation.

Why is a PV combiner box important?

Proper installation and maintenance of the PV combiner box are vital for the efficient and safe operation of a solar power system. By adhering to the technical requirements and installation guidelines, the longevity and performance of the solar system can be significantly enhanced, contributing to a more sustainable and reliable energy solution.

How do I choose a PV combiner box?

Here are some key points to remember: Proper sizing: Ensure that the combiner box is appropriately sized to accommodate the number of PV strings in your system and can handle the maximum current and voltage ratings.

How do you connect a solar inverter to a combiner box?

Open the combiner box cover. Install conduits, as required by local regulations. Maximum supported conduit diameter - 32 mm. Connect the DC cables from the combiner box to the inverter. Connect DC cables from PV strings and batteries (if installed) to the terminal blocks, as shown below. symbol.

Which energy meter is used in a PV AC combiner box?

In case the PV AC combiner box is equipped with an energy meter, this device is a D650. This device simplifies the connection work inside the combiner box and reduces maintenance tasks due to the PUSH IN terminals.

The Transclinic 16i+ can operate at full load (25 Amps) at maximum temperature range (+70 oC).

What is a PV AC combiner box?

PV AC combiner boxes are provided with fuse links in accordance with IEC 60269-6:2010. Each design of PV AC combiner box contains the most suitable fuse rating specially selected for most common string inverters in the market, depending on voltage, ambient temperatures and operation conditions.
Material damage!

Photovoltaic combiner box measurement line grounding



VEVOR PV Combiner Box, 4 String with 15A Rated Current Fuse, ...

Shop VEVOR PV Combiner Box, 4 String with 15A Rated Current Fuse, 63A Circuit Breaker, Lightning Arreste Connector for On/Off Grid Solar Panel System, IP65 at lowest price, 2-day ...

How to find and repair ground faults in solar PV systems

A clear, consistent approach to finding and diagnosing such faults can help you repair them reliably and efficiently whenever they occur. Learn to identify and correct ground faults in solar PV arrays using various tools and methods for ...



Solar Combiner Box: A Beginner's Guide

When selecting the combiner box, quality is perhaps the essential factor to consider, specifically since it is the first equipment attached to the solar module's output. Combiner boxes are quite affordable when ...

What is the process of grounding and bonding a solar ...

...

Appropriate bonding and equipment grounding limits the voltage imposed on a system by lightning, line surges and unintentional contact with higher-voltage lines. It also limits the voltage-to-ground that can occur on ...



Step-by-Step Guide: Wiring Your PV Combiner Box - ...

Grounding: Follow local electrical codes and guidelines for grounding the combiner box and bonding PV modules for safety and protection against electrical faults. Labeling and documentation: Clearly label all wires, terminals, and ...

Guide to Solar Energy Diagrams: From Wiring to System Layouts

Single-line diagrams are simplified illustrations of the electrical connections in a solar power system, showing how electricity flows from the solar panels to the inverter and the main ...



Photovoltaic Module Grounding: Issues and Recommendations

Study Outline. Address gap in requirements and methods for reliable grounding of PV module frame and mounting components. Preliminary "lay-of-the-land" Report (BEW) - Published ...

This is a General Guide for Photovoltaic Plans Submittal

Single Line Diagram: o Show the entire PV system including modules, junction, combiner boxes, wires and conduits and sizes, conductors-type and sizes, inverters, AC/DC disconnects and ...



Guide to Photovoltaic Combiner Box Installation

The grounding of the combiner box should be securely connected, and communication wiring should use IP68 rated cable glands. Proper installation and maintenance of the PV combiner box are vital for the efficient ...

Contact Us

For catalog requests, pricing, or partnerships, please visit:
<https://www.ssab-proiect.eu>