

## European Solar and Energy Storage Solutions

# Optimal working voltage for photovoltaic panels



## Overview

---

In solar photovoltaic (PV) setups, the voltage yield of the PV panels usually ranges between 12 to 24 volts.

In solar photovoltaic (PV) setups, the voltage yield of the PV panels usually ranges between 12 to 24 volts.

Detailed Voltage Recommendations by System Size

1. Small Systems (12V) For small-scale applications like those used in RVs, small cabins, or standalone solar projects, 12V systems often provide sufficient power.
2. Medium Systems (24V) When the power requirement ranges between 1,500W and 5,000W, a 24V system configuration comes into its own.
3. Large Systems (48V).

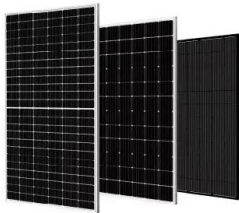
On average, a solar panel can produce between 170 and 350 watts per hour, corresponding to a voltage range of approximately 228.67 volts to 466 volts.

Generally, solar panels intended for residential or commercial installations typically have voltage outputs ranging from 12 volts to 48 volts.

**Maximum Power Voltage:** The voltage at which your panel produces the most power typically falls between 18V to 36V.

## Optimal working voltage for photovoltaic panels

---



### What is the Best Angle for Solar Panels? Maximizing the Efficiency

Using Renogy's adjustable solar panel tilt mount brackets allows you to properly orient the panels at the perfect pitch for your site's solar access and roof, ensuring maximum ...

### Homeowner's Guide to Going Solar , Department of Energy

These tools are great for getting started, but make sure to work with a solar installer for a custom estimate of how much power your solar energy system is likely to generate. For its analyses, ...



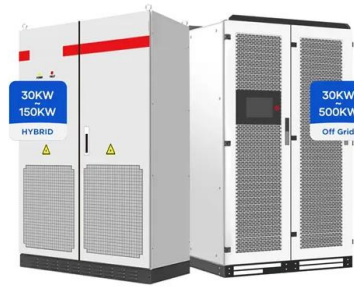
### A Comprehensive Review of Recent Maximum Power ...

To operate photovoltaic (PV) systems efficiently, the maximum available power should always be extracted. However, due to rapidly varying environmental conditions such as irradiation, temperature, and shading, ...

### What's the Best Angle for Solar Panels to Get ...

Factors that affect solar panel angle Latitude. As

we've mentioned earlier, your location's latitude plays a major part in determining the best solar panel angle. Across the continental U.S., the optimal tilt can range ...



## Solar Panel Ratings Explained - Wattage, Current, ...

The Maximum Power Voltage ( $V_{mp}$ ) rating of a solar panel indicates the voltage measured across its terminals when it's operating at its maximum power output ( $P_{max}$ ) under ideal conditions. In other terms, the ...

## 12V, 24V, or 48V Solar Power System: Which Voltage Is Best for ...

Optimizing solar panel voltage involves several factors, including panel orientation, tilt angle, environmental conditions, and system design. Positioning panels to maximize sunlight exposure, adjusting tilt angles ...



## Blocking Diode and Bypass Diode for Solar Panels

It allows the current to flow from the panel to the battery but blocks the flow in opposite direction. It is always installed in series with the solar panel. Bypass diode configuration. Figure 3 shows ...



## Calculate Your Optimal Solar Panel Tilt Angle

Boost your solar panel's efficacy with our comprehensive guide. Calculate the optimal tilt angle based on empirical data, dispel common myths, and understand how location impacts solar energy output. This guide primarily focuses on ...



## Understanding Solar Panel Voltage: A Comprehensive ...

Solar panels are integral to harnessing solar energy, transforming sunlight into electricity through photovoltaic cells. Understanding the voltage output of solar panels is crucial for optimizing their efficiency and ...

## Homeowner's Guide to Going Solar , Department of ...

These tools are great for getting started, but make sure to work with a solar installer for a custom estimate of how much power your solar energy system is likely to generate. For its analyses, NREL uses an average system size of ...





## How to Find the Best Orientation and Angle of Solar ...

The solar panel angle, also known as inclination, refers to the vertical tilt angle between the surface of the solar panel and the ground. As the sun movement varies both geographically and seasonally, you need to adjust ...

## Solar Panel Output Voltage: How Many Volts Do PV Panel ...

36-Cell Solar Panel Output Voltage =  $36 \times 0.58V = 20.88V$ . What is especially confusing, however, is that this 36-cell solar panel will usually have a nominal voltage rating of 12V. ...



## Satellite Solar Panels

Once the solar panels are deployed, the satellite has wings! A satellite can either have one single solar panel or multiple panels, depending on the power need and satellite dimensions. All solar panels combined, including the deployment ...

## Contact Us

For catalog requests, pricing, or partnerships, please visit:  
<https://www.ssab-proiect.eu>