

European Solar and Energy Storage Solutions

Main distribution of solar power stations



Overview

A photovoltaic power station, also known as a solar park, solar farm, or solar power plant, is a large-scale (PV system) designed for the supply of . They are different from most building-mounted and other decentralized because they supply power at the level, rather than to a local user or users. Utility-scale solar i.

Global photovoltaic (PV) installed capacity and power generation are increasingly growing due to climate change mitigation efforts, suggesting the necessity of accurately determining the spatial distribution of PV power stations and scientifically evaluating their carbon reduction benefits.

Global photovoltaic (PV) installed capacity and power generation are increasingly growing due to climate change mitigation efforts, suggesting the necessity of accurately determining the spatial distribution of PV power stations and scientifically evaluating their carbon reduction benefits.

We provide a remote sensing derived dataset for large-scale ground-mounted photovoltaic (PV) power stations in China of 2020, which has high spatial resolution of 10 meters. The dataset is.

Here we provide a global inventory of commercial-, industrial- and utility-scale PV installations (that is, PV generating stations in excess of 10 kilowatts nameplate capacity) by using a .

Renewables 2019 categorises distributed solar PV remuneration schemes into five main categories: 1) buy-all, sell-all; 2) net metering; 3) real-time self-consumption at the wholesale price;.

A photovoltaic power station, also known as a solar park, solar farm, or solar power plant, is a large-scale grid-connected photovoltaic power system (PV system) designed for the supply of merchant power. They are different from most building-mounted and other decentralized solar power because they supply power at the utility level, rather than . Where are photovoltaic power stations used?

In general, photovoltaic power stations have been built in most countries and regions in the world [12, 13]. In Brazil, the off-grid photovoltaic energy

systems were widely used for electrification in remote areas [14, 15]. As for the planning stage, the accuracy of photovoltaic power generation forecast was also conducted [16, 17].

What is the regional distribution of photovoltaic power stations in China?

In general, the regional distribution of photovoltaic power stations in China is quite different, and the regional competition patterns are variable. Provinces with high installed photovoltaic power stations and high regional competition are mainly located in Northwest and North China.

How is the spatial distribution of China's PV power stations mapped?

The spatial distribution of China's PV power stations in 2020 was mapped based on the GEE platform by including the proposed EPVI to provide real-world data support for further scientific evaluation.

What can a 10-m national-scale distribution dataset tell us about China's PV power stations?

Above all, as the first publicly released 10-m national-scale distribution dataset of China's ground-mounted PV power stations, it can provide data references for relevant researchers in fields such as energy, land, remote sensing and environmental sciences.

Where is solar energy most commonly installed?

Sampling from a global land-cover map, we observe that non-residential PV is most commonly installed on croplands, followed by deserts and grasslands. We compare PV solar energy land cover with local and national land-cover distributions to observe the bias in regional and local PV siting decisions.

What percentage of solar power is PV?

As of 2019, about 97% of utility-scale solar power capacity was PV. [1][2] In some countries, the nameplate capacity of photovoltaic power stations is rated in megawatt-peak (MW_p), which refers to the solar array's theoretical maximum DC power output. In other countries, the manufacturer states the surface and the efficiency.

Main distribution of solar power stations



Interactive map of United States energy infrastructure and resources

The Energy Information Administration Energy Mapping System provides an interactive map of U.S. power plants, pipelines and transmission lines, and energy resources. Using the map ...

The Ultimate Guide to Transformer for Solar Power ...

In order to ensure the safety of the long-term operation of solar power stations and reduce the chance of failure of the pad mounted transformer, it is necessary to start from the construction phase of solar power stations, to do a good job ...



GRADE A BATTERY

LiFePO4 battery will not burn when overcharged/over discharged, overcurrent or short circuit and can withstand high temperatures without decomposition.



The Ultimate Guide to Transformer for Solar Power Plant

In order to ensure the safety of the long-term operation of solar power stations and reduce the chance of failure of the pad mounted transformer, it is necessary to start from the construction ...

A Comprehensive Review of Electric Vehicle Charging ...

The main link between the two is the batteries, which power its EV's traction, control, lights, and air conditioning system. E. Integration Analysis of Electric Vehicle Charging Station Equipped with Solar Power Plant ...

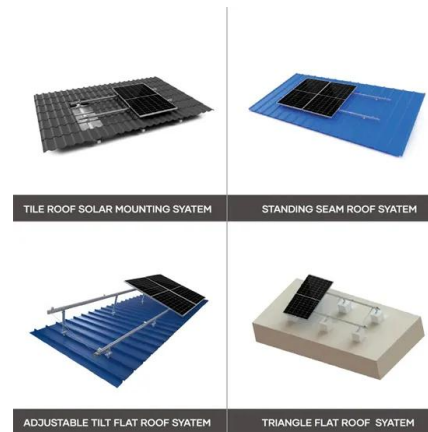


Electrical system of the International Space Station

The power management and distribution subsystem operates at a primary bus voltage set to V_{mp} , the peak power point of the solar arrays. As of 30 December 2005, V_{mp} was 160 volts DC (direct current). It can change over time as the ...

How Many Power Stations Are There In The UK: Open ...

Sunny days in the UK might be a rarity, but solar power stations are a growing feature of the nation's energy portfolio, capitalizing on advancements in solar technology. Hydro Power Stations Riding the wave of ...



Application of distributed solar photovoltaic power generation in

main components are solar cells, power storage batteries, power distribution room, Application of distributed solar photovoltaic power station and building integration ...

Overview of International Space Station Electrical Power

...

ISS Solar Arrays: Overview 5 Solar Array Wing (SAW):
o There are 32,800 solar cells total on the ISS Solar Array Wing, assembled into 164 solar panels.
o Largest ever space array to convert ...



Photovoltaic power station

OverviewHistorySiting and land useTechnologyThe business of developing solar parksEconomics and financeGeographySee also

A photovoltaic power station, also known as a solar park, solar farm, or solar power plant, is a large-scale grid-connected photovoltaic power system (PV system) designed for the supply of merchant power. They are different from most building-mounted and other decentralized solar power because they supply power at the utility level, rather than to a local user or users. Utility-scale solar i...

Contact Us

For catalog requests, pricing, or partnerships, please visit:
<https://www.ssab-proiect.eu>