

## European Solar and Energy Storage Solutions

# Lithium battery energy storage station

**LPR Series 19'  
Rack Mounted**



## Overview

---

A battery energy storage system (BESS) or battery storage power station is a type of energy storage technology that uses a group of batteries to store electrical energy. Battery storage is the fastest responding dispatchable source of power on electric grids, and it is used to stabilise those grids, as battery storage can.

Battery storage power plants and (UPS) are comparable in technology and function. However, battery storage power plants are larger. For safety and security.

Since they do not have any mechanical parts, battery storage power plants offer extremely short control times and start times, as little as 10 ms. They can therefore help dampen the fast oscillations that occur when electrical power networks are operated close to.

- .

Most of the BESS systems are composed of securely sealed , which are electronically monitored and replaced once their performance falls below a given threshold. Batteries suffer from cycle ageing, or deterioration caused by charge-discharge cycles. This.

While the market for grid batteries is small compared to the other major form of grid storage, pumped hydroelectricity, it is growing very fast. For example, in the United States, the market for storage power plants in 2015 increased by 243% compared to 2014. The.

Are lithium-ion batteries a good energy storage solution?

There are different energy storage solutions available today, but lithium-ion batteries are currently the technology of choice due to their cost-effectiveness and high efficiency. Battery Energy Storage Systems, or BESS, are rechargeable batteries that can store energy from different sources and discharge it when needed.

How can lithium-ion battery technology be used in grid energy storage?

Recognition algorithms of the venting acoustic signal is constructed and achieves high accuracy. Lithium-ion battery technology has been widely used in grid energy storage for supporting renewable energy consumption and smart grids.

What is battery energy storage?

Battery energy storage (BESS) offer highly efficient and cost-effective energy storage solutions. BESS can be used to balance the electric grid, provide backup power and improve grid stability.

What is a battery energy storage system (BESS)?

A battery energy storage system (BESS) or battery storage power station is a type of energy storage technology that uses a group of batteries to store electrical energy.

What is lithium ion battery technology?

Lithium-ion battery technology has been widely used in grid energy storage for supporting renewable energy consumption and smart grids. Safety accidents related to fires and explosions caused by LIB thermal runaway frequently occur, seriously threatening human safety and hindering further applications.

Why are lithium-ion batteries used in battery storage plants?

Since 2010, more and more utility-scale battery storage plants rely on lithium-ion batteries, as a result of the fast decrease in the cost of this technology, caused by the electric automotive industry. Lithium-ion batteries are mainly used.

## Lithium battery energy storage station

### Reducing power substation outages by using battery ...



3. Lithium-ion (Li-ion) These batteries are composed from lithium metal or lithium compounds as an anode. They comprise of advantageous traits such as being lightweight, safety, abundance and affordable material of ...

### Huge Texas battery energy storage facility begins ...

300 MWh is perhaps big or even 'huge' for a battery storage but not generally for storing energy. 300 MWh is about the energy that a typical nuclear power plant delivers in 20 minutes. A modern pumped hydro storage, ...



### Multidimensional fire propagation of lithium-ion phosphate batteries ...

In actual energy storage station scenarios, battery modules are stacked layer by layer on the battery racks. Once a thermal runaway (TR) it was found that the thermal ...



### Large-scale energy storage system: safety and risk ...

Lithium metal batteries use metallic lithium as

the anode instead of lithium metal oxide, and titanium disulfide as the cathode. Due to the vulnerability to formation of dendrites at the anode, which can lead to the ...



Test certification  
CE FC



## Utility-Scale Battery Storage , Electricity , 2024 , ATB

The 2024 ATB represents cost and performance for battery storage with durations of 2, 4, 6, 8, and 10 hours. It represents lithium-ion batteries (LIBs)--primarily those with nickel manganese ...

## Research on Key Technologies of Large-Scale Lithium Battery

...

Combined with the battery technology in the current market, the design key points of large-scale energy storage power stations are proposed from the topology of the energy storage system, ...



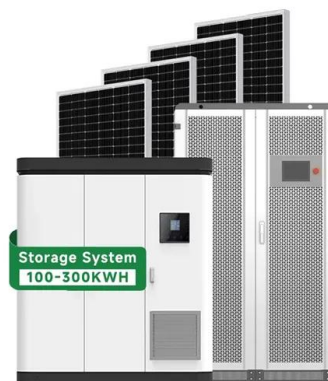
## Home Battery Backup , LiT Home Energy Storage Station , 800 ...

A Lithium ion home battery backup system the LiT Home Energy Storage Station is considered to be the best option for storing the energy of the sun, wind, or any form of power generation. ...



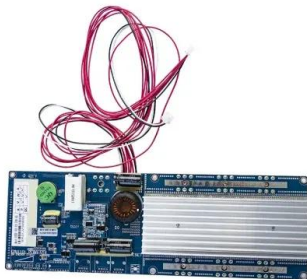
## Explosion hazards study of grid-scale lithium-ion battery energy

Request PDF , Explosion hazards study of grid-scale lithium-ion battery energy storage station , Lithium-ion battery is widely used in the field of energy storage currently. ...



## Integration and energy management of large-scale lithium-ion battery ...

The battery energy storage system can provide flexible energy management solutions that can improve the power quality of renewable-energy hybrid power generation systems. This paper ...



## Research on early warning system of lithium ion battery energy storage

Abstract: It is very important for the safe operation of the energy storage system to study the fire warning technology of Li-ion battery energy storage power station. The recognition of thermal ...



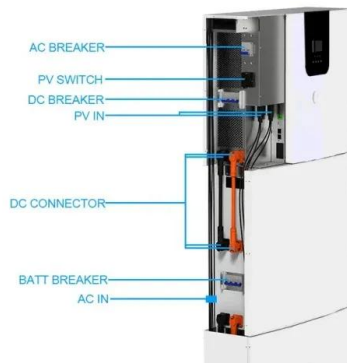
## Utility-Scale Battery Storage , Electricity , 2022 , ATB



The 2022 ATB represents cost and performance for battery storage across a range of durations (2-10 hours). It represents lithium-ion batteries (LIBs)--focused primarily on nickel manganese cobalt (NMC) and lithium iron ...

## Battery Energy Storage System (BESS) , The Ultimate ...

A battery energy storage system (BESS) captures energy from renewable and non-renewable sources and stores it in rechargeable batteries (storage devices) for later use. A battery is a Direct Current (DC) device and when needed, the ...



## Fault diagnosis technology overview for lithium-ion battery energy

With an increasing number of lithium-ion battery (LIB) energy storage station being built globally, safety accidents occur frequently. Diagnosing faults accurately and quickly ...

## Contact Us

For catalog requests, pricing, or partnerships, please visit:  
<https://www.ssab-proiect.eu>