

European Solar and Energy Storage Solutions

Lebanon hubble am 4 lithium ion battery



Overview

What kind of battery does a Hubble AM4 use?

Enjoy uninterrupted power with The Hubble AM-4 2.75kWh Lithium-Ion Battery - (25V) Long-Lasting Power: With a robust 2.75kWh capacity, you'll enjoy extended runtimes for all your electronic devices and appliances. Perfect for smaller 24V system.

What is a Hubble lithium AM2 battery?

Introducing the Hubble Lithium AM2 5.5kWh 51V Battery - the embodiment of power, reliability, and sustainability for your residential energy needs. Engineered to perfection, this low-voltage lithium battery is your key to unlocking a world of possibilities in off-grid living, backup energy solutions, and self-consumption systems. Key Features:.

What type of battery does the AM-4 use?

The AM-4 is a 25.5V Lithium battery produced to cater to the 24V market. With 3kWh of capacity and the ability to integrate with the Cloudlink remote monitoring device.

How do Hubble batteries communicate with inverters?

Hubble's range of Lithium batteries communicates with a wide range of inverters through CAN bus (please see list below). The AM Series stands for Any Mount. This gives installers more flexibility to either rack mount in a standard server cabinet or wall mounts the batteries.

Lebanon hubble am 4 lithium ion battery



HUBBLE AM-4

HUBBLE AM-4 Nominal voltage - 25V Nominal Capacity - 110Ah Length (mm) - 375 Width (mm) - 147 Height (mm) - 371 Typical Weight (kg) - 21 Internal Fire Suppression System: Yes CAN Bus: Yes Hubble Cloud link Ready: Yes Spec Sheet Installation manual Lithium Ion. Freedom Won; Battery Types. AGM Batteries; Deep Cycle Batteries; Dry Cell

Hubble AM-4

Hubble AM-4 - 2.6KW 51V Lithium Battery Advanced BMS with current limiting function CAN Bus, fully integrates and communicates with leading Inverter brands Excellent high temperature performance High Cycle Life and Service Life Hubble Cloudlin Cells: New Li-ion Prismatic Cells. Design Life: +/- 15 Years. Warranty: 5 year. Cycle Life @ 1C



Hubble Lithium Battery Wall Mount 25V 2.75kWh 110Ah AM-4

Hubble Lithium Battery Wall Mount 25V 2.75kWh 110Ah AM-4. The Hubble Battery AM-4 is a 25.5V Lithium battery we are producing to cater for the 24V inverter market. The AM-4 is the perfect fit for 24V inverters where you still have the need to install lithium. Low self discharge o High cycle and service Life o 1C High performance lithium battery

Hubble AM4 25V 2.75KWh Lithium Ion Battery (25V)

The AM-4 is a 25.5V Lithium battery we are producing to cater for the 24V inverter market. The AM-4 is the perfect fit for 24V inverters where you still have the need to install lithium. Specification: 25.5V 2.75KWh Rating: 1C Parallel: up ...



Hubble AM-4 25.5V 2.7kWh Lithium Battery

The AM-4 is the perfect fit for 24V inverters where you still have the need to install lithium. Hubble's range of Lithium batteries communicates with a wide range of inverters through CAN bus (please see list below). The AM Series stands for Any Mount. This gives installers more flexibility to either rack mount in a standard server cabinet or

Hubble Lithium Battery Wall Mount 51.2V 5.12kWh 100Ah AM-5

Hubble Lithium Battery Wall Mount 51.2V 5.12kWh 100Ah AM-5. Low self discharge or High cycle and service Life Hubble Lithium Wall Mount Battery 10kW AM-10. R 55,000.00 (incl. VAT) View Product Details; Add to Cart. T0004127. Weidmuller Combiner Box with Dual MPPT. R ...



Hubble AM-4

Hubble AM-4 - 2.6KW 51V Lithium Battery. Advanced BMS with current limiting function; CAN Bus, fully integrates and communicates with leading Inverter brands; Excellent high temperature performance; High Cycle Life and



Service Life; Hubble Cloudlink integration ready for cloud monitoring; 1C High Performance Lithium battery

AM-4 Hubble Battery , Lithium Home Battery Storage

1C High performance lithium battery. Easy wall mount or shelf rack installation. Excellent high temperature performance. Advanced BMS with current limiting function. Compatible with most inverters and chargers. High energy density ...



Hubble AM Series Batteries , AM-2 , AM-5 , AM-4 , AM ...

This any mount series of lithium batteries range from 2.75kWh - 10kWh and are designed with industry leading first life prismatic lithium cells. Easily wall mounted or shelf installed in a standard rack.

Hubble AM-4 25.5V 2.7kWh Lithium Battery

The AM-4 is a 25.5V Lithium battery we are producing to cater for the 24V inverter market. The AM-4 is the perfect fit for 24V inverters where you still have the need to install lithium Hubble AM-2 5.5kWh Lithium Ion Battery. SKU: Hubble-AM2v2 In stock. Compare. Quick view. Add to wishlist. Apium: 14.33kW Lithium Battery



Wallmount. In stock



Which is better LifePO4 or Lithium-ion battery?

The LiFePO4 battery has the edge over lithium-ion, both in terms of cycle life (lasts 4 - 5 times longer), as well as safety. This is a key advantage because lithium-ion batteries can overheat and even catch fire, while LiFePO4 does not. Pri

Hubble AM2 51V 5.5kW Lithium Li-Ion Battery (includes DC battery ...

Hubble AM2 51V 5.5kW Lithium Li-Ion Battery (includes DC battery cabling and wall mountable) - REVISION 2 for sale online at the Best Prices! Door to Door and Overnight Delivery. FREE Shipping - Model: Hubble AM-2 REV 2 - Rated Capacity (5HR): 116 Ah - ...



AM-2 Hubble Lithium Battery

The AM-2 is our new 5.5KWh 51Volt Lithium pack designed to be easily wall-mounted or shelf installed in a standard rack. Specifications: 51V 5.5KWh Rating: 1C Parallel: up to 15 units per string Extras: Battery Link & DC cables included Internal Fire Suppression System: Yes CAN Bus: Yes Hubble Cloudlink Ready: Yes DATA SHEET Please [...]

AM-10 Hubble Battery , 10kWh Hubble Lithium Battery

Prismatic lithium-ion cells make the AM-10 an

great addition to the AM series! Featuring a whopping 10kWh system capacity as well as monitoring via Cloudlink. 1C High performance lithium battery. Advanced BMS with current limiting function. UNLIMITED CYCLES WITHIN THE HUBBLE LITHIUM 10 YEAR WARRANTY. (Ts & Cs Apply) Certification: CE



Hubble AM-4 5.2.7kWh 25.5V LiFePO4 Lithium-ion ...

The Hubble Lithium AM4 2.7kWh 25.5V Battery represents a reliable, efficient, and scalable energy storage solution for various residential applications. Its advanced features, including Hubble Cloudlink integration, high-performance ...

Hubble AM5 Battery

Hubble AM5 Battery - 51.2V 5.12KWh Lithium Batteries The AM-5 is the first of its series to have LFP prismatic cells, featuring a 5.12kWh, 51V system capacity as well as monitoring capabilities via the Hubble Cloudlink. Rating: 1C. Hubble ...



HUBBLE AM-4 Lithium-Ion Battery Instruction Manual

Hubble Lithium AM-4 Battery Warranty Introduction This warranty covers the Hubble Lithium AM-4 25V 2.75KW wall mount lithium series of batteries the Battery . The Battery is designed for and intended to have a 15 year life span.

Hubble AM4

The AM-4 is a 25.5V Lithium battery we are producing to cater for the 24V inverter market. The AM-4 is the perfect fit for 24V inverters where you still have the need to install lithium. Specification: 25.5V 2.6KWh Rating: 1C Parallel: up to 15 units per string Extras: Battery Link & DC cables included Internal Fire Suppression System: Yes [...]



Hubble AM Series Batteries , AM-2 , AM-5 , AM-4 , AM-10

This any mount series of lithium batteries range from 2.75kWh - 10kWh and are designed with industry leading first life prismatic lithium cells. Easily wall mounted or shelf installed in a standard rack.

AM-5 Hubble Battery , LFP Prismatic , Hubble ...

Ports: CAN-bus, Battery Link Ports. Cells: Prismatic LiFePO4. Design Life: \pm 15 Years. Cycle Life: UNLIMITED CYCLES WITHIN THE HUBBLE LITHIUM 10 YEAR WARRANTY. (Ts & Cs Apply) Certification: CE IEC UN38.3. Outer ...



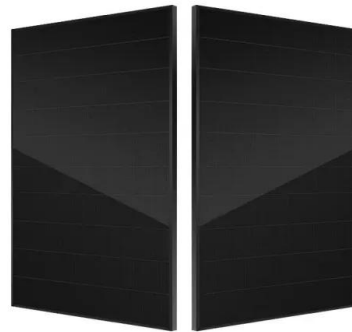
Hubble AM-4 25.5V 2.7kWh Lithium Battery

The AM-4 is the perfect fit for 24V inverters where you still have the need to install lithium. Hubble's range of Lithium batteries communicates with a wide range of inverters through CAN bus (please see list below). The AM Series stands for ...



Hubble AM-4 2.6kWh 24V Lithium Battery

1C High-Performance Lithium battery: The battery supports high discharge and charge rates, providing efficient power delivery when needed. High Energy Density and Conversion Efficiency: The battery offers a high energy density and conversion efficiency, maximizing the available power and optimizing energy storage.



AM-4 Hubble Battery , Lithium Home Battery Storage

1C High performance lithium battery. Easy wall mount or shelf rack installation. Excellent high temperature performance. Advanced BMS with current limiting function. Compatible with most inverters and chargers. High energy density and conversion efficiency. Complete with integrated Battery Management System



Hubble Lithium Battery Wall Mount 25V 2.75kWh ...

Hubble Lithium Battery Wall Mount 25V 2.75kWh 110Ah AM-4. The Hubble Battery AM-4 is a 25.5V Lithium battery we are producing to cater for the 24V inverter market. The AM-4 is the perfect fit

for 24V inverters where you still ...



Hubble AM Series Batteries , AM-2 , AM-5 , AM-4 , AM-10

This any mount series of lithium batteries range from 2.75kWh - 10kWh and are designed with industry leading first life prismatic lithium cells. Easily wall mounted or shelf installed in a standard rack.

Hubble 5.5KWh Lithium AM-2

Hubble 5.5KWh Lithium AM-2. ? JHB: 010 005 5269 , CPT: 021 003 9690 Lithium Ion Battery Advantages; Understanding the Distribution Board (DB) in South African Homes; Solar PV Info . MPPT Charge controllers vs PWM Charge controllers; Pylontech Battery Sizing Considerations;



Hubble AM-4 5.2.7kWh 25.5V LiFePO4 Lithium-ion Battery

The Hubble Lithium AM4 2.7kWh 25.5V Battery represents a reliable, efficient, and scalable energy storage solution for various residential applications. Its advanced features, including Hubble Cloudlink integration, high-performance lithium technology, and conversion efficiency, make it a top choice for those seeking a robust

power solution.

Contact Us

For catalog requests, pricing, or partnerships, please visit:
<https://www.ssab-proiect.eu>