

European Solar and Energy Storage Solutions

Krinner solar South Georgia and South Sandwich Islands

Home Energy Storage (Stackble system)



High Efficiency



Easy installation



Safe and Reliable



Perfect
Compatibility

Product Introduction

- Scalable from 10 kWh to 50 kWh
- Self-Consumption Optimization
- Integrated with inverter to avoid the compatibility problem

- LFP battery, safest and long cycle life
- Stackable design, effortlessly installation
- Capable of High-Powered
- Emergency-Backup and Off-Grid Function

Overview

South Georgia and the South Sandwich Islands (SGSSI) is a remote and inhospitable collection of islands, consisting of a main island and a chain of smaller islands known as the South Sandwich Islands. South Georgia is 165 kilometres (103 mi) long and 35 kilometres (22 mi) wide and is by far the largest island in the territory. The territory has a population of 700 people and 311 buildings.

South Georgia and the South Sandwich Islands (SGSSI) is a territory in the southern Atlantic Ocean. It is a remote and inhospitable collection of islands, consisting of a main island and a chain of smaller islands known as the South Sandwich Islands. South Georgia is 165 kilometres (103 mi) long and 35 kilometres (22 mi) wide and is by far the largest island in the territory. The territory has a population of 700 people and 311 buildings.

Who owns South Georgia and the South Sandwich Islands?

The United Kingdom claimed sovereignty over South Georgia in 1775 and the South Sandwich Islands in 1908. The territory of "South Georgia and the South Sandwich Islands" was formed in 1985; previously, it had been governed as part of the Falkland Islands Dependencies.

What is the ccTLD for South Georgia and the South Sandwich Islands?

The Internet country code top-level domain (ccTLD) for South Georgia and the South Sandwich Islands is .gs. The parts of the islands that are not permanently covered in snow or ice are part of the Scotia Sea Islands tundra ecoregion.

Are South Georgia and the South Sandwich Islands mountainous?

South Georgia and the South Sandwich Islands are a collection of islands in the South Atlantic Ocean. Most of the islands, rising steeply from the sea, are rugged and mountainous. At higher elevations, the islands are permanently covered with ice and snow.

What happened to South Georgia and the South Sandwich Islands?

In 1985, South Georgia and the South Sandwich Islands ceased to be administered as a Falkland Islands Dependency and became a separate territory. The King Edward Point base, which had become a small military garrison after the Falklands War, returned to civilian use in 2001 and is now

operated by the British Antarctic Survey.

Krinner solar South Georgia and South Sandwich Islands

????????????

????????????(??: South Georgia and the South Sandwich Islands,?? SGSSI)????????????????
????????????????????,???????????????????? ?????????????

...



South Georgia and the South Sandwich Islands

British overseas territory in the Southern Atlantic Ocean. This page was last edited on 27 November 2024, at 11:44. All structured data from the main, Property, Lexeme, and EntitySchema namespaces is available under the Creative Commons CC0 License; text in the other namespaces is available under the Creative Commons Attribution-ShareAlike License; ...



South Georgia and the South Sandwich Islands

South Georgia and the South Sandwich Islands. Published: September 2018. Citation: UNEP-WCMC. 2018, A review of terrestrial protected areas: South Georgia and the South Sandwich Islands. Cambridge, UK. The UN Environment World Conservation Monitoring Centre (UNEP-WCMC) is the specialist biodiversity assessment centre of



Intersolar Award 2018 for Krinner Solar

Krinner Solar, Germany, got the award for a new installation process for PV systems using integrated hardware and software tools for the design and planning of large scale PV plants. The innovative solution was chosen as an important step towards the digitalization of the energy provided by solar.



South Georgia and the South Sandwich Islands

South Georgia and South Sandwich Islands are to become a Terrestrial Protected Area which would further protect the most diverse populations of seabirds and marine mammals on Earth, including 25% of the world's gentoo penguins. [r/UpliftingNews](#). [r/UpliftingNews](#).

South Georgia, Antarctica & South Sandwich Islands ...

On this epic voyage, not only will you explore the famed white continent, discover the Falklands~Malvinas, encounter the wildlife haven in South Georgia, you will also sail to the South Sandwich Islands, a chain of seldom-visited volcanic ...



South Georgia and South Sandwich Islands , SpringerLink

HISTORY. South Georgia was probably first sighted by a London merchant, Antonio de la Roche, and then in 1756 by a Spanish Captain, Gregorie Jerez. The first landing and exploration was undertaken by Captain James Cook, who

formally took possession in the name of



Marine Protected Area - Government of South Georgia & the South ...

The South Georgia and South Sandwich Islands Marine Protected Area (SGSSI-MPA) is one of the world's largest MPAs, covering an area of 1.24 million km² (an area 5 x larger than the UK). It was established in 2012 with the aim of conserving the rich marine biodiversity within the Territory's maritime zone and provides a framework for our



Fisheries Overview - Government of South Georgia & the South Sandwich

Krill at South Georgia & the South Sandwich Islands are not self-sustaining but dependent on the northerly movement of krill in the currents of the Southern Ocean from their spawning grounds under the ice in the Antarctic Peninsula and Weddell Sea. Krill reproduction is highly dependent on sea ice conditions and hence environmental factors.

Airports near South Georgia and the South Sandwich Islands

Frequently asked questions. Want to know about travelling to South Georgia and the South Sandwich Islands? We have put together a list of the most frequently asked questions from our users such as: What is the cheapest mode of transport?, What is the quickest option?, How much do tickets usually cost? and many more.



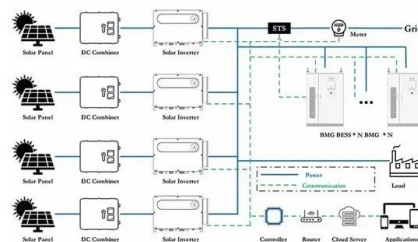
South Georgia and the South Sandwich Islands

OverviewHistoryLanguagesGeographyClimateGovernmentEconomyEcology

South Georgia and the South Sandwich Islands (SGSSI) is a British Overseas Territory in the southern Atlantic Ocean. It is a remote and inhospitable collection of islands, consisting of South Georgia and a chain of smaller islands known as the South Sandwich Islands. South Georgia is 165 kilometres (103 mi) long and 35 kilometres (22 mi) wide and is by far the largest island in the territory. The ...

?????????????

????????????(?: South Georgia and the South Sandwich Islands,??? SGSSI)????????????????????
????????????????????????????,?? ????? ? ????? ?



Geology of South Georgia and the South Sandwich Islands

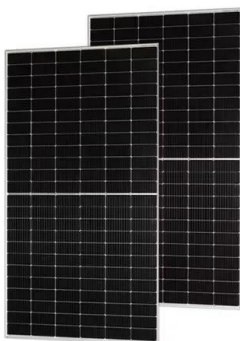
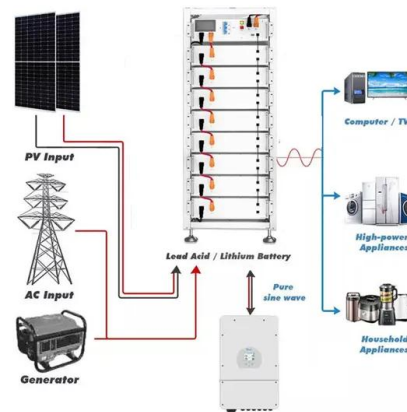
The geology of South Georgia and the South



Sandwich Islands is part of the largely submerged Scotia Ridge. The island of South Georgia is unusual among oceanic islands for having pre-Cretaceous sedimentary rocks underlying much of the island and a ...

Job Vacancies - Government of South Georgia & the South Sandwich Islands

Government of South Georgia & the South Sandwich Islands. NEWS. Latest News; Newsletter Archive; VISITORS. How to Visit; Visitor Policy & Risk Awareness; Stanley, Falkland Islands, South Atlantic, Tel: +500 28200 Fax: +500 28201 Contact Us: here. Links. Sitemap About SGSSI SG Newsletter Visit South Georgia



Solar systems - Krinner ground screws

KRINNER ground screws are an economical and sustainable solution for the installation of elevated solar systems. KRINNER itself was successfully active as a provider of solar systems for many years and offered a complete system consisting of project planning, production of the screw foundations and solar tables and their assembly.

South Georgia and the South Sandwich Islands

South Georgia and the South Sandwich Islands (SGSSI) is a British Overseas Territory in the

southern Atlantic Ocean. It is a remote and inhospitable collection of islands, consisting of South Georgia and a chain of smaller islands known as the South Sandwich Islands. South Georgia is 165 kilometres (103 mi) long and 35 kilometres (22 mi) wide



South Georgia and the South Sandwich Islands: Marine P

The future marine protection of South Georgia and the South Sandwich Islands has been a long-standing campaign for the APPG and our associate members, including the Pew Trusts, and featured in our recent "Keeping 1.5 alive" report, which sets out nine priorities for the forthcoming COP28 summit, which begins next week.

??????????????

????????????????

????????????(??:South Georgia and the South Sandwich Islands,??SGSSI)????????????????????
????????????????,????????????????????????????????,????
?????,????3592?????
????????????????????700??,311????????,?????????????
...



????????????????

????????????(South Georgia and South Sandwich Islands)????????????????????????????????????,????1982????????????



South Georgia, Antarctica & South Sandwich Islands Cruise

On this epic voyage, not only will you explore the famed white continent, discover the Falklands~Malvinas, encounter the wildlife haven in South Georgia, you will also sail to the South Sandwich Islands, a chain of seldom-visited volcanic islands located 740 km (460 miles) south-east of South Georgia.



Krinner Solar

Solar-Carports sind die perfekte Verbindung aus Stellplatzüberdachung und Energiegewinnung. Die sichere Verankerung mit Krinner Schraubfundamenten erfolgt in kürzester Zeit und ein späterer Rückbau ist unkompliziert durchführbar.

SOUTH GEORGIA AND THE SOUTH SANDWICH ISLANDS: ...

The South Sandwich Islands, actively volcanic, consist of a 390-km-long chain of 11 main islands. Fisheries in the South Georgia Maritime Zone are managed using an ecosystem approach aiming to conserve the marine environment.



January Weather in Grytviken South Georgia & South Sandwich Islands

January Weather in Grytviken South Georgia & South Sandwich Islands. Daily high temperatures are around 39°F, rarely falling below 35°F or exceeding 42°F.. Daily low temperatures are around 35°F, rarely falling below 32°F or exceeding 38°F.. For reference, on February 24, the hottest day of the year, temperatures in Grytviken typically range from 36°F to 40°F, while on July 23, the

South Georgia and The South Sandwich Islands

South Georgia and The South Sandwich Islands : Stamps : Years List : Colnect. Buy, sell, trade and exchange collectibles easily with Colnect collectors community. Only Colnect automatically matches collectibles you want with collectibles collectors offer for sale or swap. Colnect collectors club revolutionizes your collecting experience!



??????

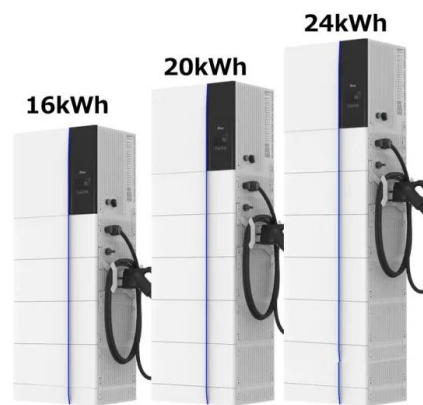
?????(?:South Georgia and The South Sandwich Islands,?:SGSSI),????????????,????????????

56°18'59"30"26°-28'30"???,???????



South Georgia and South Sandwich Islands Quiz

Can you complete the fact file for the South Georgia and South Sandwich Islands? By Manicgamer04. 3m. 10 Questions. 40 Plays 40 Plays 40 Plays. Comments. Comments. Give Quiz Kudos. Give Quiz Kudos-- Ratings. PLAY QUIZ Score. Numerical. Percentage. 0/10. Timer. Default Timer. Practice Mode. Quiz is untimed.



Contact Us

For catalog requests, pricing, or partnerships, please visit:
<https://www.ssab-proiect.eu>